

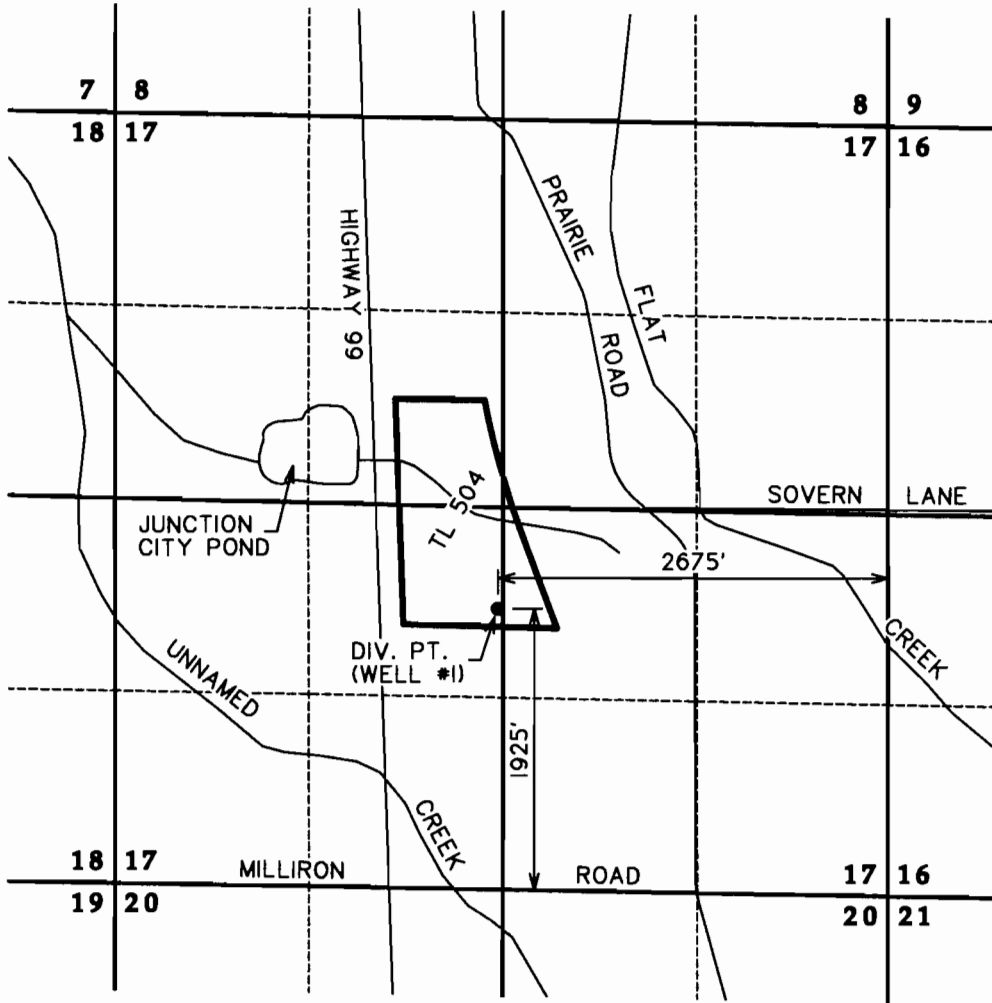
GROUND WATER PERMIT APPLICATION FOR LANE FOREST PRODUCTS, INC. T 16 S, R 4 W, W.M.

DIVERSION POINT
1,925' NORTH & 2,675' WEST
OF THE SOUTHEAST CORNER
OF SECT. 17, T16S, R4W, W.M.

PLACE OF USE (TL 504)
SECTION 17
NE 1/4, SW 1/4.....13.06 AC
NW 1/4, SE 1/4.....4.06 AC
SE 1/4, NW 1/4.....11.27 AC
SW 1/4, NE 1/4.....0.15 AC



SCALE: 1" = 1,320'



RECEIVED

OCT 21 2009

WATER RESOURCES DEPT
SALEM, OREGON

POAGE ENGINEERING AND SURVEYING, INC.
P.O. BOX 2527 EUGENE, OREGON 97402
(541) 485-4505 3118water right app.gxd DWN. BY: DPS
DRAWN: OCTOBER 8, 2009