

SECTION 13 T35S R2W W M

SCALE 1"=400'

35 2W 12

WORK COPY

PROPOSED WELL LOCATION
1040 FT SOUTH AND 1960 FT WEST
NE CORNER SEC 13 T35S R2W

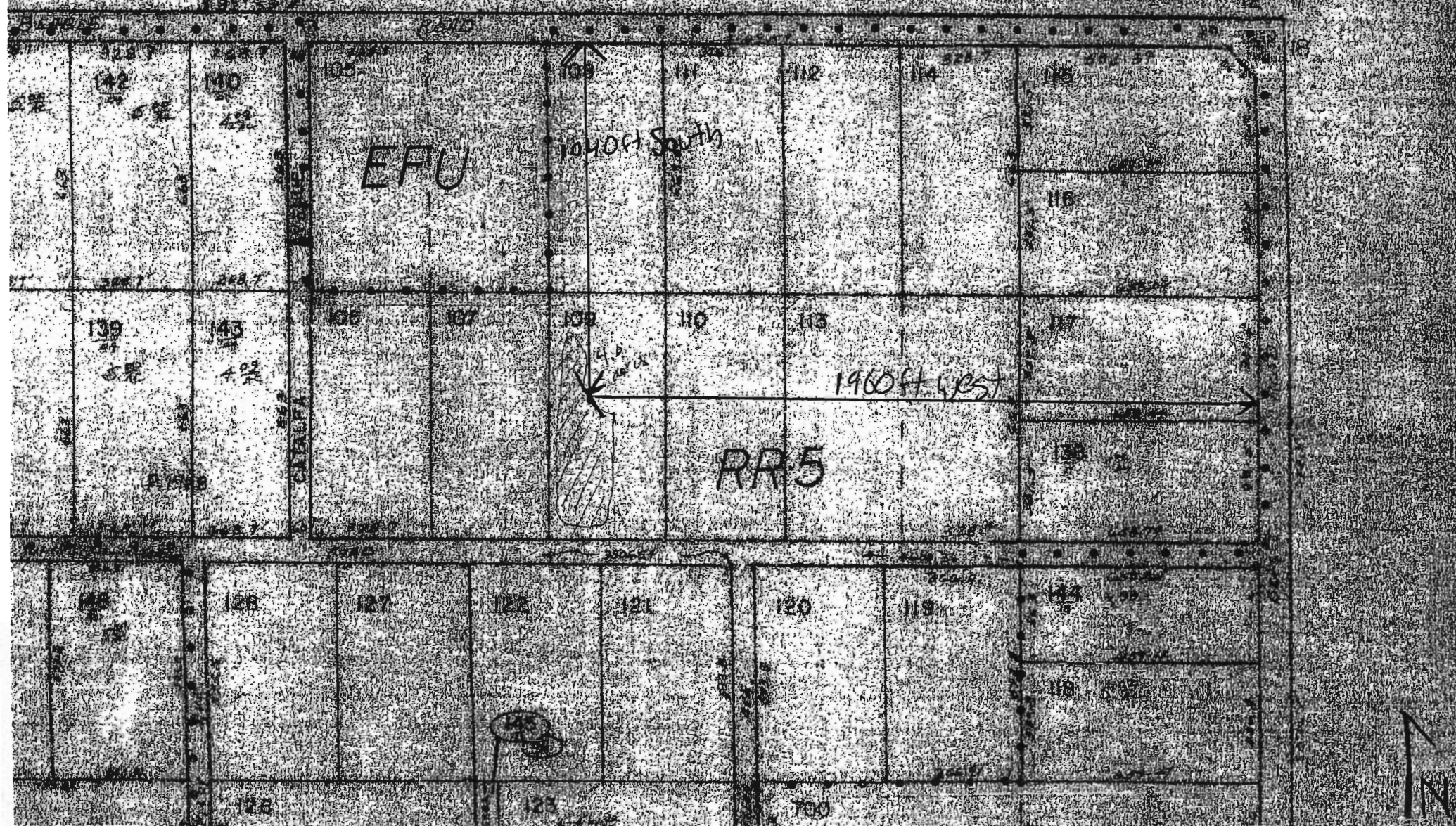
RECEIVED

MAY 18 2009

WATER RESOURCES DEPT
SALEM, OR

35 2W 13

App G-17216



SECTION 13 T35S R2W W M

SCALE 1"=400'

35 2W 12

PROPOSED WELL LOCATION
1040 FT. SOUTH AND 1960 FT. WEST
NE CORNER SEC 13 T35S R2W

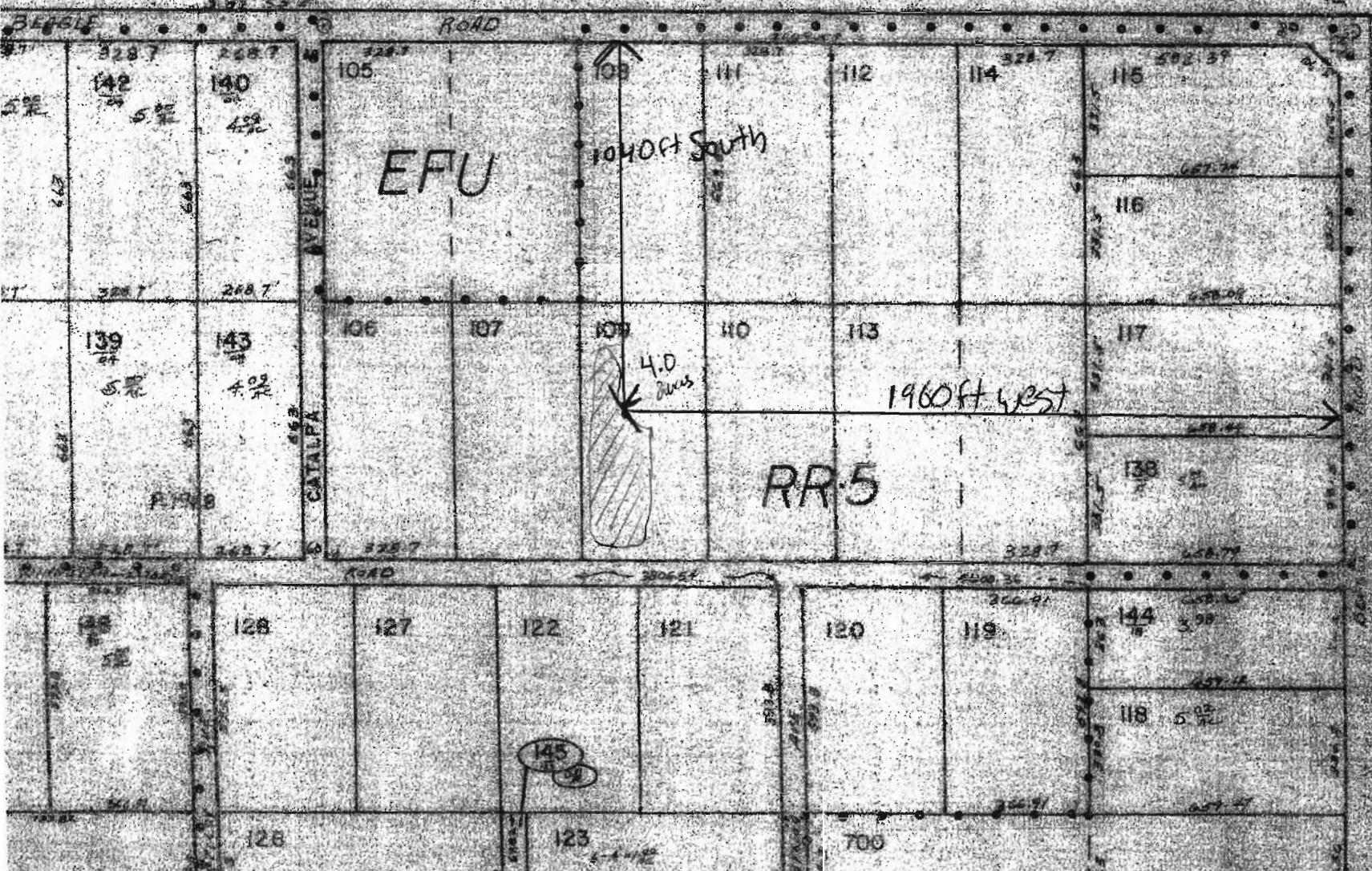
RECEIVED

MAY 06 2009

WATER RESOURCES DEPT
SALEM, OREGON

35 2W 13

Appl. G-17215

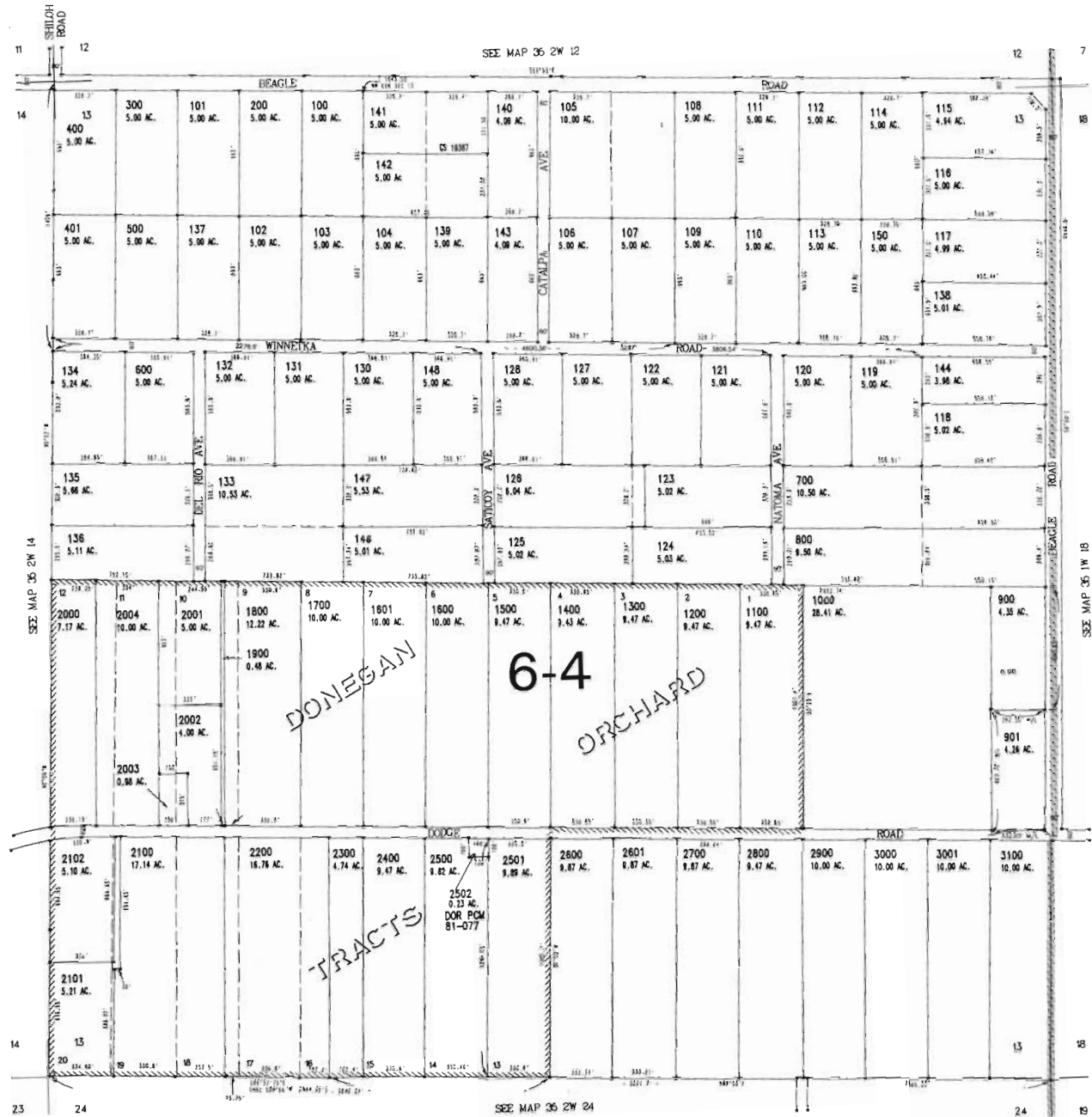


12 7
18

SECTION 13 T.35S. R.2W. W.M.
JACKSON COUNTY

1" = 400'

THIS MAP WAS PREPARED FOR
ASSESSMENT PURPOSE ONLY



Appl. 6-19-15

METAFLE C:\WORKSPACE\352W13 PLAT.GRA
CREATED TUESDAY JANUARY 09, 2007 11:52 AM BY: HENSOLSH