

THIS MAP WAS PREPARED FOR ASSESSMENT PURPOSE ONLY

SECTION 4 T.2S. R.44E. W.M.
WALLOWA COUNTY
1" = 400'

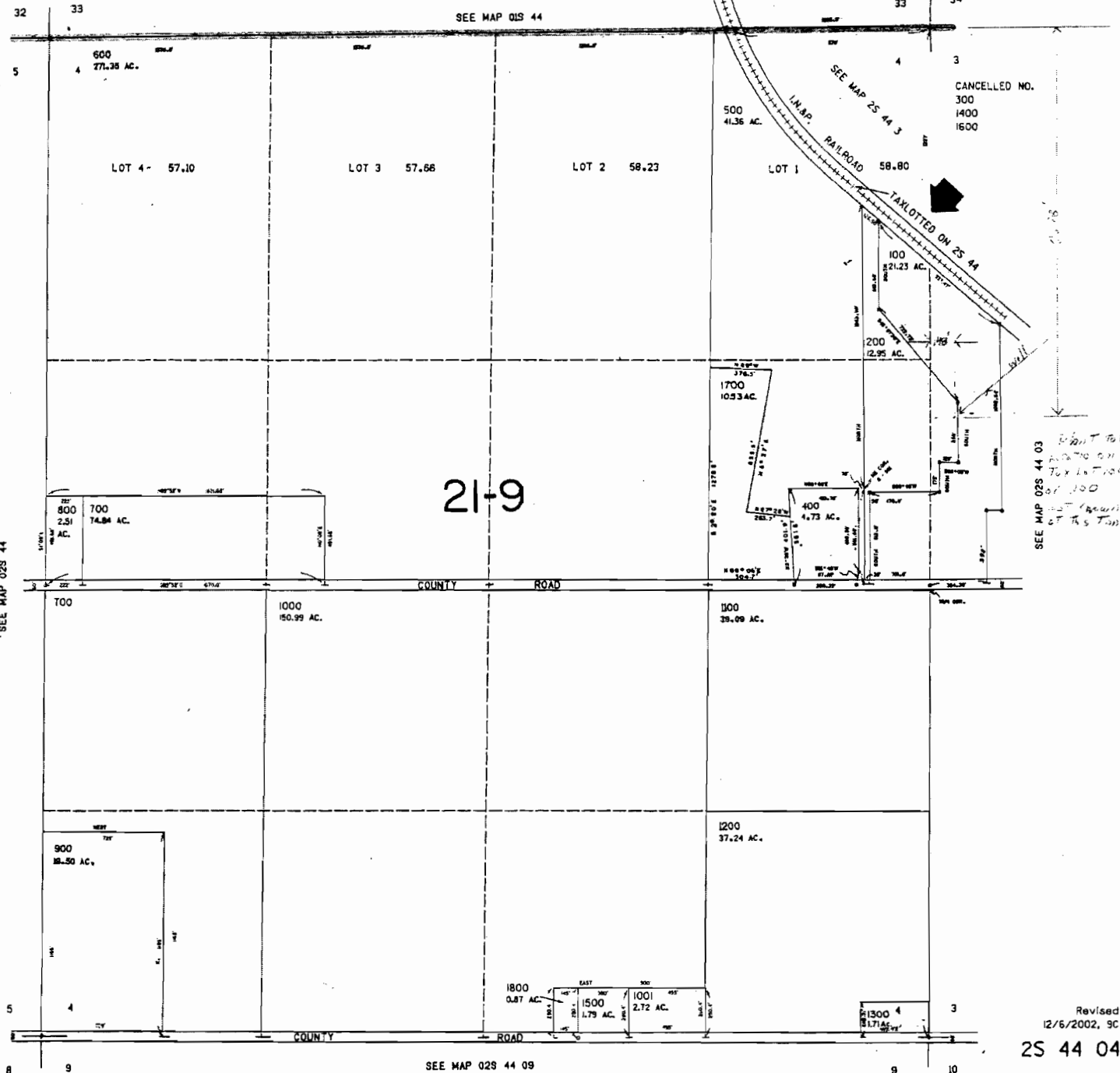
RECEIVED

2S 44 04

DEC 23 2003

WATER RESOURCES DEPT
SALEM, OREGON

CANCELLED NO.
300
1400
1600



SEE MAP 02S 44 03
Unit 100
ADDITIONAL
TAX IN 100
OF 100
AT THE TIME

Revised
12/6/2002, 9C
2S 44 04