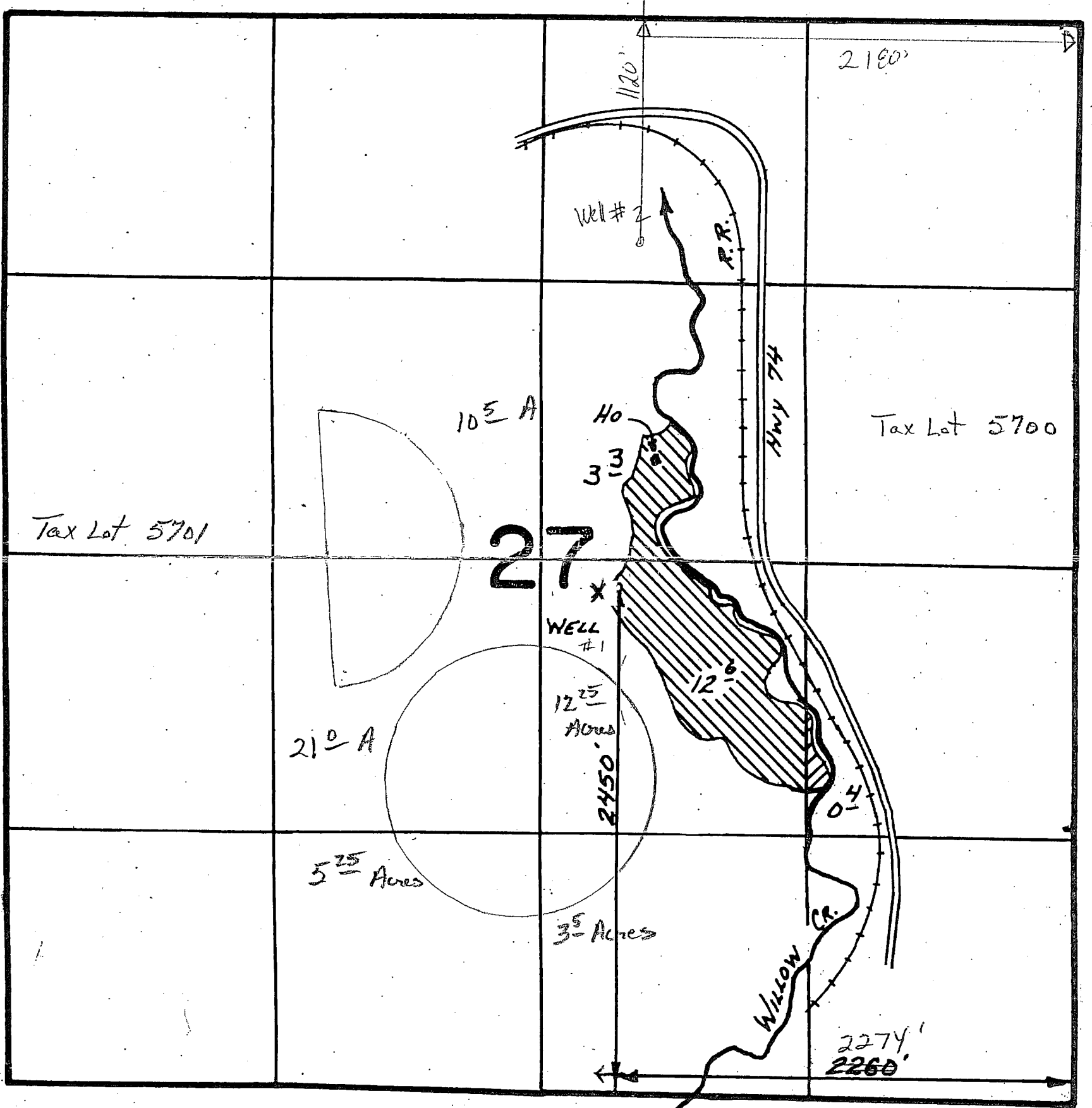


# T.1N.,R.23E.,W.M.



Updated well #1 location 2450' N & 2274' W of SE corner

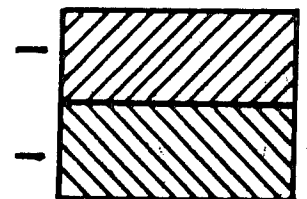
RECEIVED

MAY 26 2010

WATER DEPT.  
SALEM, OREGON

Primary Irrigation

Supplemental Irrigation



REVISED ADJUSTED  
APPROX SCALE

1" = 600 FEET

RECEIVED

JAN 08 2010

**FINAL PROOF SURVEY**  
UNDER

App 9-17253