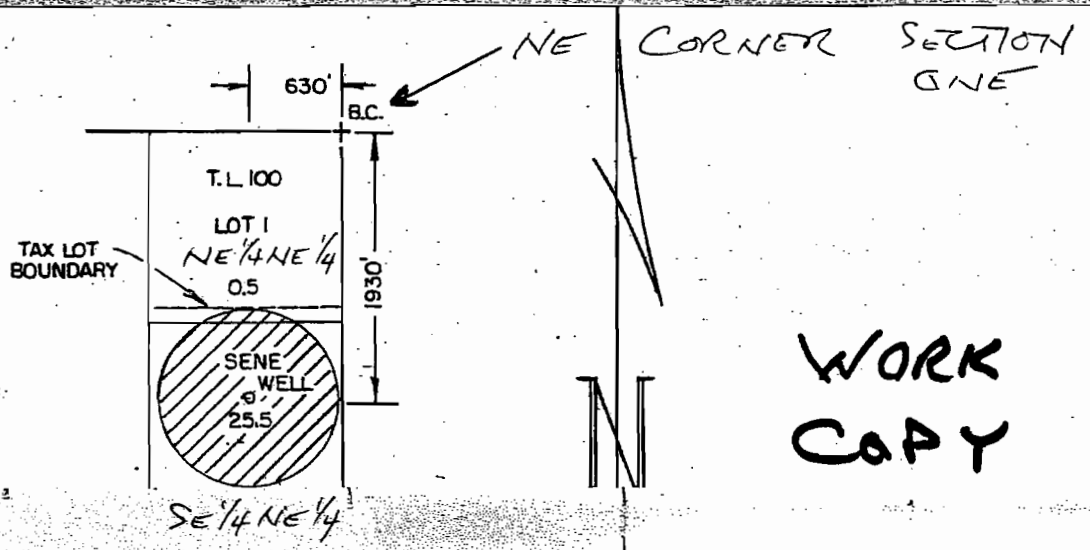


# T 24 S, R 29 E, WM



<p>Chris T. Palmer Nov. 18, 1937 RENEW 1-1-2011</p>	<b>BAUER FAMILY FARM, LLC</b> <b>DIVINE RISE FARMS, LLC</b> <b>WATER RIGHT APPLICATION MAP</b>	
	Scale: 4" = 1 MILE	Date: MAY 2009
	Dsn:	M.A. PALMER & SONS, INC. ENGINEERING & SURVEYING 711 Ponderosa Village • Box 61 Burns, Oregon 97720
	Dm: CHRIS	Sht. No.
Ckd:	of 1	

G-17314

**RECEIVED**

FEB 23 2010

WATER RESOURCES DEPT  
SALEM OREGON