

S1/2, SECTION 36, T23 S, R 32 E, WM

20072562

PARTITION PL

SITUATED

SECTION 36, T23 S, R 32 E

SURVEYOR'S C

I, CHRIS T. PALMER, a Professional that this Partition Plat correctly partition of the S1/2 of Section 36 County, Oregon as more particularly

PARCEL 1 SW1/4.

PARCEL 2 SE1/4, Save & Except the

Containing 322.08 acres and subject reservations, conditions of record.

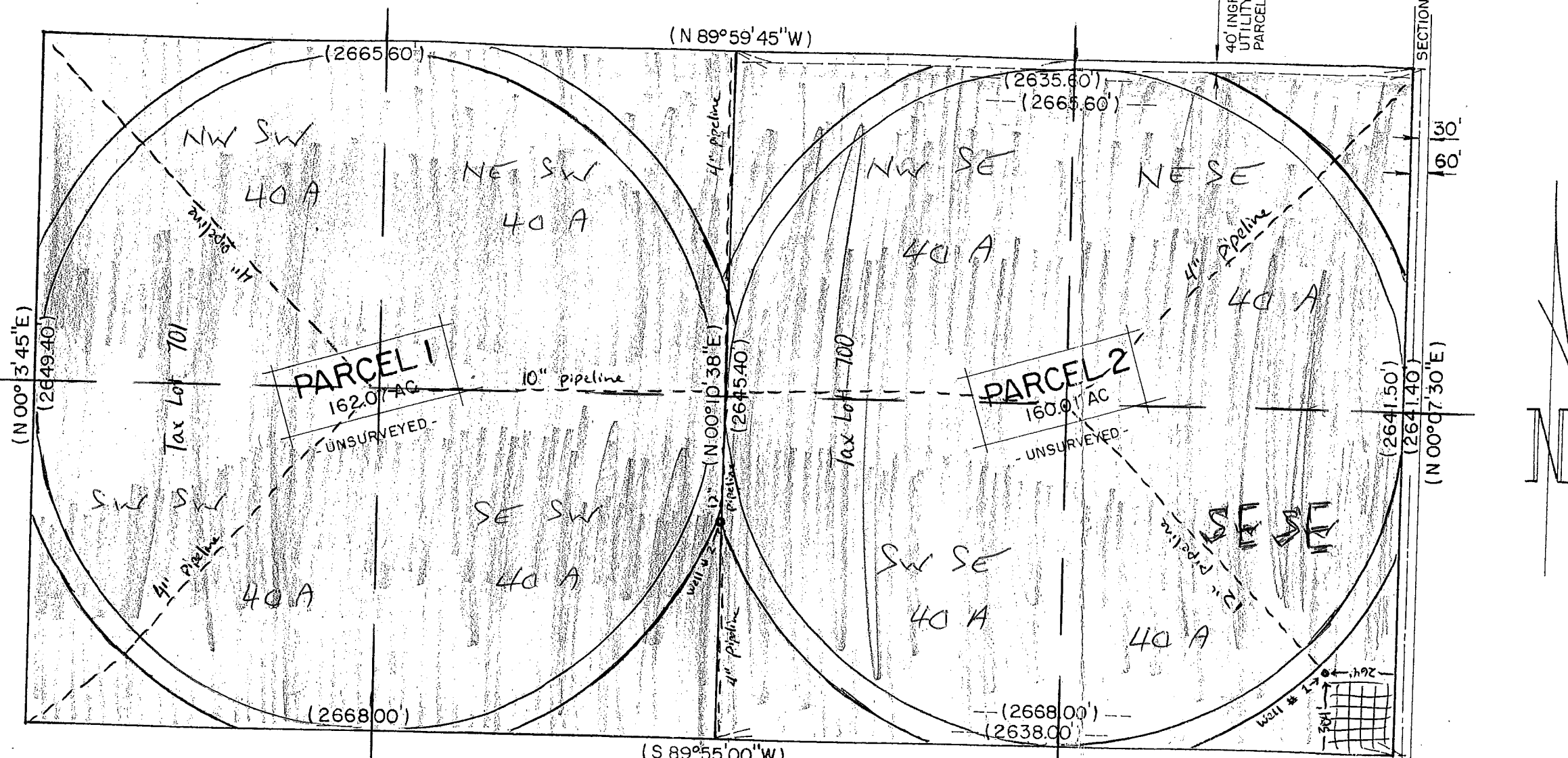
RECEIVED

SEP 21 2009

WATER RESOURCES DEPT
SALEM, OREGON

KNOW ALL MEN BY THESE PRES NECOCHEA, husband & wife, partition has caused said and a 40 foot wide ingress PARCEL 1 and do hereby sub and recording.

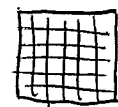
Leonard M. Necochea
LEONARD M NECOCHEA



WORK COPY

ORIGINAL MAP CONTAINED PENCIL

WELL #2 APPROX LOCATION
from SE CORNER SECTION 36
840 FT. NORTH
2640 FT. WEST
APPROVALS



non-irrigated 2 acres



balance 320 acres area of use

LEGEND

() Data of record - Harney County Survey No. 153.

proved this 20 day of November, 2007.

County Surveyor

proved this 28th day of November, 2007.

Harney County Planning Director
Harney County Planning Director

On this 27th day of 2007
notary public in and for sa
M & EDYTHE M NECOCHEA to me
satisfactory evidence to be