

**WORK
CAPY**

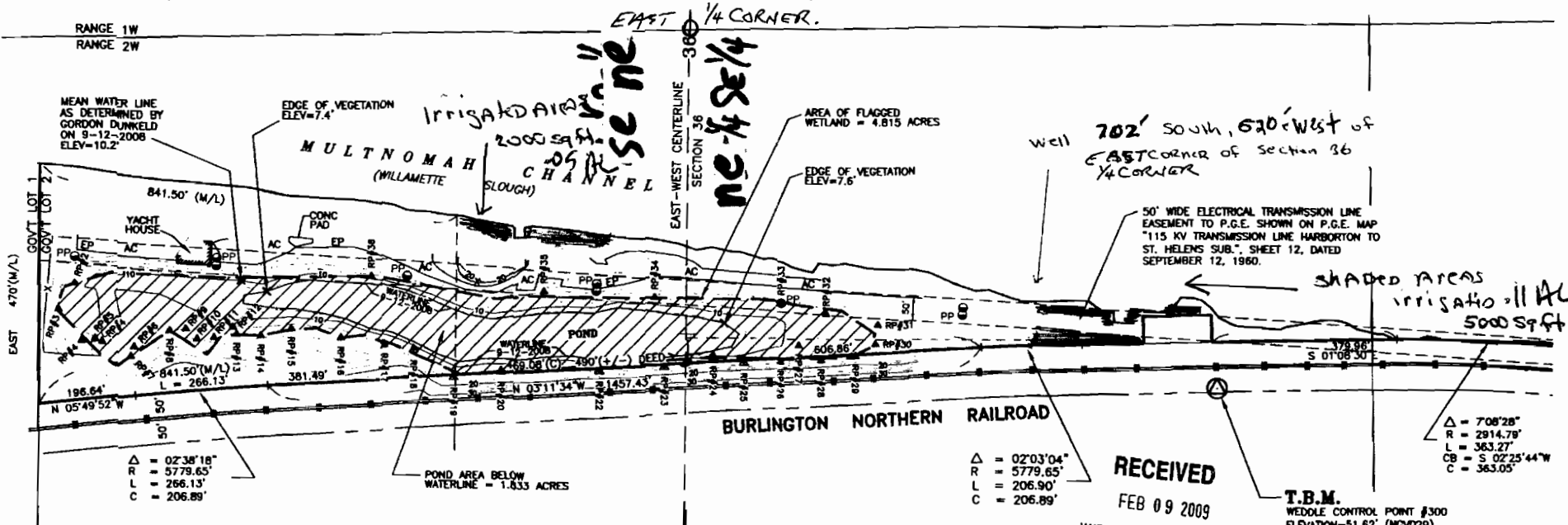
SITE MAP
ROCKY POINTE MARINA
 OF A PORTION OF
 E 1/2 OF SECTION 36
 T.3N., R.2W., WILLAMETTE MERIDIAN
 MULTNOMAH COUNTY, OREGON

G-17176

CLIENT:
 STAN TONNESON
 ROCKY POINTE MARINA
 23586 NW ST. HELENS ROAD
 PORTLAND, OR 97231
 (503) 543-7003

REQUESTED BY:
 GORDON DUNKELD
 WETLAND SPECIALIST
 (503) 952-6867

RANGE 1W
 RANGE 2W



NOTES

1. THIS IS NOT A BOUNDARY SURVEY. PROPERTY LINES SHOWN HEREON ARE PER WEDDLE SURVEYS, JOB NUMBERS 2077, 3407, 3695 AND S.N. 53456 AND ARE FOR REFERENCE ONLY.
2. TOPOGRAPHIC FIELDWORK WAS CONDUCTED BETWEEN SEPTEMBER 4TH AND SEPTEMBER 12TH, 2008.

BASIS OF ELEVATIONS

NGS TIDAL BENCHMARK PID RD0546, A U.S. GEOLOGICAL SURVEY STANDARD DISK, 135 FEET EAST OF THE CENTER OF U.S. HIGHWAY 30, 31 FEET NORTHEAST OF THE ROAD TO THE BOAT BASIN, 6 FEET WEST OF THE WESTERN MOST OF TWIN OAK TREES, AND 1 FOOT NORTH OF A METAL WITNESS POST. ELEVATION = 71.51' (NGVD29)
 LEVELLING FIELDWORK WAS PERFORMED AS PART OF WEDDLE JOB NUMBER 3407 ON JUNE 6, 2002. ELEVATIONS SHOWN HEREON ARE DERIVED FROM FOUND WEDDLE CONTROL POINT NUMBER 300.

LEGEND

- WETLAND DATA POINT
S.N. SURVEY NUMBER, MULTNOMAH COUNTY SURVEY RECORDS
- FLAGGED WETLAND AREA (BY OTHERS)
- ASPHALTIC CONCRETE
- POWER POLE
- CONTOUR MINOR
- CONTOUR MAJOR
- EDGE OF PAVEMENT
- FENCE LINE
- ELEVATION
- RAILROAD TRACKS
- EASEMENT LINE
- T.B.M. TEMPORARY BENCHMARK
- SURVEYOR'S CONTROL POINT

Δ = 02°03'04"
 R = 5779.65'
 L = 206.90'
 C = 206.89'

RECEIVED
 FEB 09 2009
 WATER RESOURCES DEPT
 SALEM, OREGON

T.B.M.
 WEDDLE CONTROL POINT #300
 ELEVATION=51.82' (NGVD29)

Δ = 7°08'28"
 R = 2914.79'
 L = 363.27'
 CB = S 02°25'44" W
 C = 363.05'

**REGISTERED
 PROFESSIONAL
 LAND SURVEYOR**
Benjamin A. Yanez
 OREGON
 SEPT. 11, 2007
BENJAMIN A. YANEZ
 75005
 RENEWAL DATE: JUNE 30, 2010

RECEIVED

JUL 08 2009

WATER RESOURCES DEPT
 SALEM, OREGON

JOB NO. 4308