

1S 13E 0 2200

Revised deep well location
2160' west and 40' south of the
NE corner Section 30.

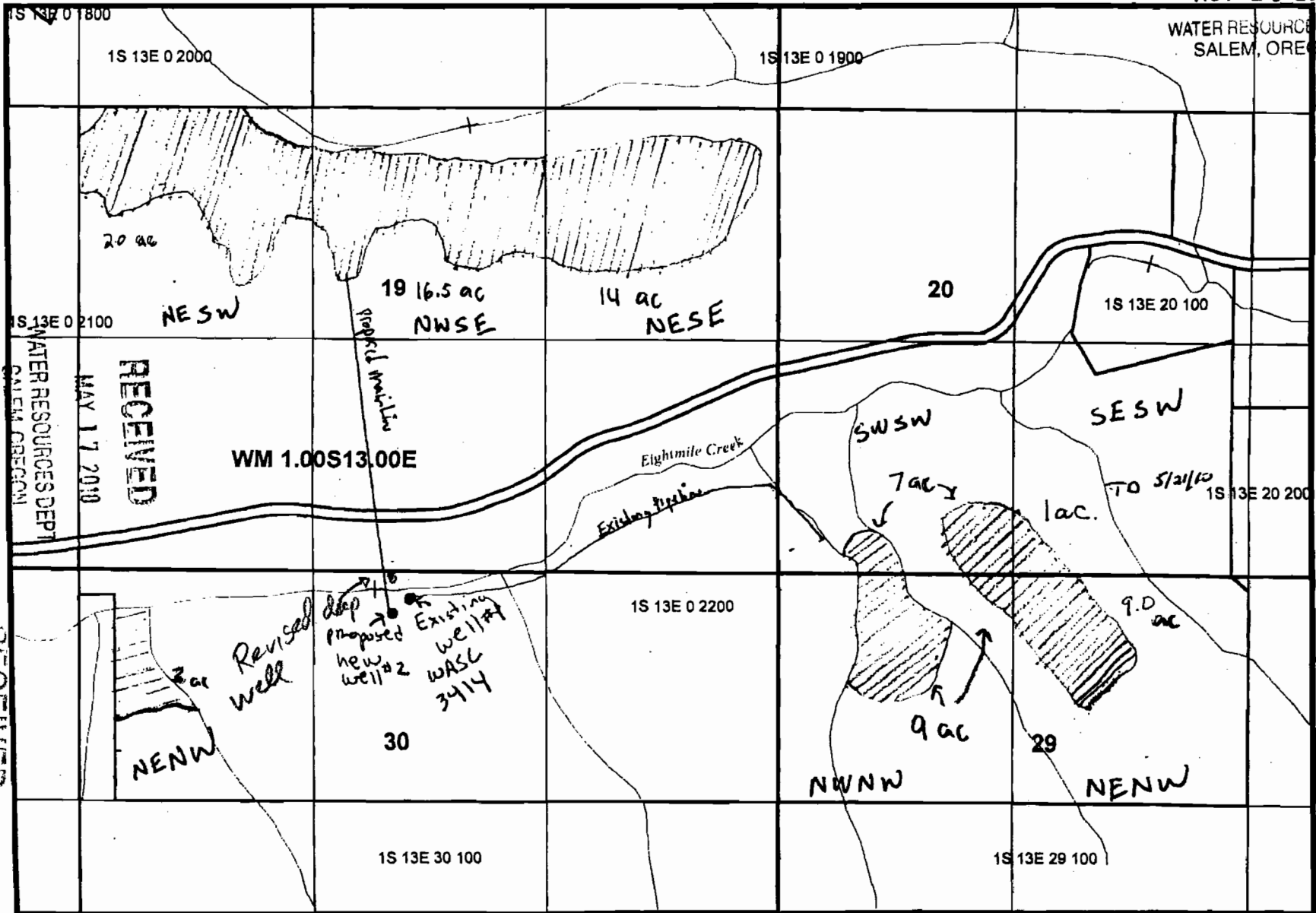
(TD)

RECEIVED

NOV 19 2010

WATER RESOURCES DEPT
SALEM, OREGON

G-1738C

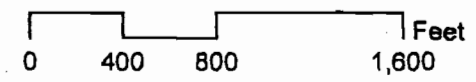


well # 1 (WASC 3414) is 2080' west and
160' south of the northeast corner, section 30.
well # 2 (proposed) will be 2160' west and
240' south of the northeast corner, section 30.

RECEIVED

MAY 21 2010

WATER RESOURCES DEPT
SALEM, OREGON



RECEIVED
MAY 21 2010
WATER RESOURCES DEPT
SALEM, OREGON

RECEIVED
MAY 17 2010
WATER RESOURCES DEPT
SALEM, OREGON