

**T5N, R35E, WM  
Sections 3, 4, 5, 8, 9, 10  
T6N, R35E, WM  
Sections 31 and 32  
UMATILLA COUNTY**

**Points of Appropriation**

POA 3A: 1156 ft N and 314 ft E from S/4 Corner of Section 3. Flowmeter in same location. Well Log UMAT 55526.  
POA 4A: 415 ft S and 500 ft W from Center of Section 4. Flowmeter in same location. Well Log UMAT 55523.

POA 4D: 375 ft S and 940 ft W from Center of Section 4. Flowmeter in same location. Well Log UMAT 56382.  
POA 50516: 335 ft S and 1516 ft E from NW Corner of Section 4. Flowmeter in same location. Well Log UMAT 50516.

**Conveyance**

Conveyance system is buried pressure pipeline ranging in size from 15 to 6 inches in diameter. All four wells discharge into common mainline, so water from any well can flow into any reservoir/bulge.

**Reservoir (Bulge)**

Water to be stored in five reservoirs on year-round basis to protect liners from wind and solar exposure.  
All water stored in reservoirs/bulges is beneficially used for irrigation under existing Permit G-15883 (currently pending final certification).

**EAST BULGE (E)**  
Location: T5N, R35E, Sec 3, SW SE  
Coords: 1320 ft N and 445 ft E from S 1/4 Cor Sec 3  
Tax Lot: 1801  
Surface Area: 1.74 acres  
Volume: 22.59 acre-feet  
Dam Height: 7.8 feet

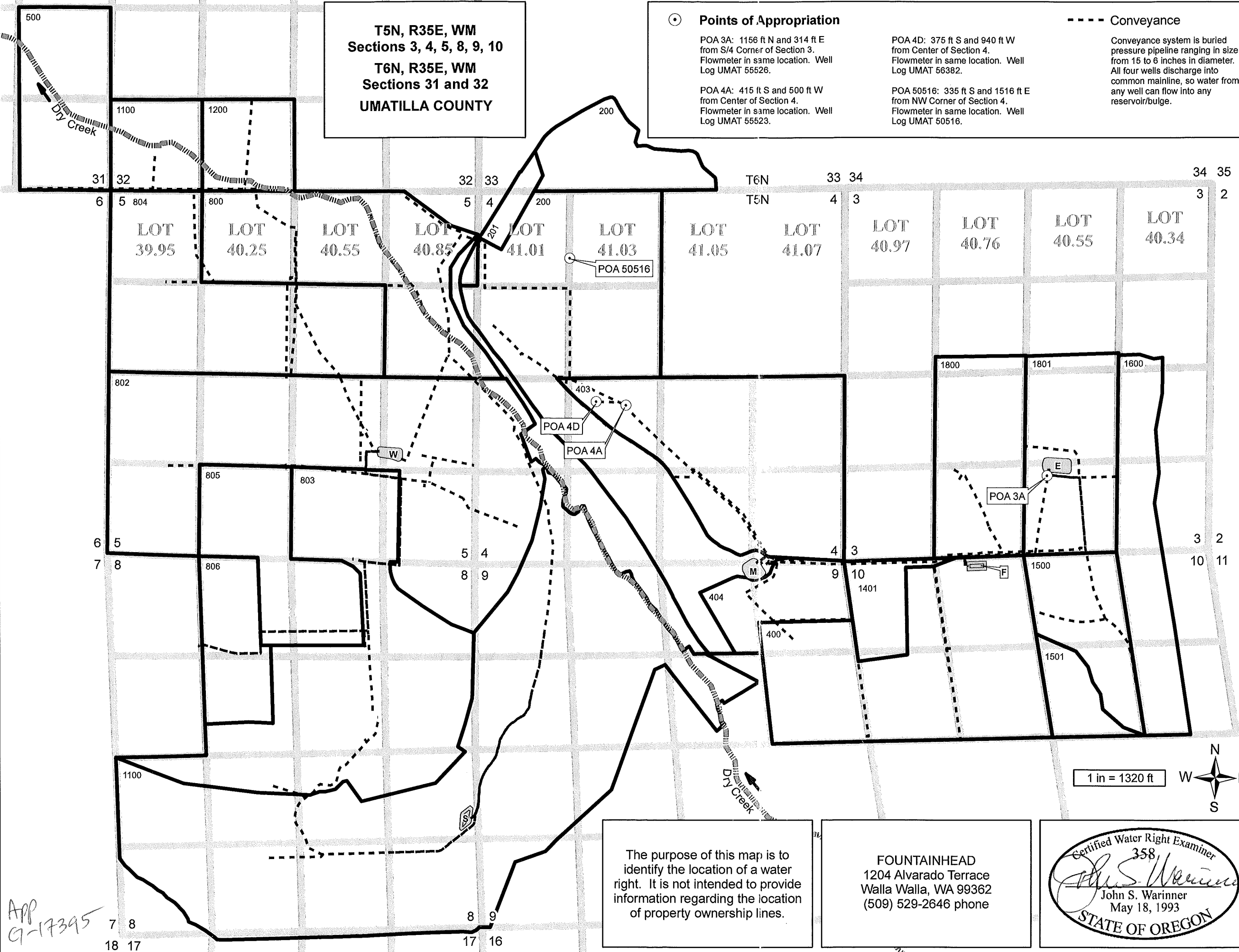
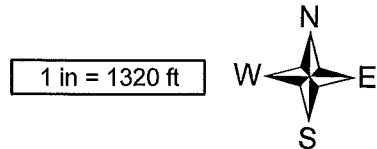
**FERGUSON BULGE (F)**  
Location: T5N, R35E, Sec 10, NE NW  
Coords: 175 ft S and 680 ft W from N 1/4 Cor Sec 10  
Tax Lot: 400  
Surface Area: 0.72 acre  
Volume: 6.64 acre-feet  
Dam Height: 7.4 feet

**MIDDLE BULGE (M)**  
Location: T5N, R35E, Sec 9, NE NE and NW NE  
Coords: 145 ft S and 1320 ft W from NE Cor Sec 9  
Tax Lot: 200  
Surface Area: 1.49 acres  
Volume: 8.42 acre-feet  
Dam Height: 5.4 feet

**WEST BULGE (W)**  
Location: T5N, R35E, Sec 5, NE SE and NW SE  
Coords: 1105 ft S and 1215 ft W from E 1/4 Cor Sec 5  
Tax Lot: 802  
Surface Area: 1.20 acres  
Volume: 13.20 acre-feet  
Dam Height: 8.3 feet

**SOUTH BULGE (S)**  
Location: T5N, R35E, Sec 8, NE SE  
Coords: 1005 ft S and 110 ft W from E 1/4 Cor Sec 8  
Tax Lot: 1100  
Surface Area: 0.89 acre  
Volume: 7.62 acre-feet  
Dam Height: 6.1 feet

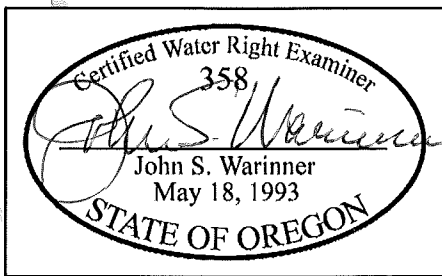
**RECEIVED**  
JUL 23 2010  
WATER RESOURCES DEPT  
SALEM, OREGON



APP  
G-17395

The purpose of this map is to identify the location of a water right. It is not intended to provide information regarding the location of property ownership lines.

**FOUNTAINHEAD**  
1204 Alvarado Terrace  
Walla Walla, WA 99362  
(509) 529-2646 phone



**APPLICATION MAP**  
**For Permit to Store Groundwater  
in Reservoirs on Year-Round Basis**  
  
in the name of  
**SEVEN HILLS PROPERTIES, LLC**  
  
Revised: 20 JUL 2010