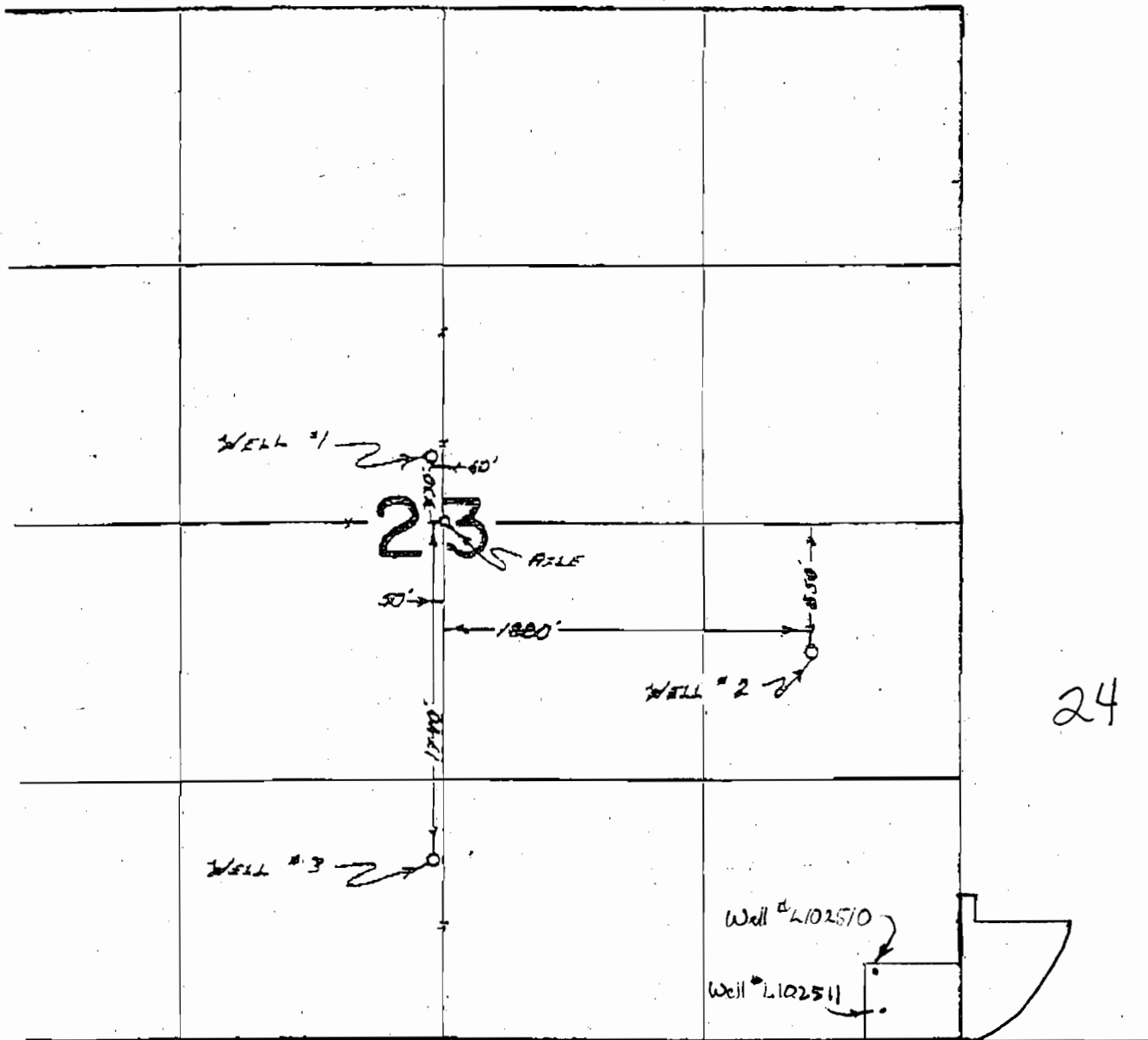


T. 23 S. R. 30 E. W.M.

Approx SCALE
1" = 800 FEET



24

Well # L102510 Located west 460 ft, 340 feet North
from S.W. Corner of S.E. Corner Section 23

Section 26

Well # L102511 Located west 411 ft, 155 feet North
of S.E. Corner Section 23

G-17424

RECEIVED

SEP 24 2010

25

WATER RESOURCES DEPT
SALEM, OREGON