

ation suitable

NE1/4 SEC 35 T5N R28E WM

Revised: 01/26/09

5N 28 35A

UMATILLA COUNTY

AERIAL PHOTO NO. 1P-103

RECEIVED

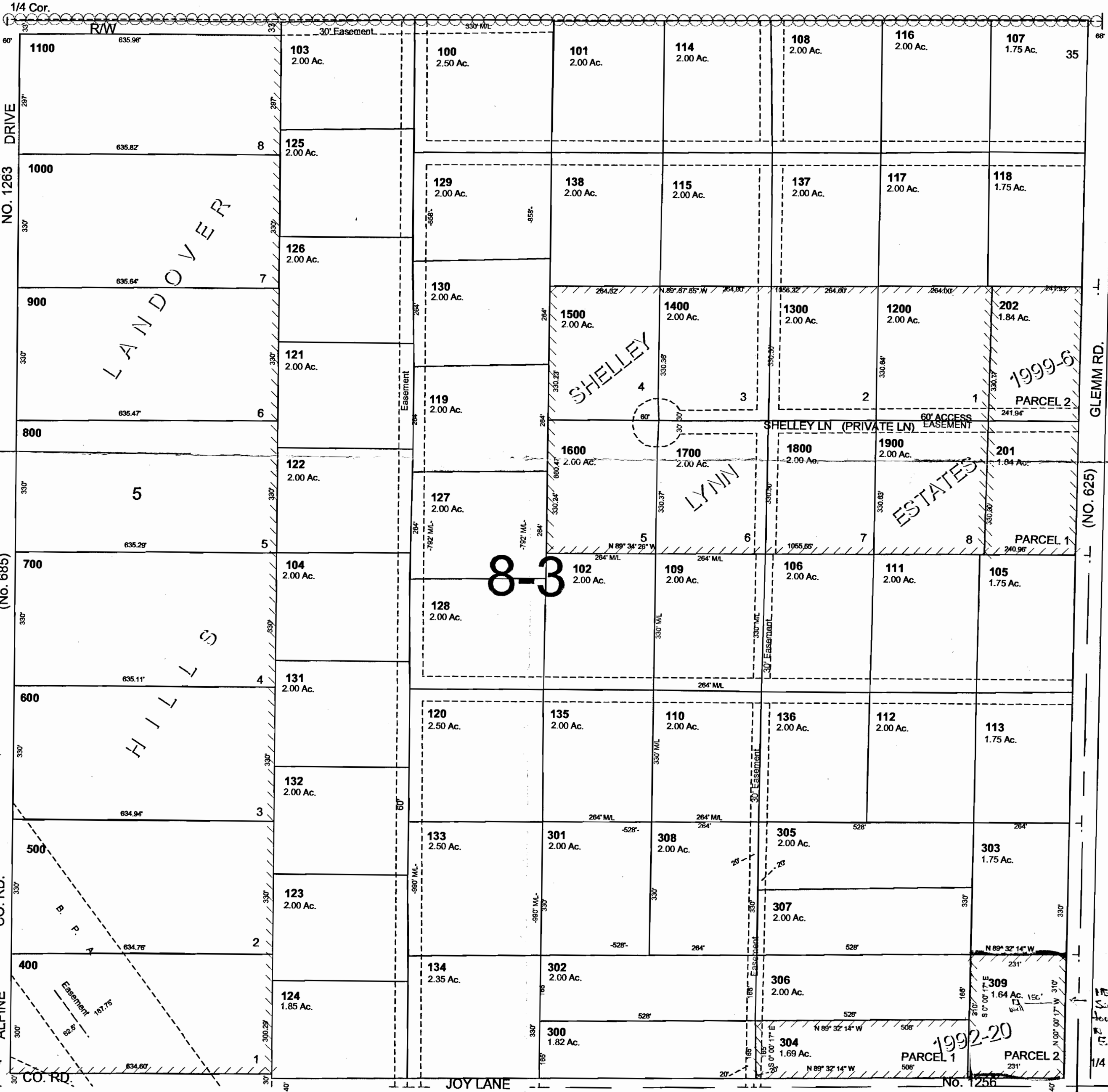
SCALE 1"=200'

SEP 07 2010

WATER RESOURCES DEPT
SALEM, OREGON

See Map 5N 28 26D

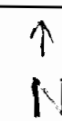
26 25



See Map 5N 28 35B

See Map 5N 28 36B

See Map 5N 28 35D



N 89° 32' 14" W 792

G-17421

5N 28 35A

NE 1/4
Section 35
Township 5
Range 28
1/4 Cor.