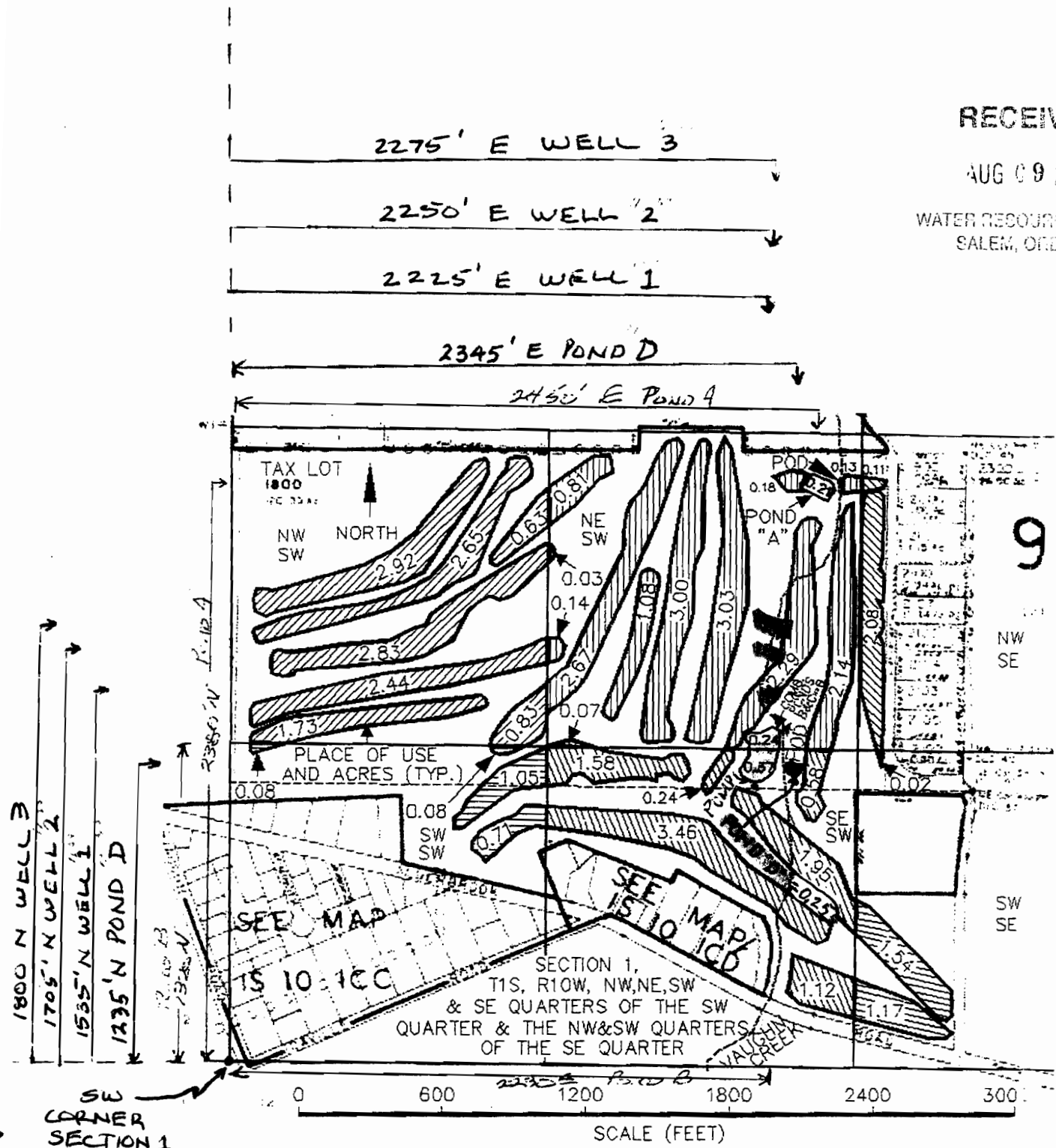


RECEIVED

AUG 09 2010

WATER RESOURCES DEPT
SALEM, OREGON



9

- * POND "B" (OLD PONDS B & C COMBINED) LOCATION:
930' W FROM SE COR. SMITH DLC 45
1320' NORTH AND 2230' EAST FROM SW CORNER OF SECTION 1
- * POND "A" LOCATION: LANDSCAPE USE
2380' NORTH AND 2450' EAST FROM SW CORNER OF SECTION 1
- * DIV. PTS. LOCATIONS: CREEK - 1200' N & SE SW;
250' N & 850' WEST, ALL FROM SE COR.
SMITH DLC 45
- * POND "D" LOCATION: 1235' NORTH & 2345' EAST FROM SW CORNER OF SECTION 1

- WELL 1 LOCATION: 1535' N. & 2225' E. FROM SW CORNER OF SECTION 1.
- WELL 2 LOCATION: 1705' N. & 2250' E. FROM SW CORNER OF SECTION 1.
- WELL 3 LOCATION: 1800' N & 2275' E. FROM SW CORNER OF SECTION 1.