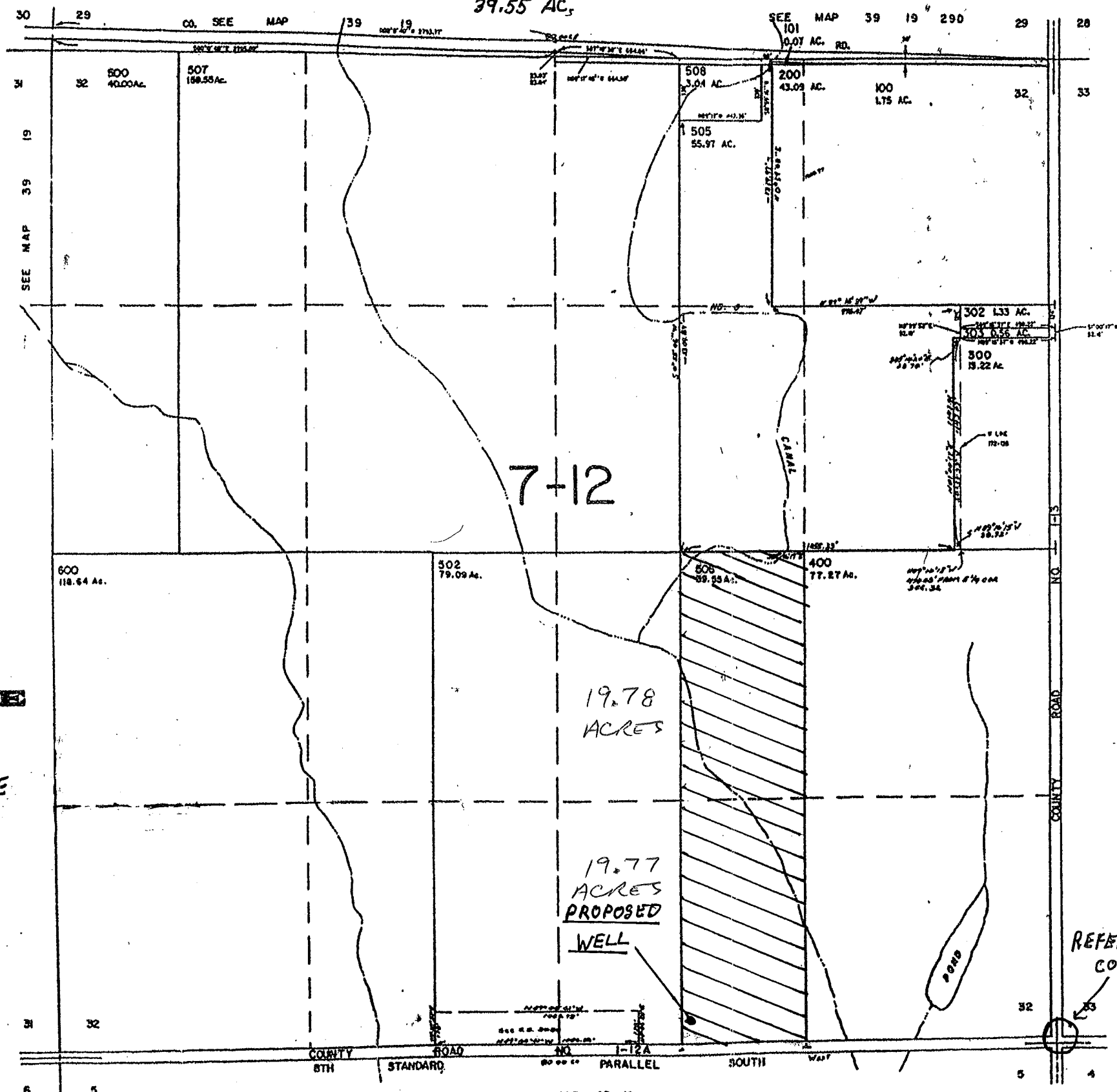


G-17311  
TAX LOT 506  
E 1/2 W 1/2 SE 1/4 SEC. 32, TWP. 39S. R. 19E W.M.

SECTION 32 T.39S. R.19E. W.M.  
LAKE COUNTY

1" = 660'  
39.55 AC.



PROPOSED WELL  
1980' WEST - 124' NORTH  
FROM THE S.E. CORNER OF  
SECTION 32



 PLACE OF USE

RECEIVED  
FEB 11 2010  
WATER RESOURCES DEPT  
SALEM, OREGON

REFERENCE  
CORNER