

DATE	REVISION	EMPLOYEE
6/28/00	L.L.A. T.L.'S 110 & 16032700-400	LCAT479
12/8/00	PTN. 200 INTO 201 & 202	LCAT479
12/8/00	CANC. 200 INTO 201	LCAT479

LANE COUNTY

1"=400'

See Map 16 03 27

Daniels Creek

Daniels Creek

CANCELLED
00
07
08
100
102

28 27
33 34

Tax Lotted On Map
16 03 28

SW COR.
W.M. SHIRLEY
D.L.C. 62

NW COR.
I.S. SWEARINGER
D.L.C. 37
202
107.35 AC.

SE Cor.
DLC. No. 62
SW Cor.
Thomas J. Vaughan
DLC No. 38

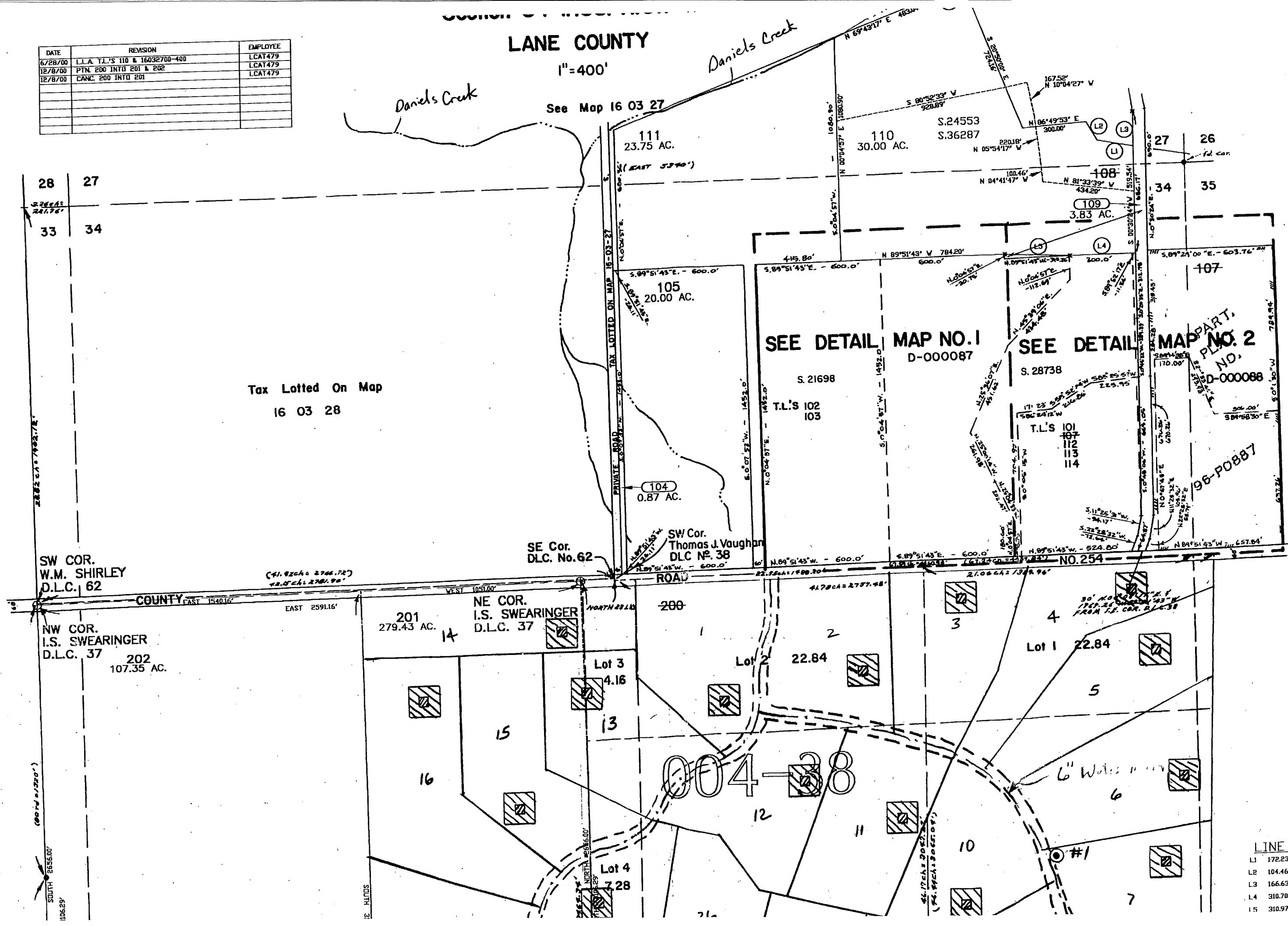
NE COR.
I.S. SWEARINGER
D.L.C. 37

201
279.43 AC.

004-38

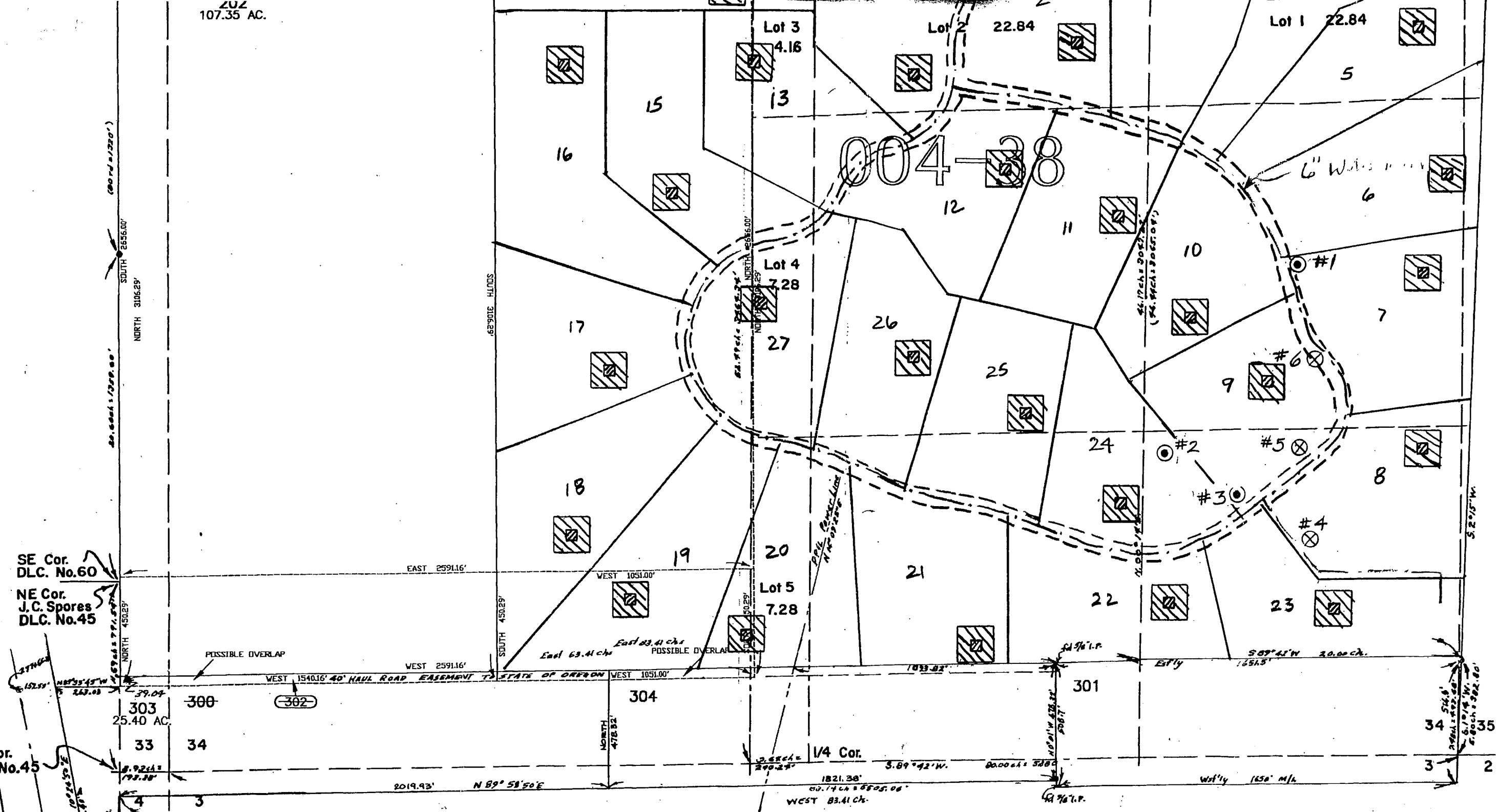
LINE T

L1	172.23'
L2	104.46'
L3	166.63'
L4	310.70'
L5	310.97'



ZUZ
107.35 AC.

See Map 16 03



LINE TABLE

L1	172.23'	N 78°
L2	104.46'	N 29°
L3	166.63'	S 00°
L4	310.70'	N 89°
L5	310.97'	N 86°
L6	181.31'	N 79°

Leg:

(Ref Or

SE Cor.
DLC. No.60

NE Cor.
J.C. Spores
DLC. No.45

or.
No.45

POSSIBLE OVERLAP

WEST 1540.16' 40' HAUL ROAD EASEMENT TO STATE OF OREGON

East 63.41 ch
East 83.41 ch
POSSIBLE OVERLAP

1/4 Cor.

2019.93' N 89° 51' 50" E

1821.30'
00.14 ch 8805.00'
WEST 83.41 ch.

with 1650' M/L