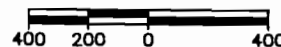


RECEIVED

MAY 12 2008

WATER RESOURCES DEPT
SALEM, OREGON



LOCATED IN:
SE 1/4 OF SE 1/4 OF SECTION 23;
SW 1/4 OF SW 1/4 OF SECTION 24;
N 1/2 OF NW 1/4 OF SECTION 25; AND
NE 1/4 OF NE 1/4 OF SECTION 26
IN T3S R3W, W.M. YAMHILL COUNTY

LEGEND

TL 700 TAX LOT

(NW-NW) 1/4 1/4 SECTION

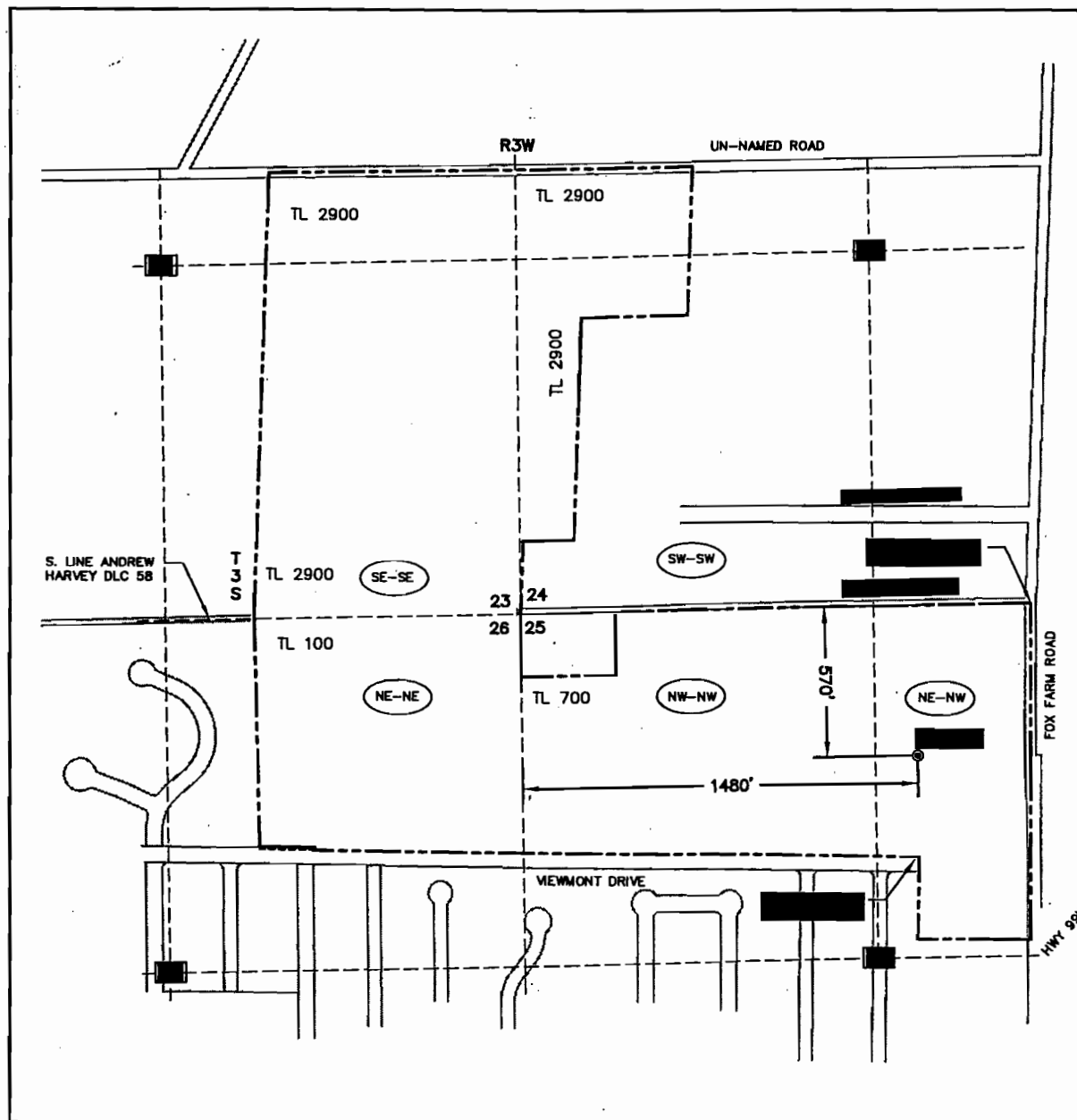
[SW] 1/4 SECTION

--- PROJECT BOUNDARY

SECTION	QTR-QTR	ACRES PLUS DOMESTIC
23	SE-SE	4.5
24	SW-SW	1.0
25	NW-NW	6.0
25	NE-NW	3.5
26	NE-NE	5.0

NOTES:

1. THIS MAP WAS PREPARED FOR THE PURPOSE OF IDENTIFYING THE LOCATION OF WATER RIGHTS ONLY AND IS NOT INTENDED TO PROVIDE LEGAL DIMENSIONS OR LOCATIONS OF PROPERTY OWNERSHIP LINES.



VINEYARDS AT DUNDEE SPRINGS

CES NW

BLACK FAMILY VINEYARD, LLC
1800 NW HUNTER ROAD, STE 200
LAKE OSWEGO, OREGON 97030
503-685-1315
WWW.BVAVINEYARDS.COM

GROUNDWATER
APPLICATION G-16346

1
1

Appl. G-16346