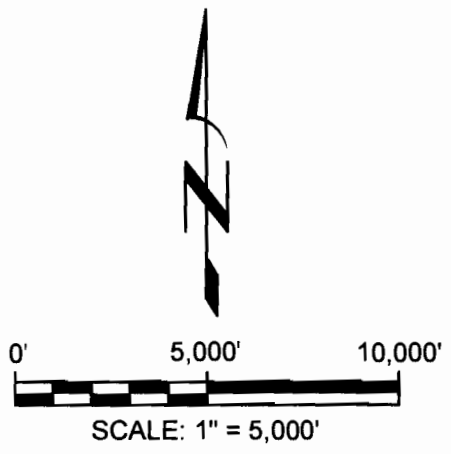
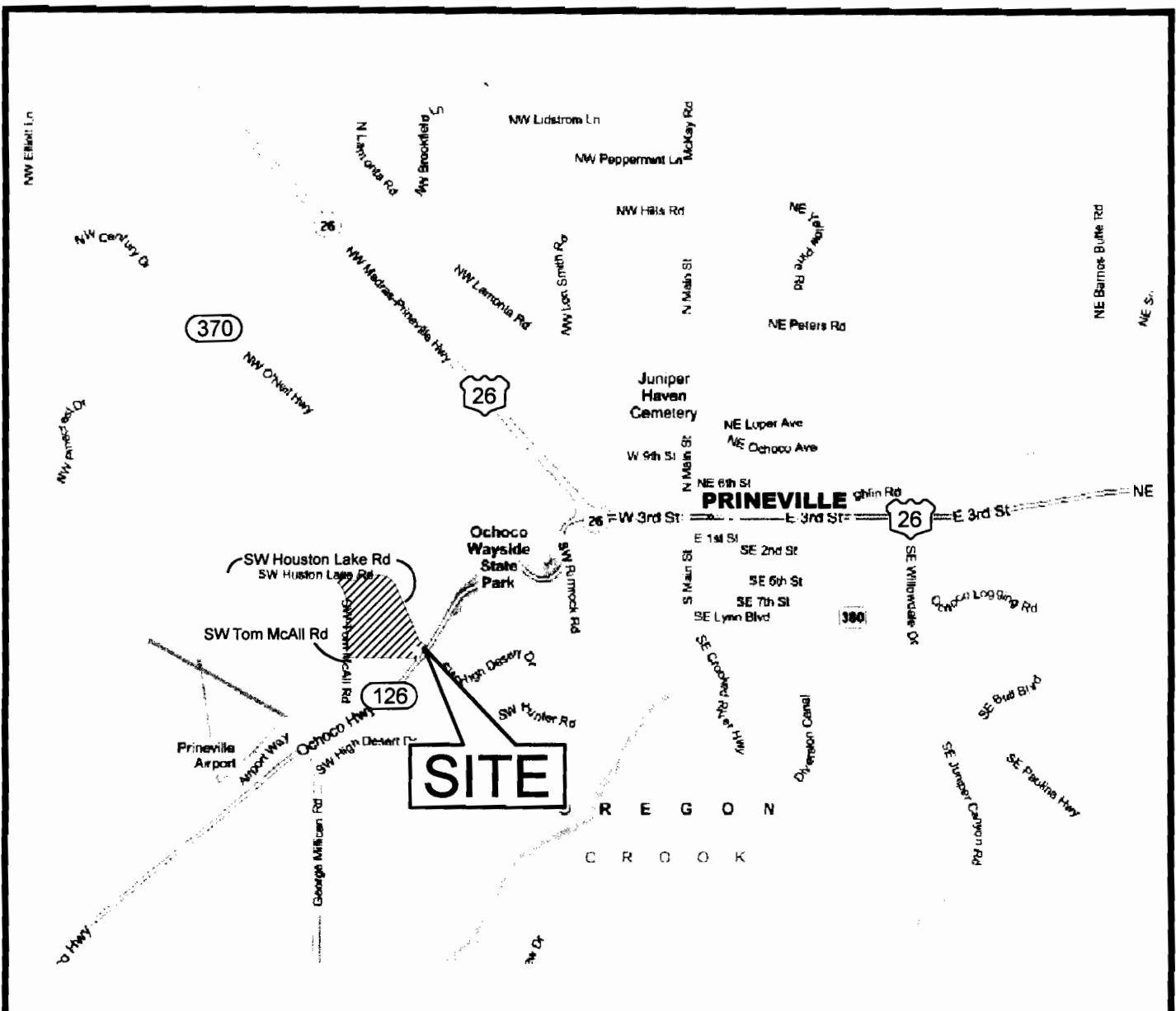


G:\1000\1092\101\Cad\Water\W1092101_F1_VicMap 15:35 02/23/2010 SS



RECEIVED

MAR 31 2010

WATER RESOURCES DEPT
SALEM, OREGON



NEWTON
CONSULTANTS INC.
Earth, Water and Rock Specialists
Ph 541 504-9960 Fax 541 504-9961

Vicinity Map
Vitesse, LLC - Data Center
Crook County, Oregon

DESIGNED BY: J. Newton	DRAWN BY: S. Schenck	DATE: FEB 2010	PROJECT NO. 1092-101	FIGURE 1
----------------------------------	--------------------------------	--------------------------	--------------------------------	--------------------

G17338


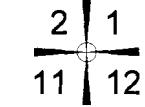


**GROUNDWATER
APPLICATION MAP
TAX LOT 311**

Located in NW-SW, NE-SW, SE-SW,
and SW-SW of Section 1 and
Located in NE-SE and SE-SE of Section 2
T.15S. R.15E., W.M.
Crook County, Oregon

NOTES

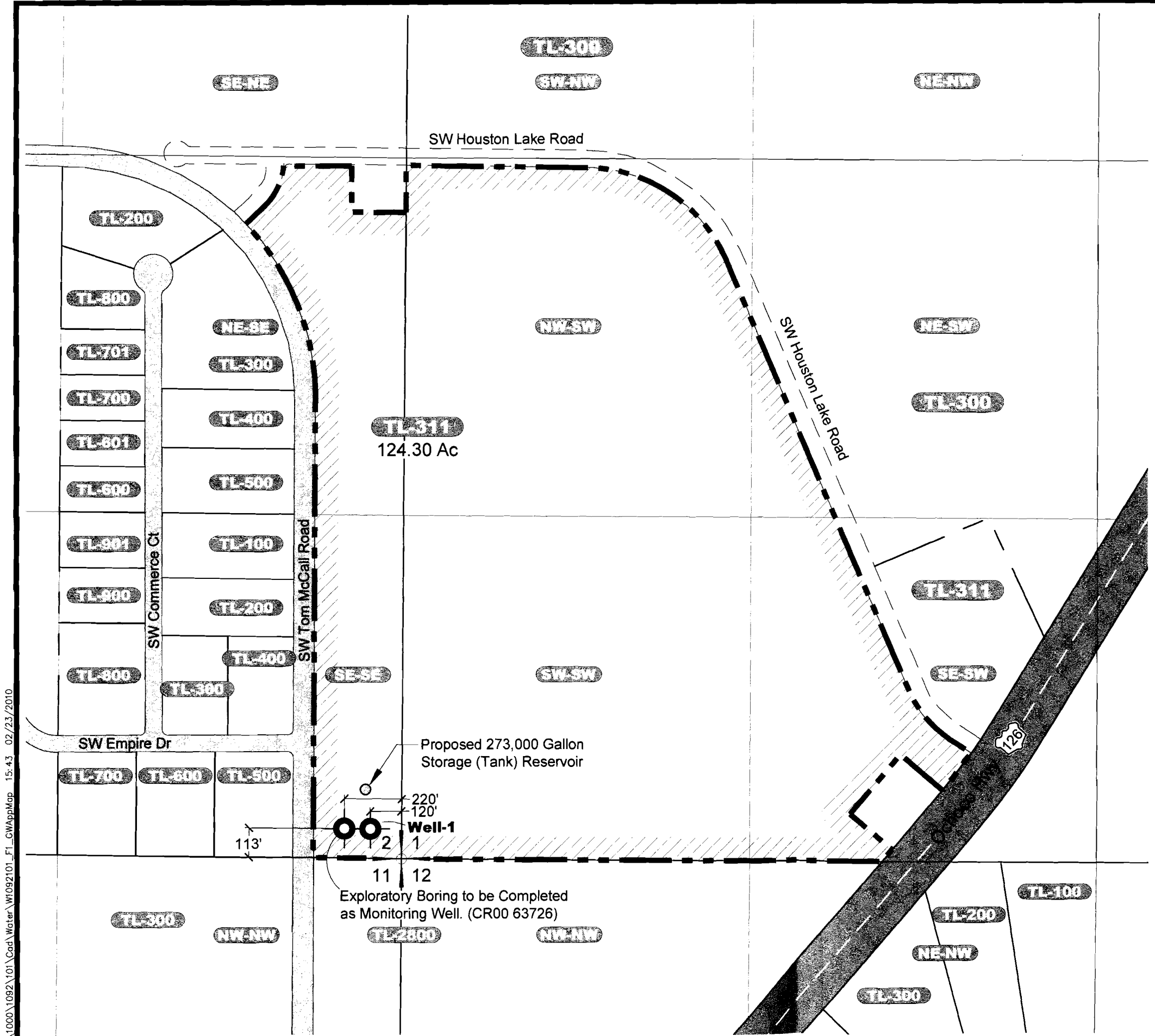
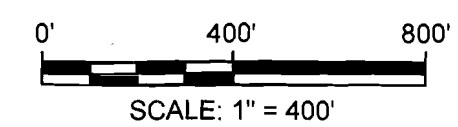
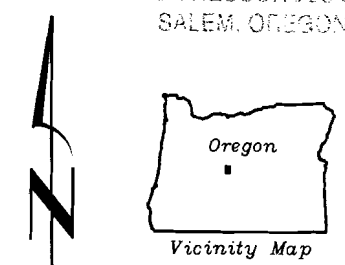
1. This map was prepared for the purpose of identifying the location of water rights only and is not intended to provide legal dimensions or locations of property ownership lines.
2. Tax Lot numbers and boundaries based on available online maps from Crook County Assessors, as of 1/29/2010.

LEGEND

-  **Well-1**
Approximate Locations of Wells
-  Section Corner
-  Tax Lot Locations
-  Proposed Place of Use Boundary

RECEIVED

WATER RESOURCES DEPT
SALEM, OREGON



Groundwater Application Map
Vitesse, LLC - Data Center
Crook County, Oregon



**NEWTON
CONSULTANTS INC.**
Earth, Water and Rock Specialists
Ph: 541 504-9960 Fax 541 504-9961

DESIGNED BY:	J. Newton	DATE:	FEB 2010	PROJECT NO:	1092-101	FIGURE	1
DRAWN BY:	S. Schenck						

G:\1000\1092\101\Cad\Water\W1092101_FL_GWAppMap 15:43 02/23/2010

G17338