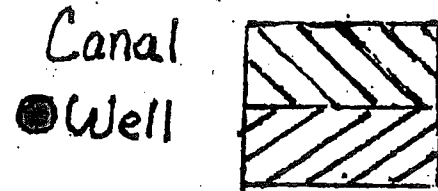


OWYHEE IRRIGATION DISTRICT

MAP #1

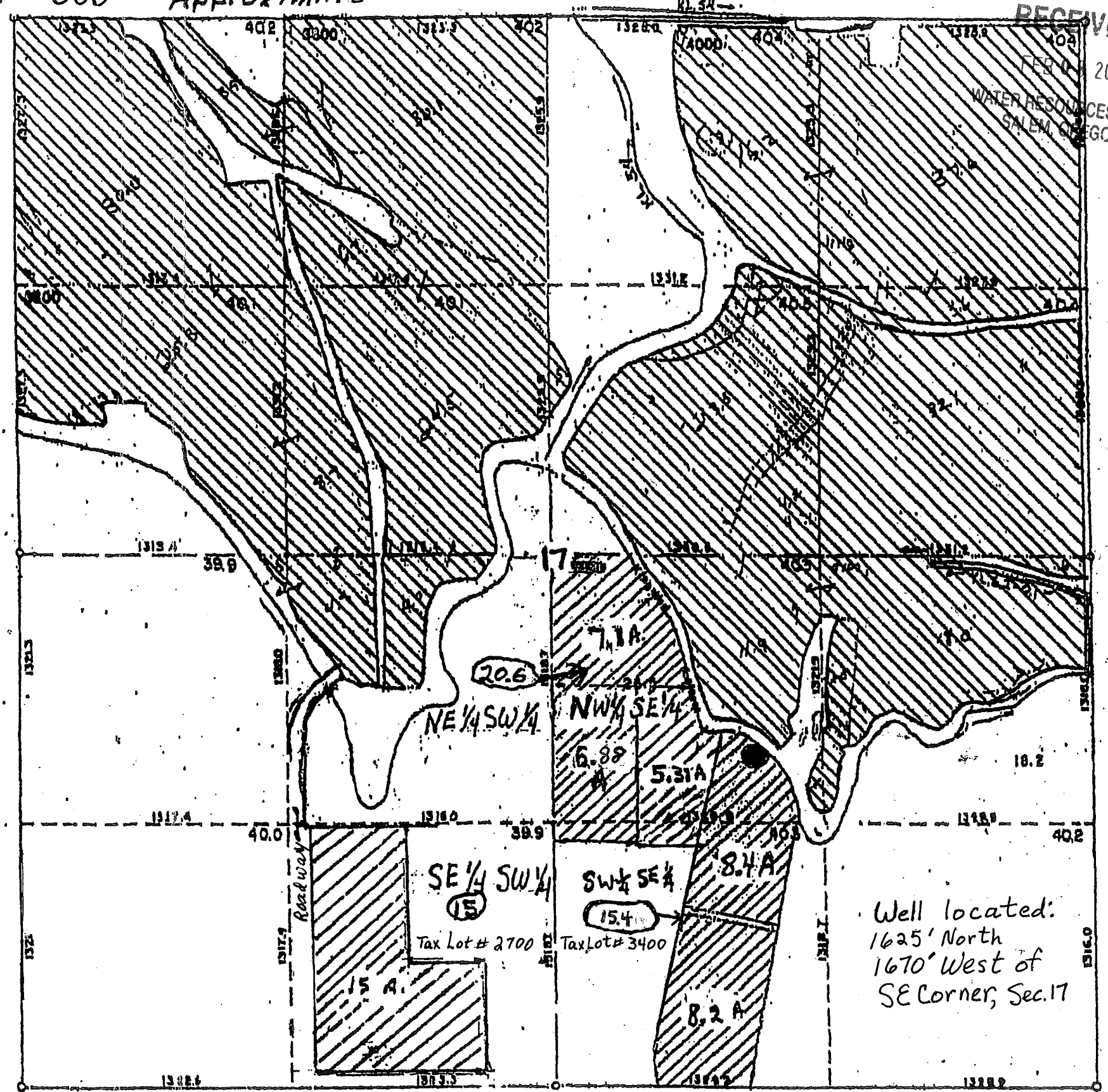
Water Legend



Acres Irrigated in 1/4, 1/4, ~~xx~~

51 Total

SCALE: 1" = 600' APPROXIMATE



RECEIVED

FEB 4 2010

WATER RESOURCES DEPT
SALEM, OREGON

Well located:
1625' North
1670' West of
SE Corner, Sec. 17

SEC. 17 - T. 21 S. - R. 46 E.
18-182-1244

REVISED: JAN 2010 - Feb. 4, 2010 M.T.