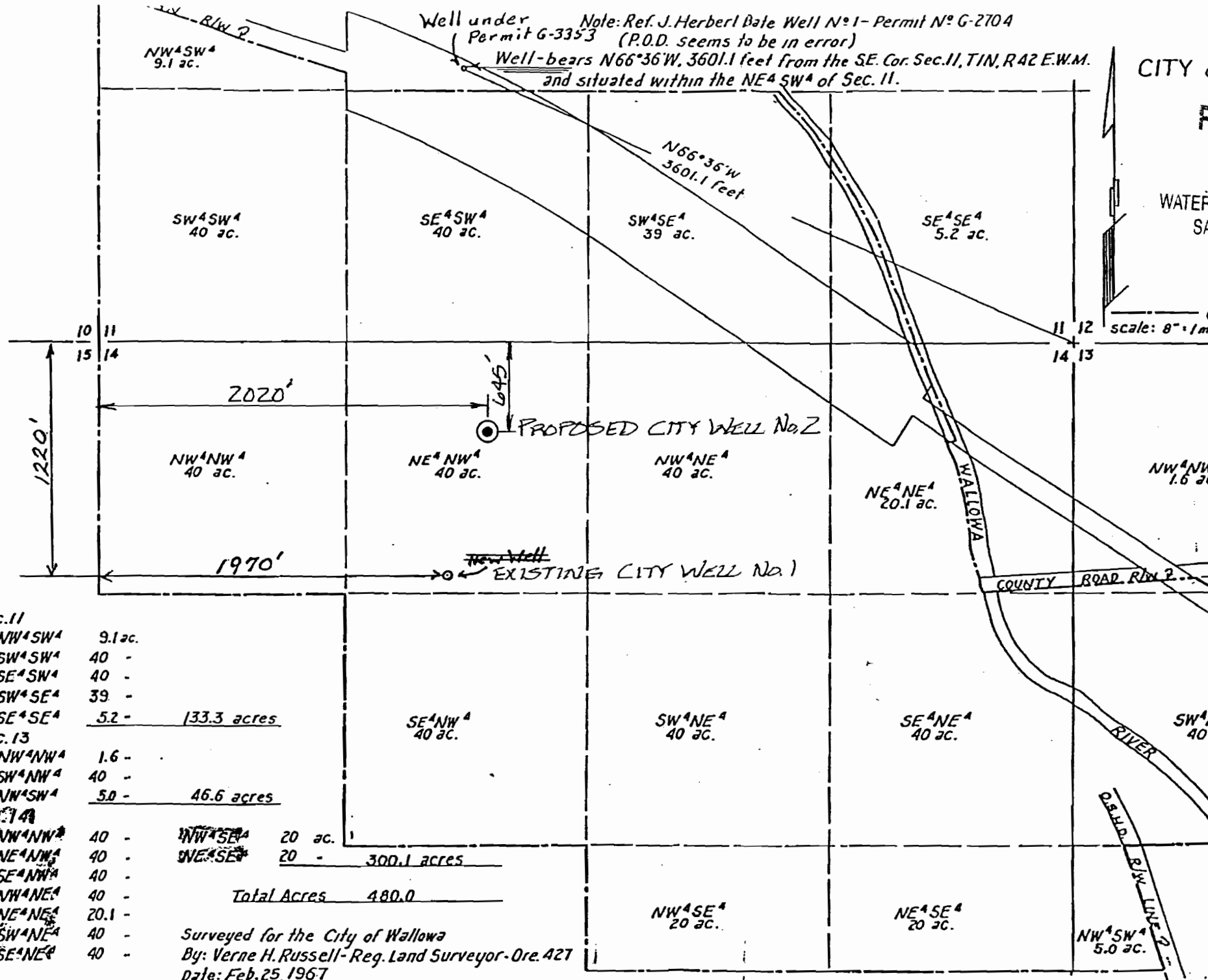


Well under Permit G-3353 (P.O.D. seems to be in error)
 Note: Ref. J. Herberl Dale Well No 1 - Permit No G-2704
 Well-bears N66°36'W, 3601.1 feet from the SE. Cor. Sec. 11, T1N, R42 E.W.M.
 and situated within the NE⁴ SW⁴ of Sec. 11.



Sec. 11

NW ⁴ SW ⁴	9.1 ac.
SW ⁴ SW ⁴	40 -
SE ⁴ SW ⁴	40 -
SW ⁴ SE ⁴	39 -
SE ⁴ SE ⁴	5.2 -
<hr/>	
	133.3 acres

Sec. 13

NW ⁴ NW ⁴	1.6 -
SW ⁴ NW ⁴	40 -
NW ⁴ SW ⁴	5.0 -
<hr/>	
	46.6 acres

Sec. 14

NW ⁴ NW ⁴	40 -	NW ⁴ SE ⁴	20 ac.
NE ⁴ NW ⁴	40 -	NE ⁴ SE ⁴	20 -
SE ⁴ NW ⁴	40 -	<hr/>	
NW ⁴ NE ⁴	40 -	300.1 acres	
NE ⁴ NE ⁴	20.1 -	<hr/>	
SW ⁴ NE ⁴	40 -	Total Acres 480.0	
SE ⁴ NE ⁴	40 -		

Surveyed for the City of Wallowa
 By: Verne H. Russell - Reg. Land Surveyor - Ore. 427
 Date: Feb. 25, 1967

T 11359

CITY of
 WATER
 SA
 scale: 8" = 1 mi