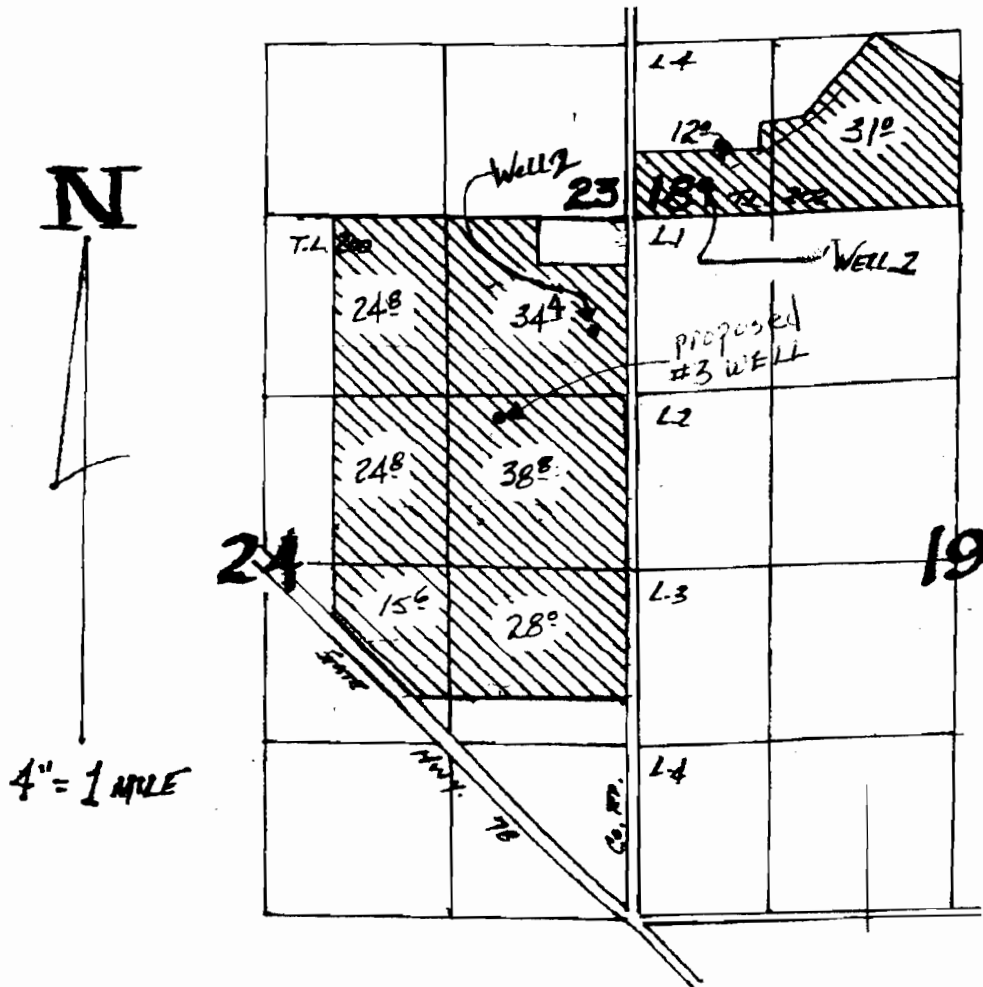


AMENDED April 23, 2012

# APPLICATION MAP for STEVE RICKMAN

## T. 23 S., R. 31 & 32 E., W. 4



WELLS LOCATED: #2-1120' S. & 420' W.; #1-280' N. & 520' E.;  
all from NE Cor. Sec. 24.  
#3-1800' S & 1000' W from  
NE Cor. Sec. 24

G16654

1011411

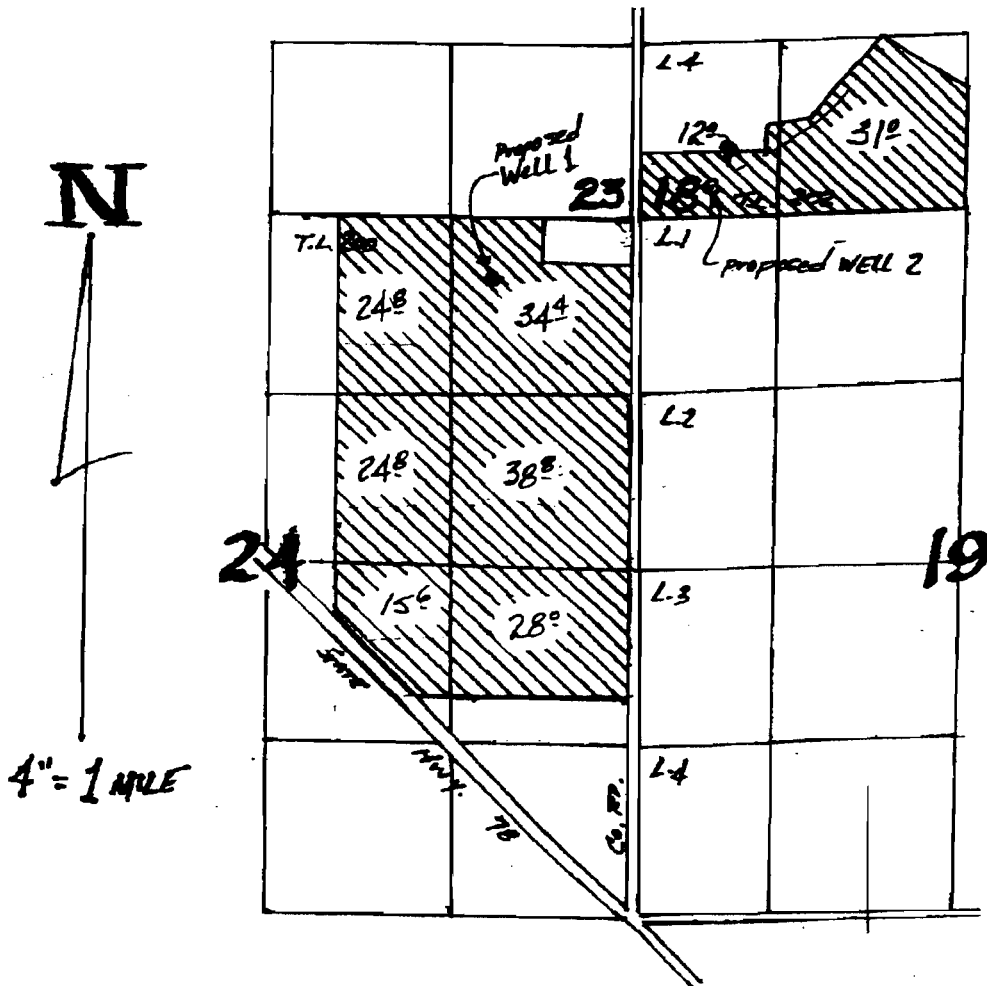
RECEIVED

APR 26 2012

WATER RESOURCES DEPT  
SALEM, OREGON

AMENDED JULY 6, 2009  
**APPLICATION MAP for**  
**STEVE RICKMAN**

**T. 23 S., R. 31 & 32 E., W. 4**



**RECEIVED**  
 JAN 28 2008  
 WATER RESOURCES DEPT  
 SALEM, OREGON

**RECEIVED**  
 APR 26 2012  
 WATER RESOURCES DEPT  
 SALEM, OREGON

WELLS LOCATED: #1-460' S. & 1120' W.; #2-280' N. & 520' E.;  
 both from NE Cor. Sec. 24.

**RECEIVED**

G16654

JUL 29 2009

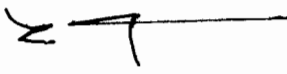
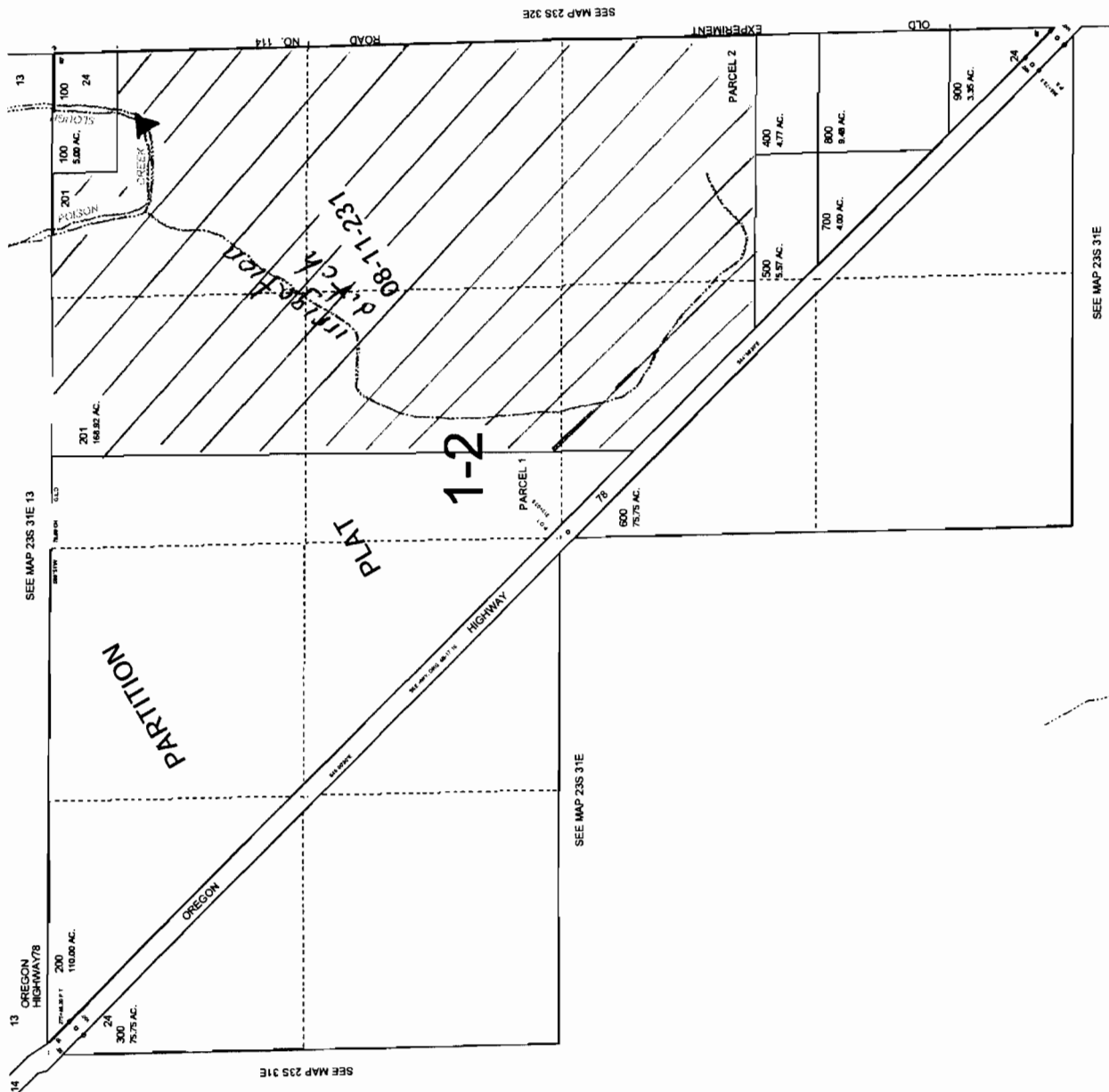
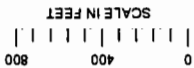
1011411

WATER RESOURCES DEPT  
 SALEM, OREGON

SECTION 24 T.23S. R.31E. W.M.  
HARNEY COUNTY

1" = 400'

THIS MAP WAS PREPARED FOR  
ASSESSMENT PURPOSE ONLY



G16654

RECEIVED

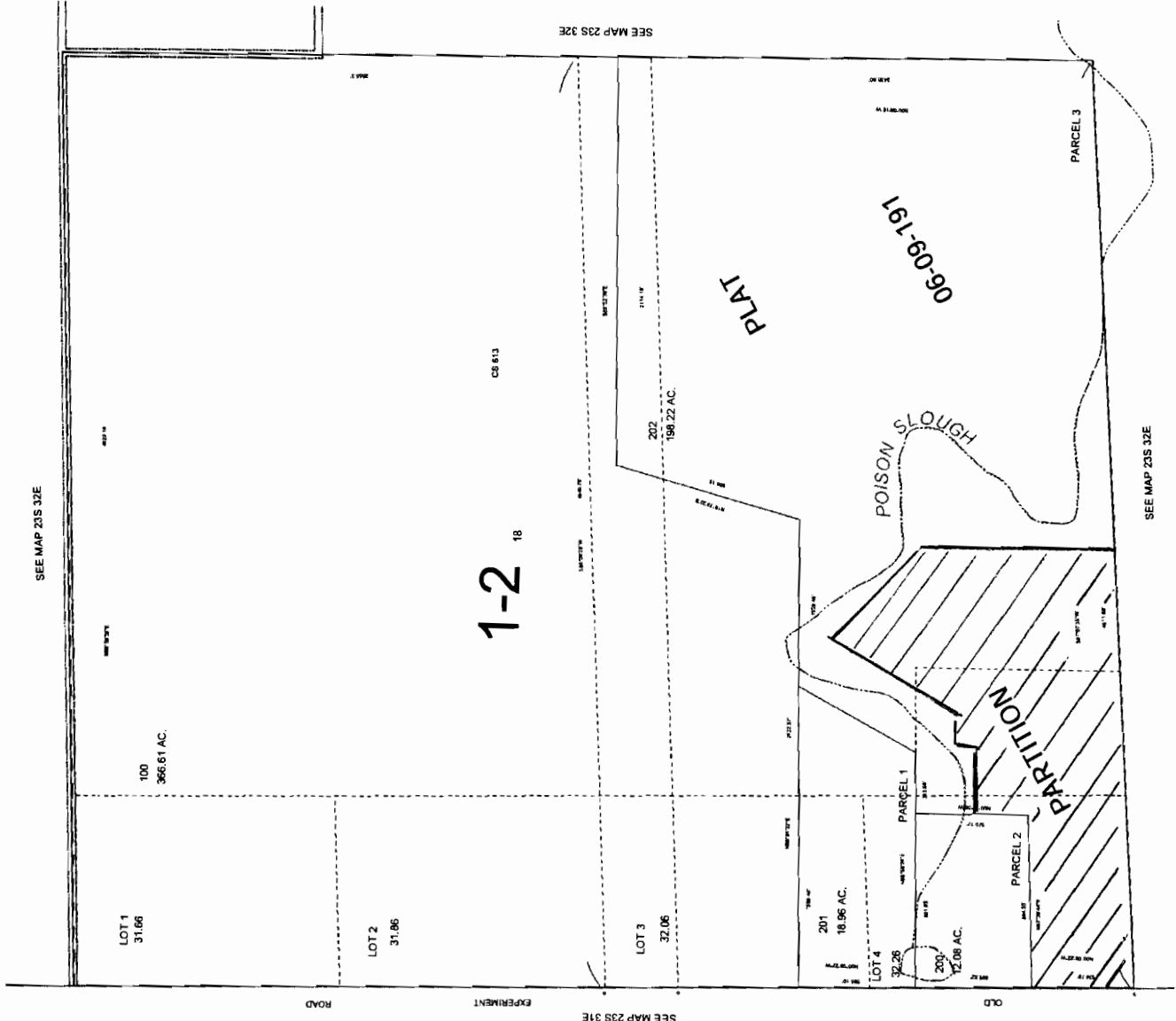
APR 26 2012

WATER RESOURCES DEPT  
SALEM, OREGON

1011411

**SECTION 18 T.23S. R.32E. W.M.**  
**HARNEY COUNTY**  
 1" = 400'

23S 32E 18

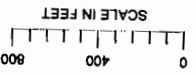


SEE MAP 23S 32E

SEE MAP 23S 32E

SEE MAP 23S 32E

THIS MAP WAS PREPARED FOR ASSESSMENT PURPOSE ONLY



G16654

**RECEIVED**

APR 26 2012

WATER RESOURCES DEPT  
 SALEM, OREGON

1011411