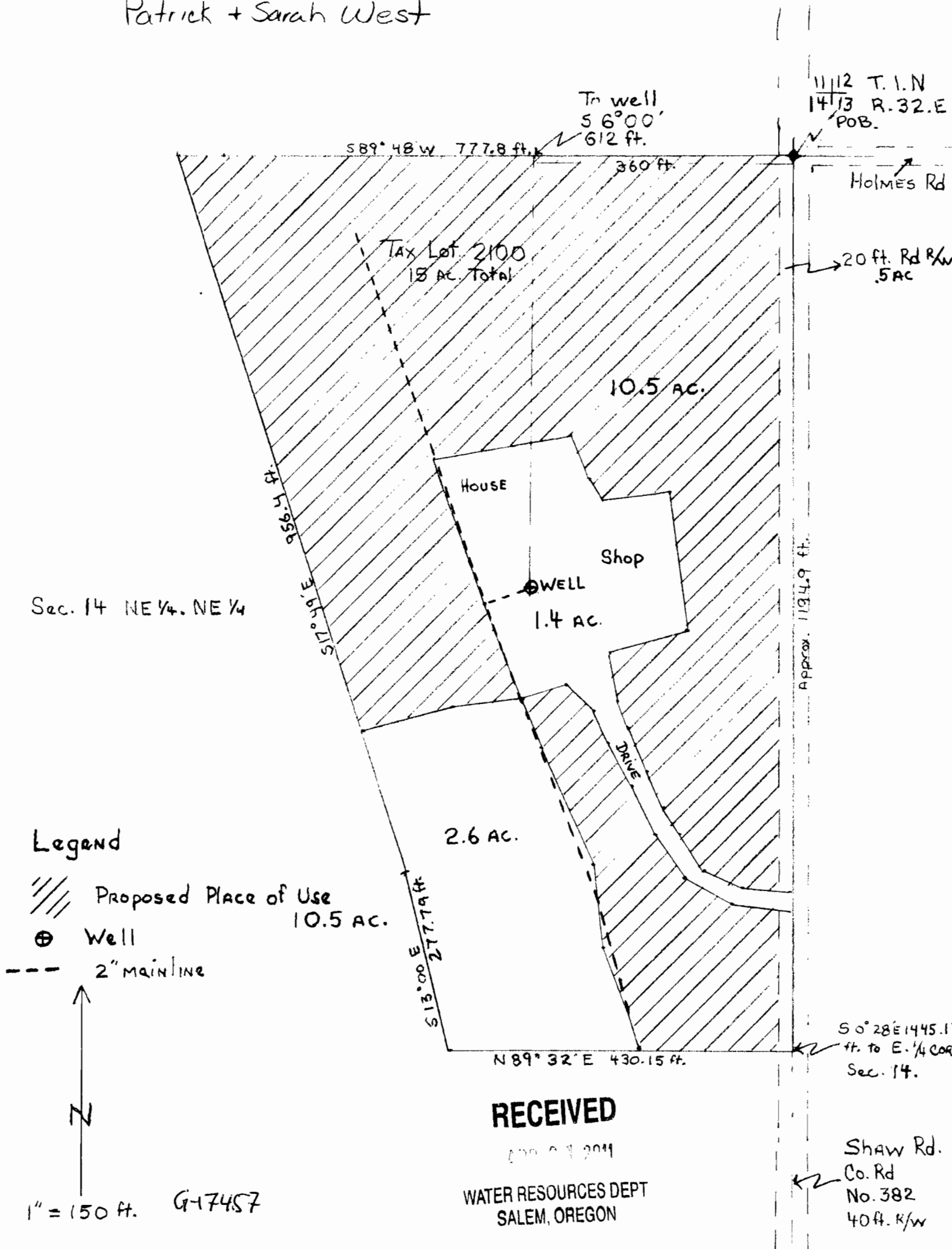


Patrick + Sarah West



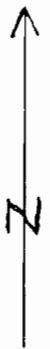
Sec. 14 NE 1/4, NE 1/4

Legend

//// Proposed Place of Use  
10.5 AC.

⊕ Well

--- 2" mainline



1" = 150 ft.

G-17457

RECEIVED

09 09 2011

WATER RESOURCES DEPT  
SALEM, OREGON

S 0° 28' E 1445.17  
ft. to E. 1/4 COR  
Sec. 14.

Shaw Rd.  
Co. Rd  
No. 382  
40 ft. R/W

k + Sarah West

CORRECTED ADJUSTED  
APPROX SCALE  
1" = 100 FEET

11/12 T.1.N  
14/13 R.32.E  
POB:

To well  
56°00'  
612 ft.

S89°48'W 777.8 ft.

360 ft.

Holmes Rd

Tax Lot 2100  
15 AC. Total

360 FT  
WEST

20 ft. Rd R/W  
5 AC

WORK  
COPY

10.5 AC.

HOUSE

612 FT  
SOUTH

Shop

WELL

1.4 AC.

DRIVE

2.6 AC.

Place of Use  
10.5 AC.

S13°00'E  
277.79 ft.

N89°32'E 430.15 ft.

APPROX 194.9 ft.

S0°28'E 1445.17  
ft. to E. 1/4 COR  
Sec. 14.

NE 1/4

956.4 ft.

S17°51'E

12

G-17457