



MAP # 2

APP

G-17397

RECEIVED

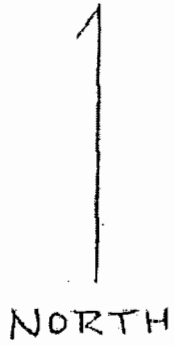
OCT 26 2011

WATER RESOURCES DEPT  
SALEM, OREGON

RECEIVED

JUN 04 2010

WATER RESOURCES DEPT  
SALEM, OREGON



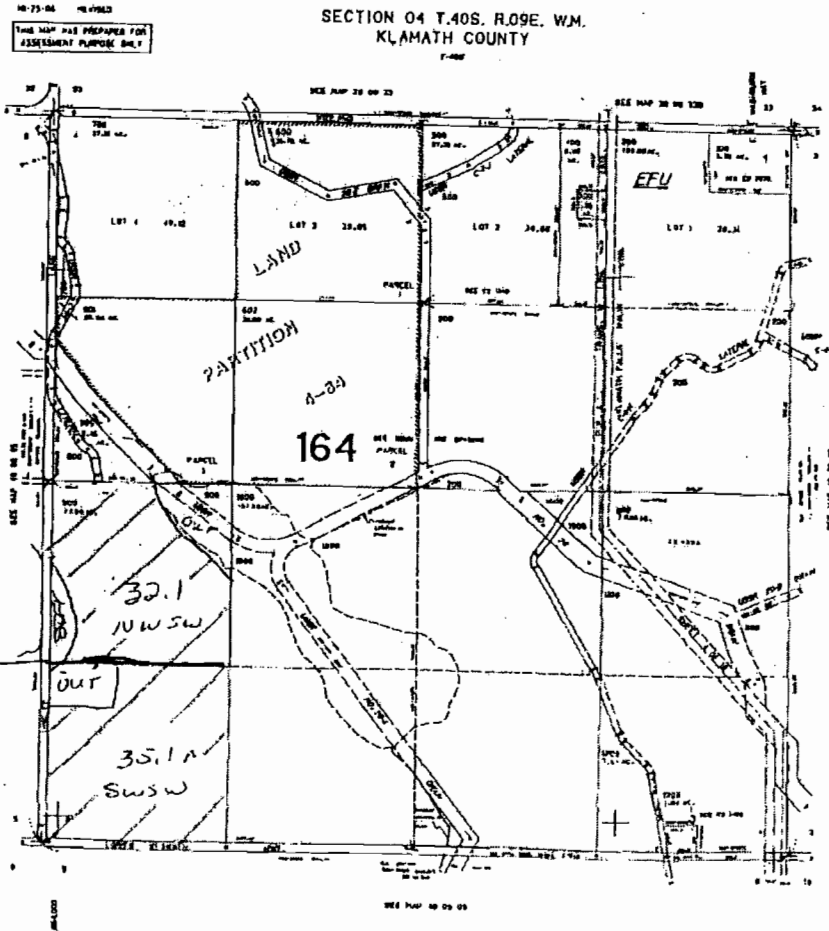
T-40 S. R09E  
SEC 4

TL 900

1" = 1320'

Wheel lines

main line



40 09 04

G-17397

40 09 04

MAP #3

THIS MAP WAS PREPARED FOR  
ASSESSMENT PURPOSE ONLY.

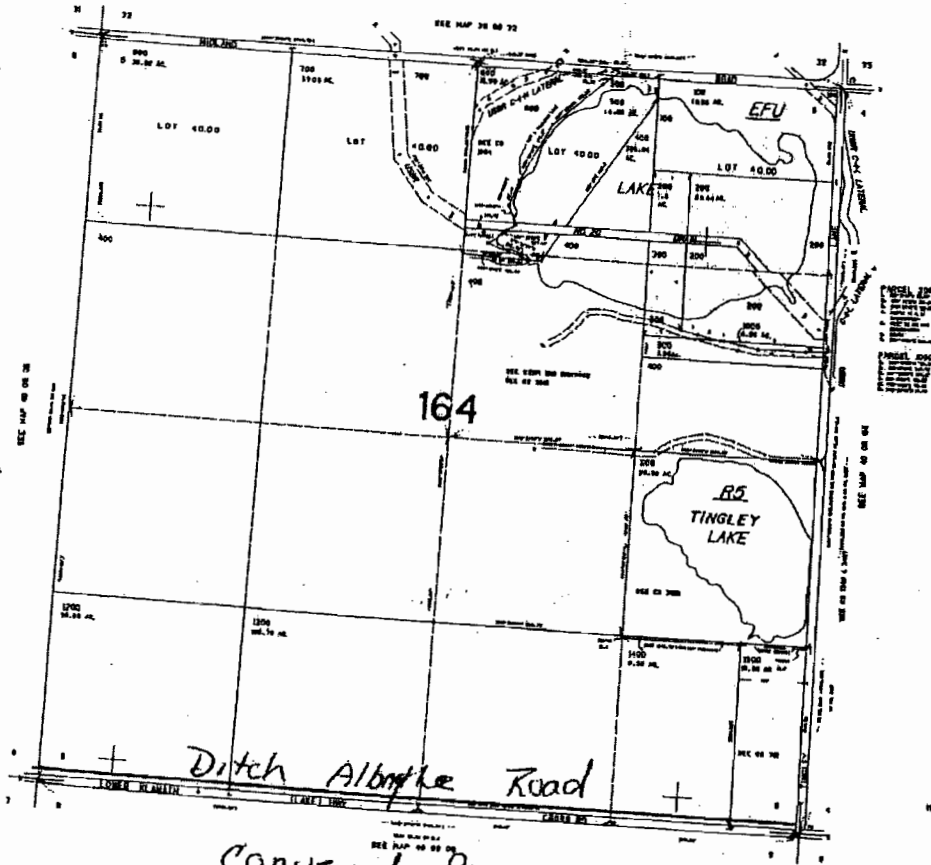
SECTION 05 T.40S. R.09E. W.M.  
KLAMATH COUNTY  
T-400

40 09 05

APP # 6-17397

NORTH

T40S R09E  
SEC. 5



Conveyed from  
Section 6 - to Sect 4  
Ditch along County Road

SCALE 1" = 1320'

RECEIVED

OCT 26 2011

WATER RESOURCES DEPT.  
SALEM OREGON