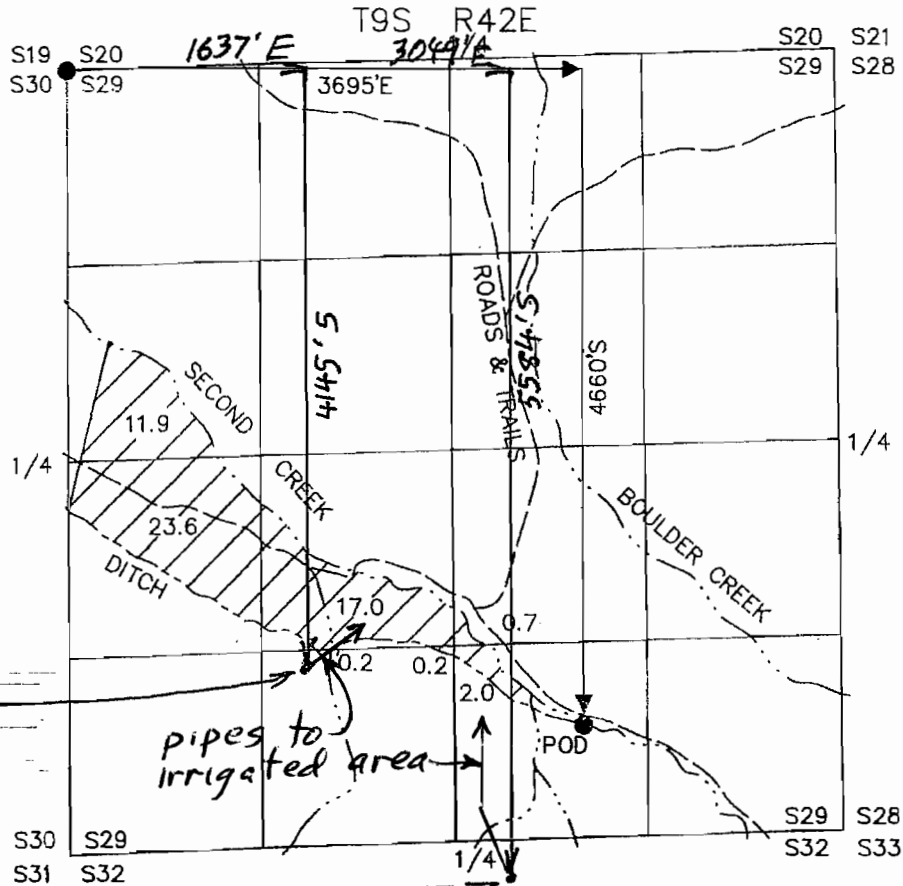


GROUND WATER APPLICATION MAP SUPPLEMENTAL TO PERMIT NO. 51735 VIRTUE FINANCIAL SOLUTIONS P.O. BOX 477 BAKER CITY OR 97814 PORTION OF TAX LOT 1200



SCALE: 1" = 1320'



WELL #1
ID L-54162
SC 145793
N 44.749290
W 117.599180

SC 206287
N 44.746180
W 117.594360
WELL #2 ID # L-107097

TABLE OF AREAS PER 1/4 IN SECTION 29, T 9S 42E

- SW 1/4 of NW 1/4, 11.9 Acres
- NW 1/4 of SW 1/4, 23.6 Acres
- NE 1/4 of SW 1/4, 17.0 Acres
- SE 1/4 of SW 1/4, 0.4 acres
- SW 1/4 of SE 1/4, 2.0 acres
- NW 1/4 of SE 1/4, 0.7 acres

RECEIVED
APR 13 2012
NAT. RESOURCES DEPT
SALEM, OREGON

~~G-7551~~
G-7551