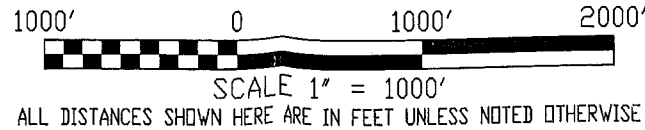


ACREAGES

(TAX LOT NUMBERS FROM ASSESSOR TAX MAP 19S43)

SECTION 11: (33.49 AC.)	SWSW 15.15 AC. TL3000 SESW 18.34 AC. TL3000
SECTION 12: (57.53 AC.)	NESW 2.54 AC. TL3000 NWSW 17.54 AC. TL3000 SWSW 31.50 AC. TL4000 SESW 5.95 AC. TL3000
SECTION 13: (351.48 AC.)	NWNE 6.79 AC. TL4400 SWNE 18.09 AC. TL4400 NENW 25.93 AC. TL3000 & 4400 NWNW 23.80 AC. TL3000 & 4500 SWNW 37.59 AC. TL4500 SENW 39.55 AC. TL4400 NESW 39.63 AC. TL4400 NWSW 39.63 AC. TL4500 SWSW 35.75 AC. TL4500 SESW 18.06 AC. TL4400 NESE 4.58 AC. TL4400 NWSE 39.16 AC. TL4400 SWSE 22.04 AC. TL4400 SESE 0.88 AC. TL4400

SECTION 14: (217.66 AC.)	NENE 0.29 AC. TL3000 SWNE 14.90 AC. TL3000 SENE 31.18 AC. TL 3000 & 4600 NENW 35.05 AC. TL3000 NWNW 30.50 AC. TL3000 SWNW 2.08 AC. TL3000 SENW 2.73 AC. TL3000 NESW 3.52 AC. TL3000 NESE 38.22 AC. TL4600 NWSE 33.96 AC. TL4500 SWSE 1.59 AC. TL4600 SESE 23.64 AC. TL4600
------------------------------------	---



RECEIVED

DLT 06 2011

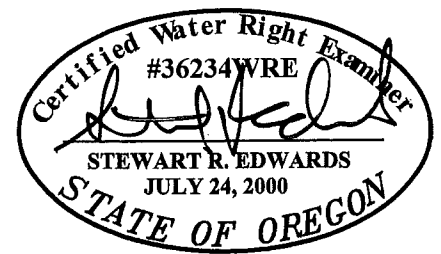
RESOURCES DEPT.
M. EM, OR 82011

PROPOSED WELL LOCATIONS

- WELL No. 1: 2300' SOUTH AND 175' EAST OF THE NW CORNER SECTION 13, T19S., R.43 E., W.M.
- WELL No. 2: 60' SOUTH AND 2245' EAST OF THE NW CORNER SECTION 13, T19S., R.43 E., W.M.
- WELL No. 3: 470' SOUTH AND 840' EAST OF THE NW CORNER SECTION 13, T19S., R.43 E., W.M.
- WELL No. 4: 3055' NORTH AND 1983 WEST OF THE SE CORNER SECTION 14, T19S., R.43 E., W.M.
- WELL No. 5: 1560' NORTH AND 1625 WEST OF THE SE CORNER SECTION 14, T19S., R.43 E., W.M.
- WELL No. 6: 1849' NORTH AND 1445 EAST OF THE SW CORNER SECTION 12, T19S., R.43 E., W.M.

LEGEND

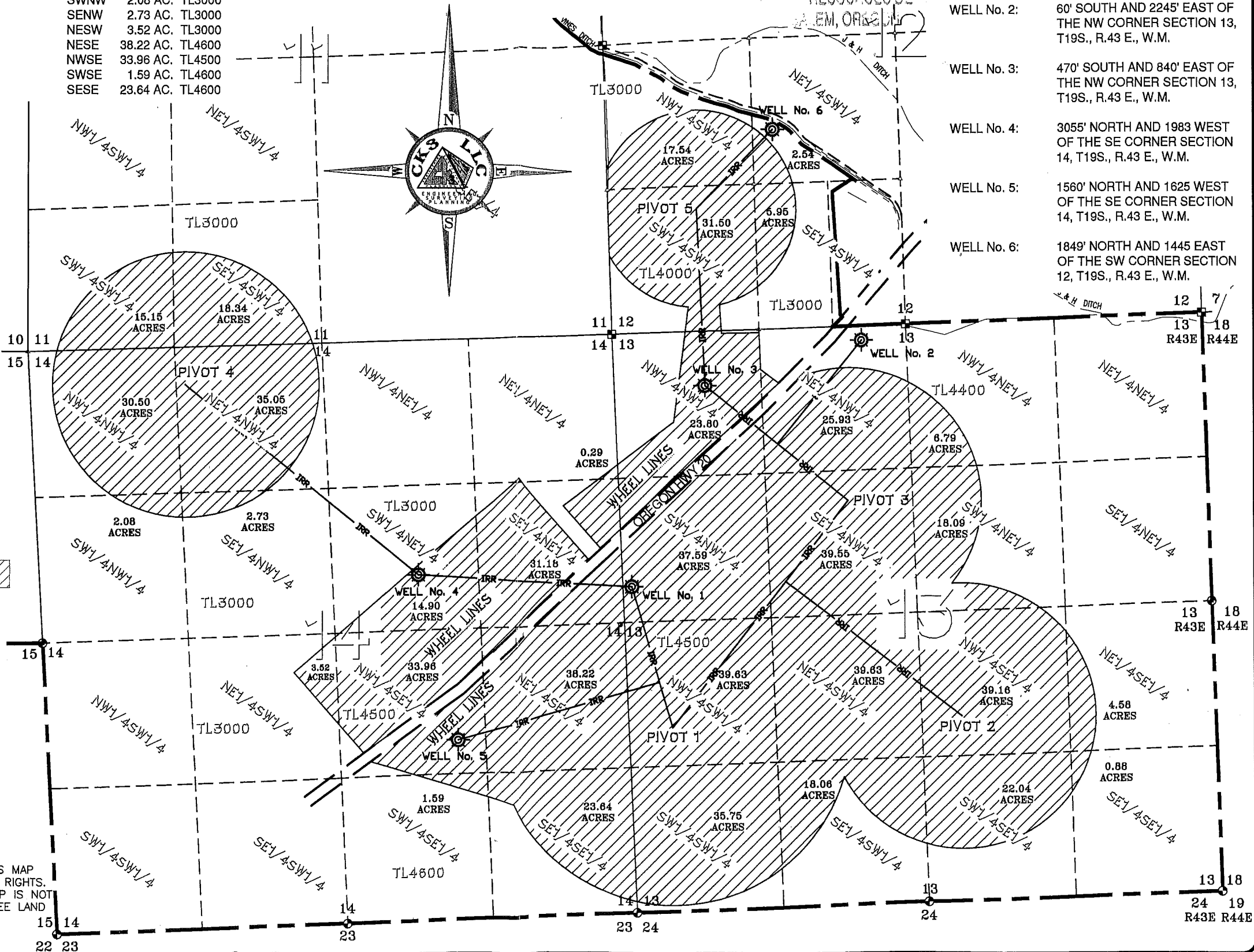
DISCRIPTION	SYMBOLS
SECTION LINE	---
QUARTER-QUARTER LINE	- - - -
PROPERTY LINE	---
CONCRETE DITCH	- - - -
CANAL	====
IRRIGATION PIPE	IRR --- IRR
SECTION CORNER	36 31 1 6
IRRIGATION WELL	☉
PROPOSED PRIMARY WATER RIGHT AREA	660.16 ACRES



DATE SEALED : 10.19.2010
CERTIFICATE RENEWAL : 12/31/11

DISCLAIMER

I, STEWART R. EDWARDS, HEREBY CERTIFY: THAT THIS MAP WAS MADE TO BE PART OF THE APPLICATION FOR WATER RIGHTS. SECTIONAL LINES SHOWN ARE APPROXIMATE AND THIS MAP IS NOT INTENDED FOR ANY OTHER USE AND DOES NOT GUARANTEE LAND OWNERSHIP.



ENG. BY:	STU
APR. BY:	STU
DWG. BY:	DKC
DATE:	AUG. 25, 2010

#	REVISION	DATE
01	Correct Well Callouts	10/18/10
02		
03		
04		

APPLICATION MAP
SEC. 11, 12, 13 & 14
T. 19S., R. 43E., W.M.
MALHEUR COUNTY, OREGON
FAITH LAND COMPANY, LLC
3716 EAST IDAHO ST., SUITE A
ELKO, NV 89801

CKS, LLC
368 S.W. 5th Avenue
Ontario, Oregon 97914
Phn: (541) 889-5411
Fax: (541) 889-2074
CIVIL-STRUCTURAL-ELECTRICAL
ENGINEERING, SURVEYING & PLANNING

WRI
SHEET: 1 OF 1
JOB: CO10014-A623

G-17420