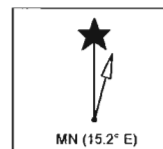


RECEIVED

MAY 01 2012

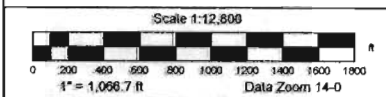
WATER RESOURCES DEPT
SALEM, OREGON



RECEIVED

DEC 19 2011

WATER RESOURCES DEPT
SALEM, OREGON



Data use subject to license.

© DeLorme. Topo North America™ 9.

www.delorme.com

Pivot Ordinations

	Distance from SE Corner Section 9
1 Rockchuck Well	6174 ft North and 1632 ft West
2 Dusty Flats Well 3962HN	Ft North and 427 ft East
3 Lizard Creek Well	4005 ft North and 701 ft East
4 Gravel Pit Pivot Well 1	3857 ft North and 615 ft East
5 Gravel Pit Pivot Well 2	1896 ft North and 123 ft East
6 Dirt Tank Well 2865N	ft North and 546 ft East

RECEIVED

DEC 19 2011
WATER RESOURCES DEPT
SALEM, OREGON

RECEIVED

MAY 01 2012
WATER RESOURCES DEPT
SALEM, OREGON