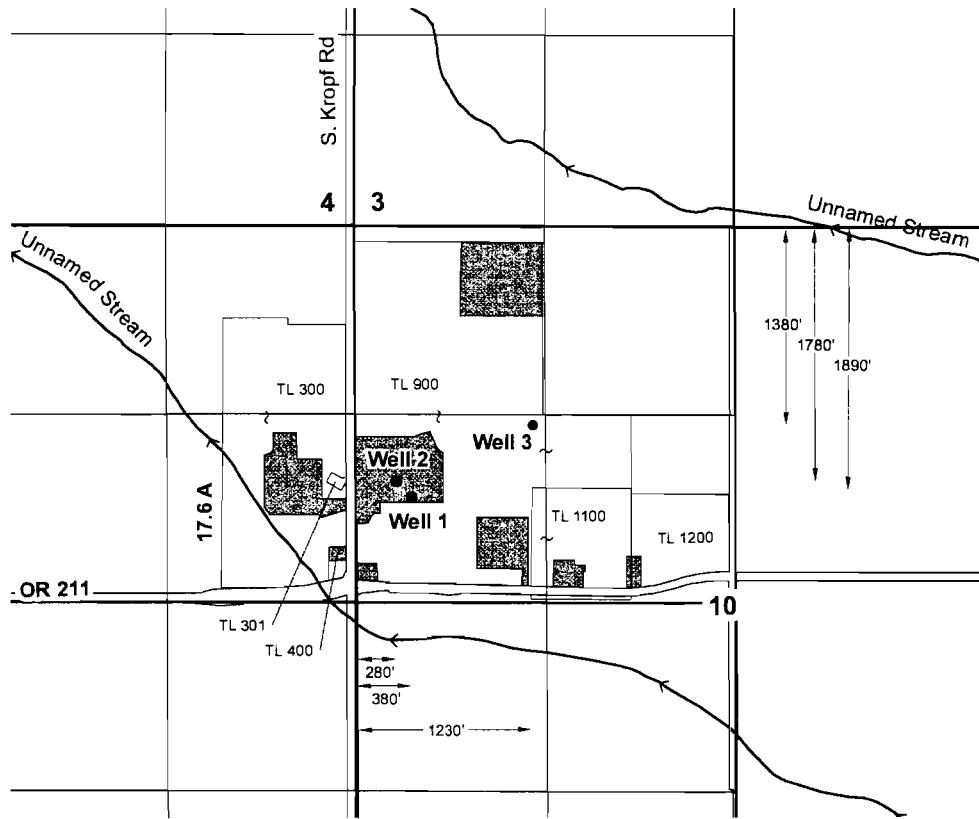


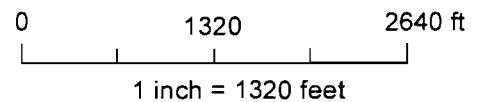
Township 5S, Range 1E, Sections 9 & 10 Clackamas County



RECEIVED BY OWRD

OCT 12 2012

SALEM, OR



Explanation

- Proposed Wells
- ▨ Proposed Commercial / Industrial Use

THIS MAP IS NOT INTENDED TO
PROVIDE LEGAL DIMENSIONS
OR LOCATIONS OF PROPERTY
OWNERSHIP LINES

Amended Groundwater Use Application Map
Willamette Egg Farms, LLC

Geosyntec[®] SKOOKUM
consultants WATER ASSOCIATES, LLC

Figure

1

Portland, OR

10-Oct-2012