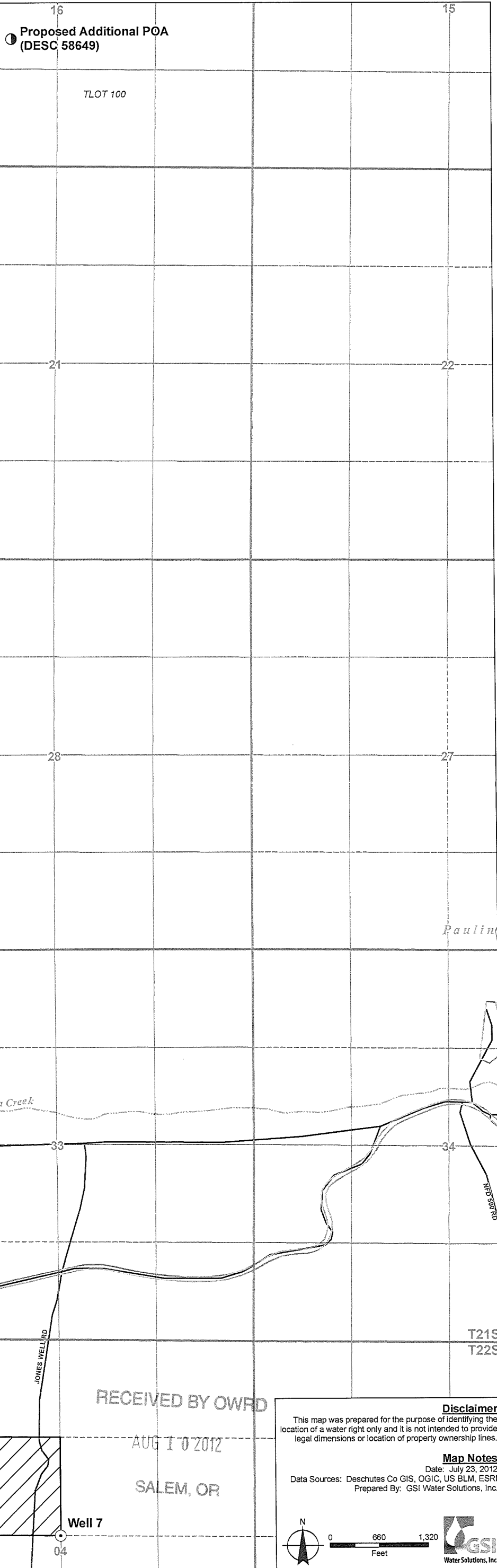


Permit Amendment Map
Proposed and Authorized Points of Appropriation
 Permit G-12571, Application G-13710
 Townships 21 and 22 South, Range 12 East (W.M.)



- LEGEND**
- Proposed Additional Point of Appropriation (POA)
 - ⊙ Authorized POA
 - ▨ Authorized Place of Use (POU)
 - Tax Lots
 - Roads
 - ~ Watercourses
 - ⊕ Waterbodies

POD Location Descriptions
Proposed Additional POA (DESC 58649)
 Located 1,725 feet North and 2,010 feet East from the SW corner of Section 16, Township 21 South, Range 12 East (W.M.)
Well 7
 Located 2,640 feet South and 2,640 feet East from the NW corner of Section 4, Township 22 South, Range 12 East (W.M.)

RECEIVED BY OWRD
 AUG 10 2012
 SALEM, OR

Disclaimer
 This map was prepared for the purpose of identifying the location of a water right only and it is not intended to provide legal dimensions or location of property ownership lines.

Map Notes
 Date: July 23, 2012
 Data Sources: Deschutes Co GIS, OGIC, US BLM, ESRI
 Prepared By: GSI Water Solutions, Inc.

0 660 1,320
 Feet

Permit Amendment Map
Proposed and Authorized Points of Appropriation
 Permit G-12595, Application G-13711
 Township 21 and 22 South, Range 12 East (W.M.)



LEGEND

- Proposed Point of Appropriation (POA)
- Authorized POA
- ▨ Authorized Place of Use (POU)
- Tax Lots
- Roads
- ~ Watercourses
- ☪ Waterbodies

POA Location Descriptions

Well 1 (Proposed)
 Located 2,050 feet North and 1,805 feet East from the SW corner of Section 21, Township 21 South, Range 12 East (W.M.)

Well 1 (Authorized)
 Located 1,980 feet South and 1,980 feet East from the NW corner of Section 21, Township 21 South, Range 12 East (W.M.)

Well 2
 Located 4,620 feet South and 4,620 feet East from the NW corner of Section 21, Township 21 South, Range 12 East (W.M.)

Well 3
 Located 4,620 feet North and 1,980 feet East from the SW corner of Section 28, Township 21 South, Range 12 East (W.M.)

Well 4
 Located 1,980 feet North and 3,300 feet East from the SW corner of Section 16, Township 21 South, Range 12 East (W.M.)

Well 5
 Located 1,980 feet South and 660 feet West from the NE corner of Section 20, Township 21 South, Range 12 East (W.M.)

Well 6
 Located 3,300 feet North and 660 feet West from the SE corner of Section 29, Township 21 South, Range 12 East (W.M.)

RECEIVED BY OWRD
 AUG 10 2012
 SALEM, OR

Disclaimer
 This map was prepared for the purpose of identifying the location of a water right only and it is not intended to provide legal dimensions or location of property ownership lines.

Map Notes
 Date: July 23, 2012
 Data Sources: Deschutes Co GIS, OGIC, US BLM, ESRI
 Prepared By: GSI Water Solutions, Inc.

0 1,000 2,000
 Feet

GSI
 Water Solutions, Inc.