

15571-19

1"=200'

ALL DISTANCES MEASURED FROM NW CORNER SECTION 23

WELL #1 870 ft EAST & 155 ft SOUTH

WELL #2 765 ft EAST & 120 ft SOUTH

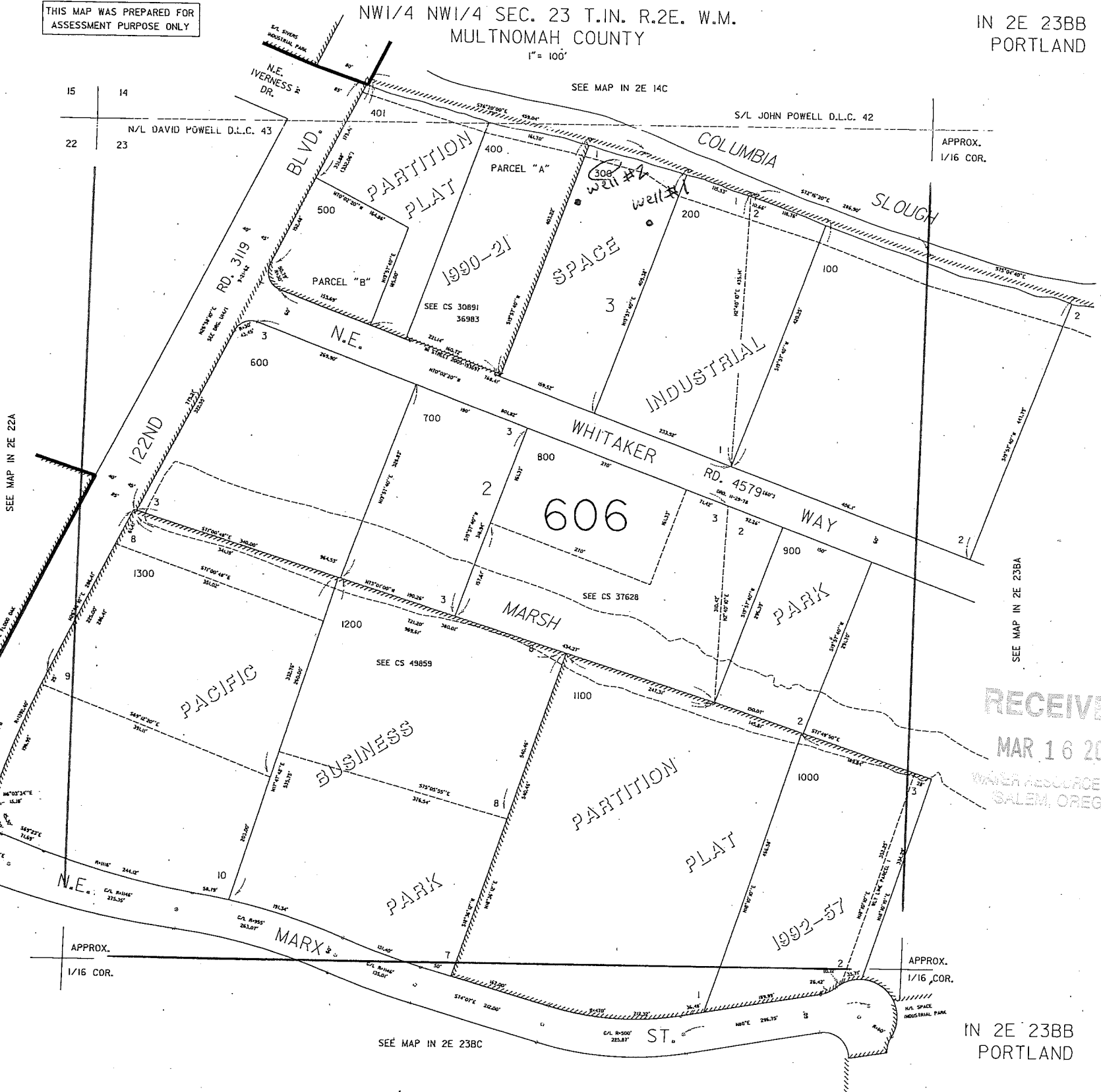
USED WITHIN TAX LOT 3.00  
GEOTHERMAL

THIS MAP WAS PREPARED FOR  
ASSESSMENT PURPOSE ONLY

NW1/4 NW1/4 SEC. 23 T.1N. R.2E. W.M.  
MULTNOMAH COUNTY

IN 2E 23BB  
PORTLAND

1" = 100'



APPROX.  
1/16 COR.

SEE MAP IN 2E 23BA

RECEIVED  
MAR 16 2011  
WATER RESOURCES DEPT  
SALEM, OREGON

APPROX.  
1/16 COR.

IN 2E 23BB  
PORTLAND