

T 17 S, R 4 W, Sec 14

RECEIVED

DEC 24 2012

WATER RESOURCES DEPT
SALEM, OREGON

SE 1/4 SW 1/4

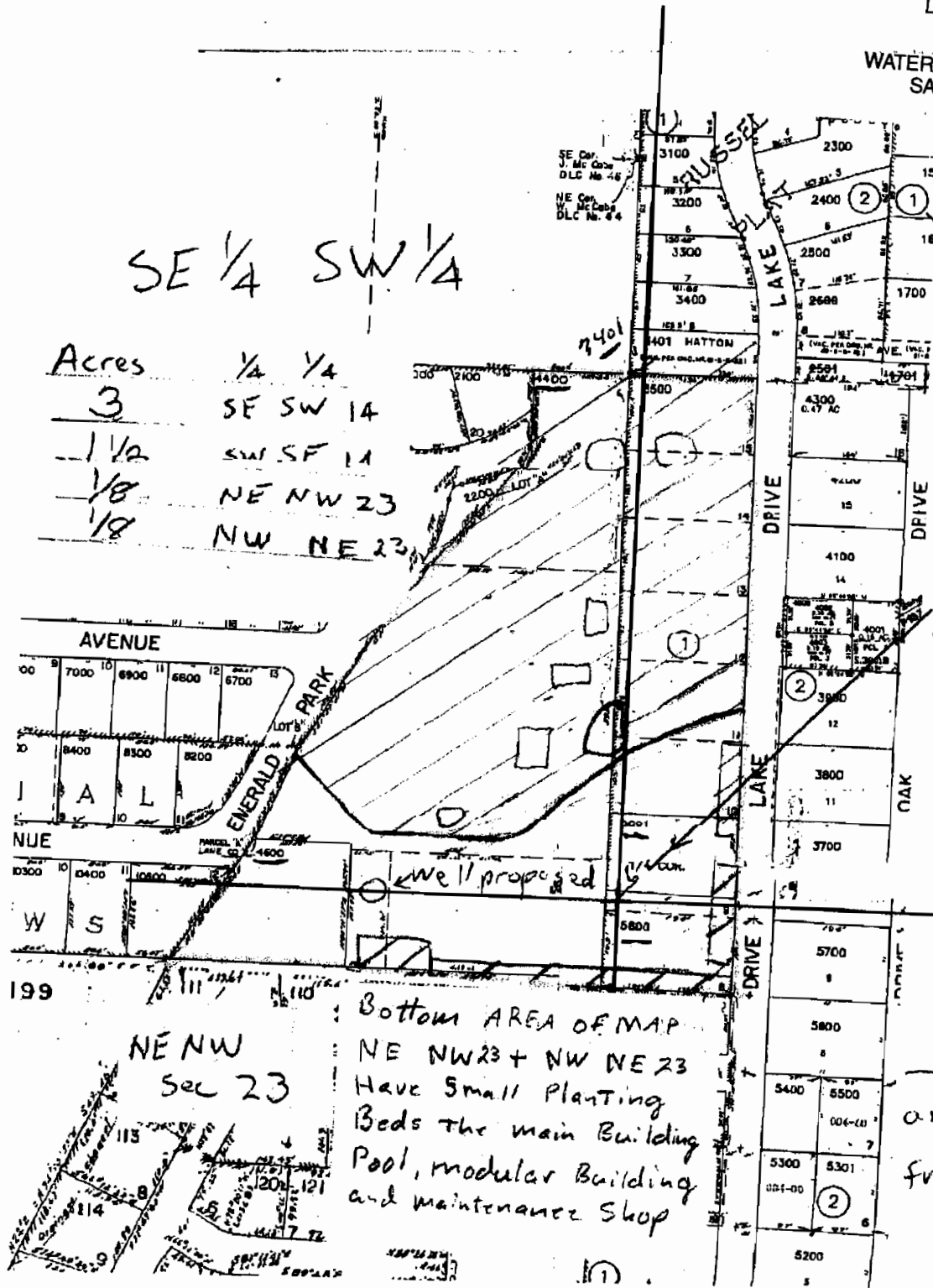
Acres	1/4	1/4
3	SE SW 14	
1 1/2	SW SE 14	
1/8	NE NW 23	
1/8	NW NE 23	



1" = 200'

S 1/4 Cor
Sec 14

SW SE



Bottom AREA OF MAP
NE NW 23 + NW NE 23
Have Small Planting
Beds the main Building
Pool, modular Building
and maintenance Shop

Well is
0' South
and 300' West
from S 1/4 Cor
sec 14