

SECTION PLAT

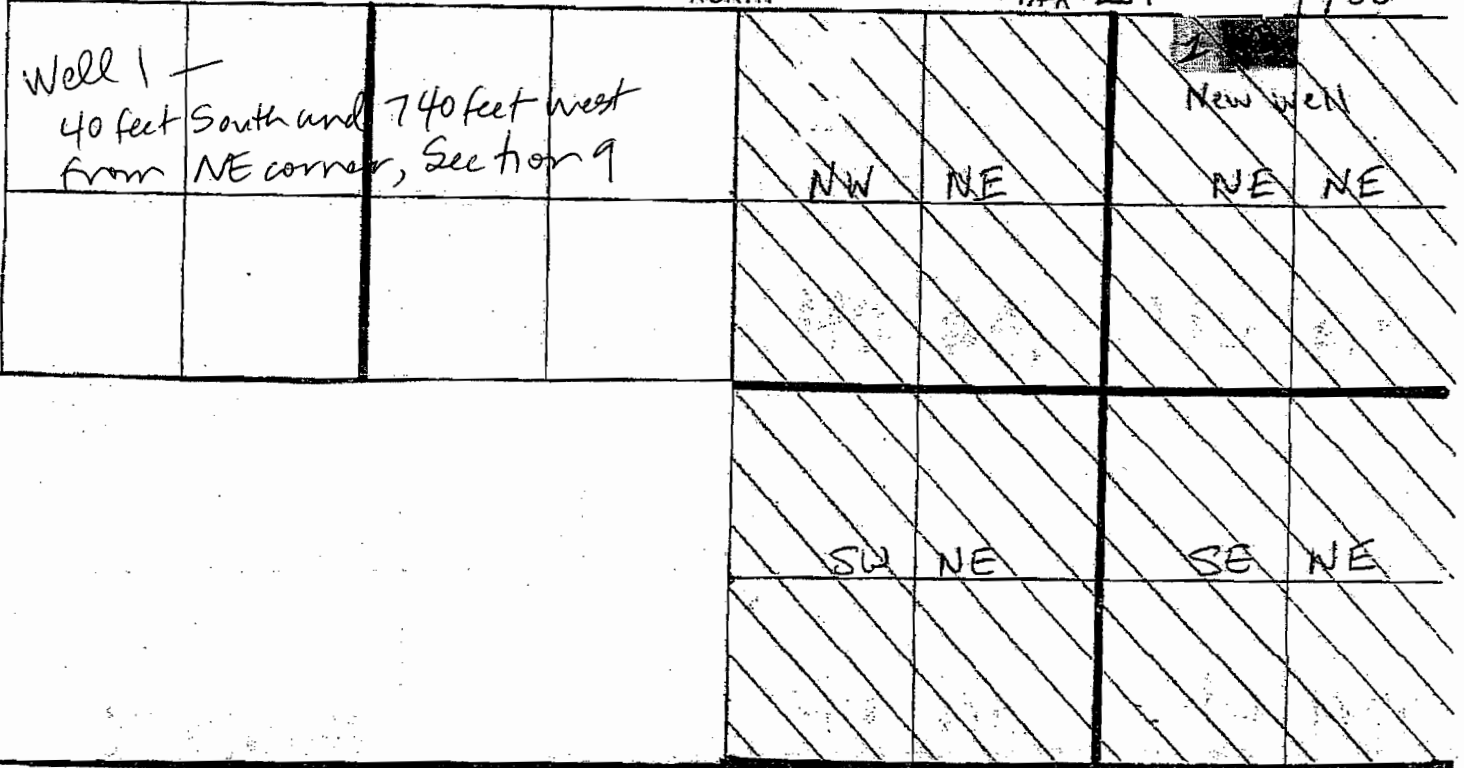
Section 9 Township 26S Range 31EN
 County of Harney State of Oregon

NORTH

TAX Lot

1700

Well 1 —
 40 feet South and 740 feet west
 from NE corner, Section 9



9

RECEIVED BY OWRD

RECEIVED

AUG 30 2012

APR 04 2013

SALEM, OR

WATER RESOURCES DEPT
 SALEM, OREGON

RECEIVED

JUN 23 2012

WATER RESOURCES DEPT
 SALEM, OREGON

App G-17578

4" = 1/4 mile

SECTION PLAT

Section 4 Township 26S Range 31EN
County of HARNEY State of Oregon

NORTH Tax Lot 700

Well 2 - 20 feet north and
1425 feet east from
SW corner, Section 4

RECEIVED

APR 04 2013

WATER RESOURCES DEPT
SALEM, OREGON

RECEIVED BY OWRD

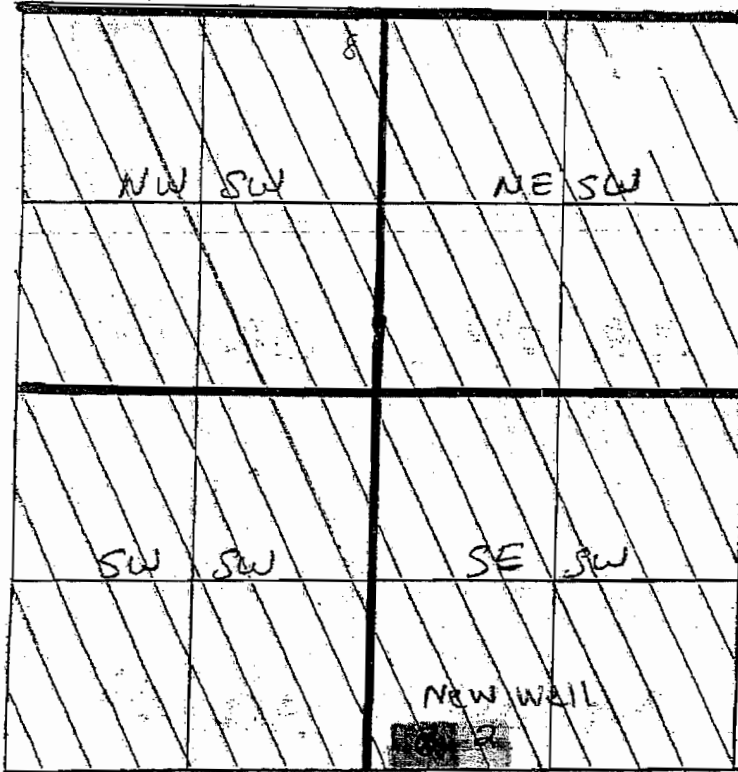
AUG 30 2012

SALEM, OR

RECEIVED

JUN 23 2012

WATER RESOURCES DEPT
SALEM, OREGON



App G-17578

4" = 1/4 mile