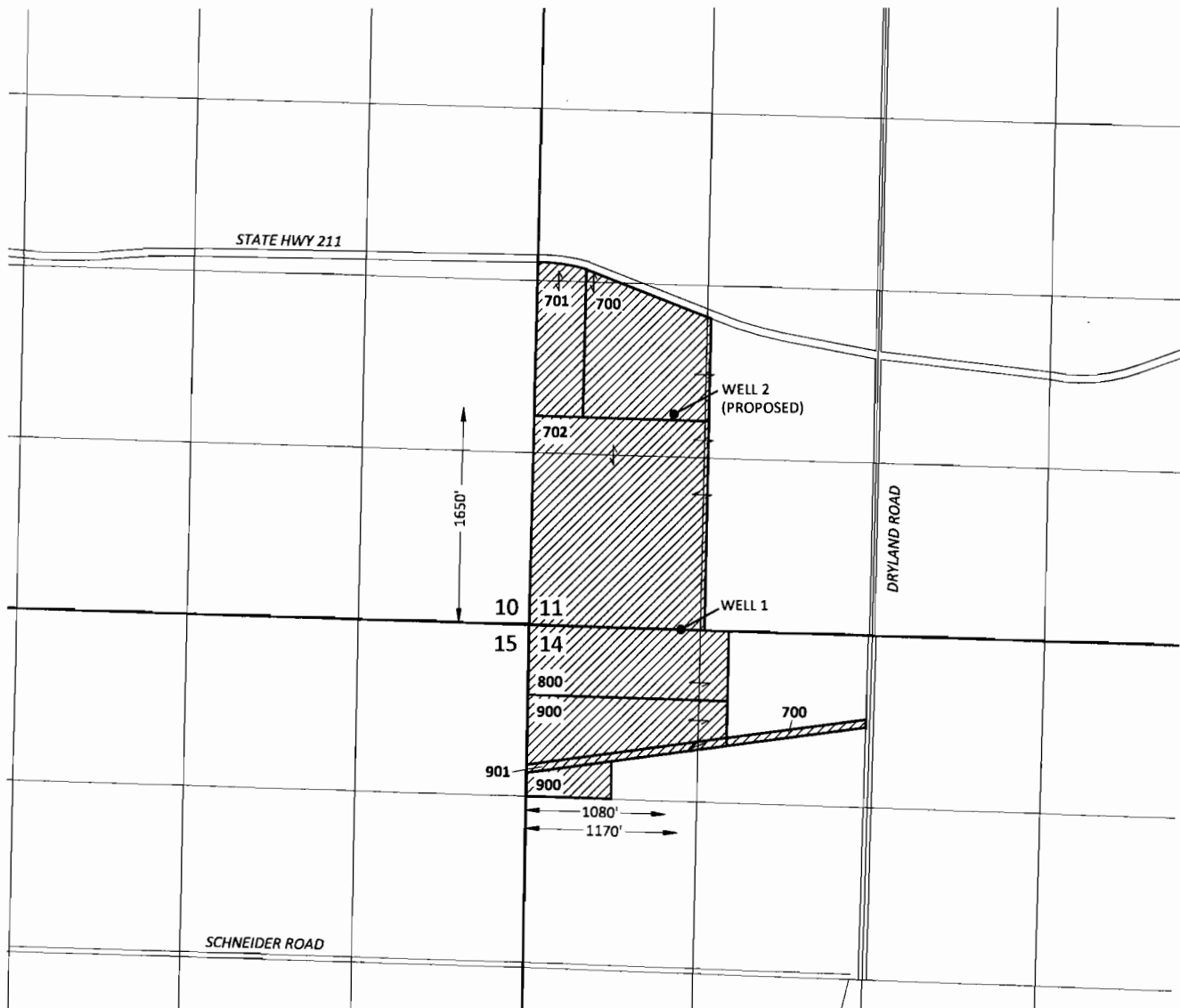


SECTIONS 11 & 14, T5S, R1E, W.M.
CLACKAMAS COUNTY



EXPLANATION

• WELL

RECEIVED

JAN 24 2013

WATER RESOURCES DEPT
SALEM, OREGON

DECEMBER 6, 2012

THIS MAP IS NOT INTENDED TO PROVIDE
LEGAL DIMENSIONS OR LOCATIONS OF
PROPERTY OWNERSHIP LINES

SKOOKUM
WATER ASSOCIATES INC

P.O. BOX 80174
PORTLAND, OR 97280
(503) 319-8926

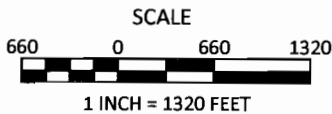


FIGURE 1
Willamette Egg Farms
Application Map

G-17624