

✓  
✓

BOOTH - 10

Wells Loc:

- #1 - 350 feet N & 1300 feet west from the SE corner Section 6
- #2 - 350 feet N & 2600 feet west from the SE corner Section 6
- #3 - ~~350~~ 600 feet South and 2600 feet West from the SE corner Section 6
- #4 - 1300 feet South and 2700 feet west from the SE corner Section 6
- #5 - 2000 feet South and 300 feet west from the

Well #6 - 3900 feet South and 3200 feet West from the SE corner of Section T41 S, R12 E, W. 11.

RECEIVED

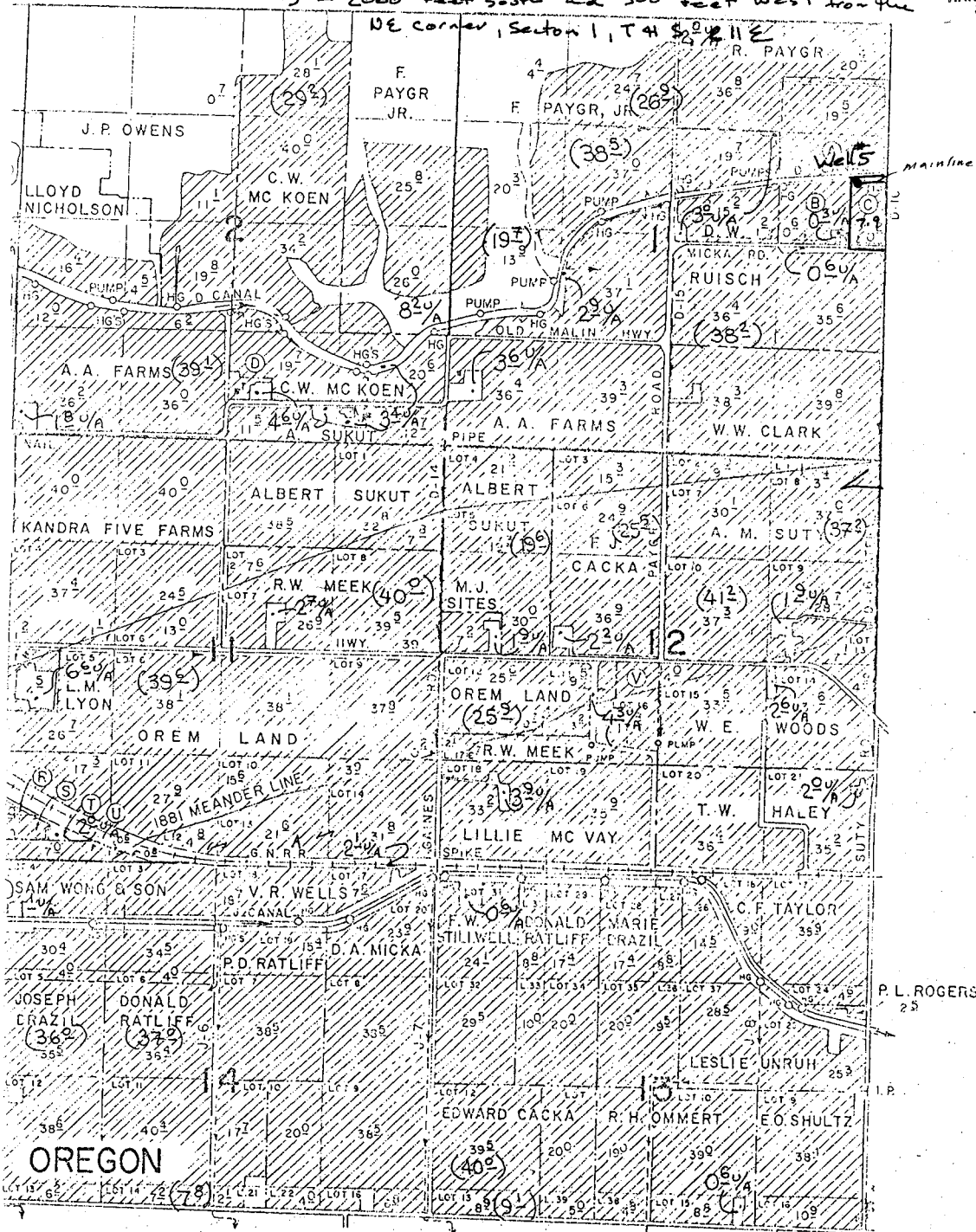
JUN 28 2001

WATER RESOURCES DEPT.  
SALEM, OREGON

RECEIVED  
FEB 14 2002

RECEIVED  
FEB 14 2002

WATER RESOURCES DEPT.  
SALEM, OREGON



CALIFORNIA

Application No 9,550  
Permit No. G-15407

(34.5) Indicates corrected acreage for the area  
34.5 u/a Indicates unirrigated acreage under contract

T41 S R12 E

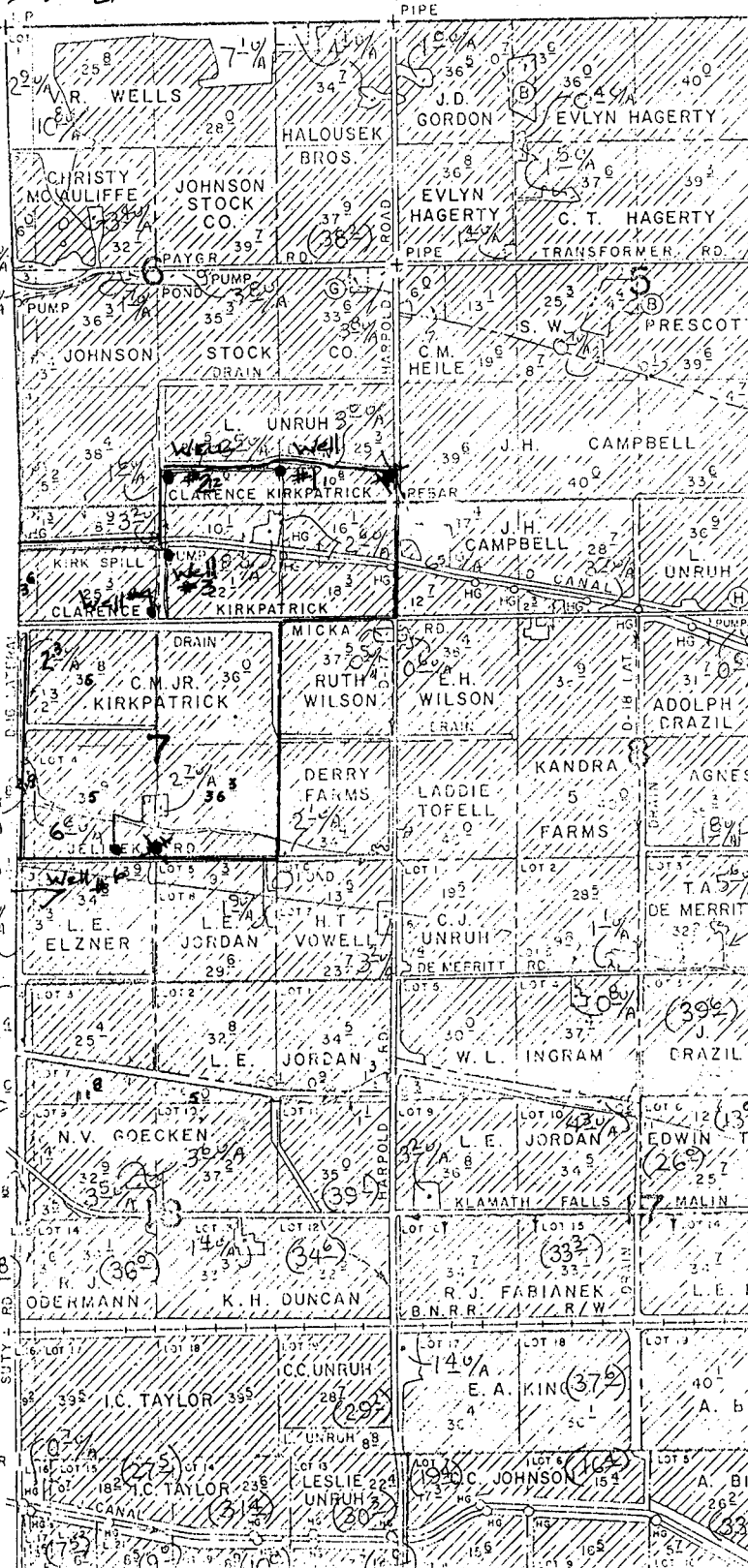
RECEIVED

JUN 28 2001

WATER RESOURCES DEPT.  
SALEM, OREGON

- © R. T. PARKER 8<sup>8</sup>
- © K. S. GENTRY 7<sup>0</sup>
- © RUBY GORDON 12<sup>3</sup>
- © A. J. PRESCOTT 1<sup>7</sup>
- © JOHN GUTHRIE 0<sup>3</sup>

MATCH  
LINE



Mainlines

(4L)

(6°)

Application No. 95550  
Permit No. G. 95407

(36°)

(34°)

(39°)

(33°)

RECEIVED  
FEB 14 2002  
WATER RESOURCES DEPT.  
SALEM, OREGON