

CUNNINGHAM SHEEP WEST BIRCH CREEK RANCH

GROUND WATER APPLICATION MAP #1

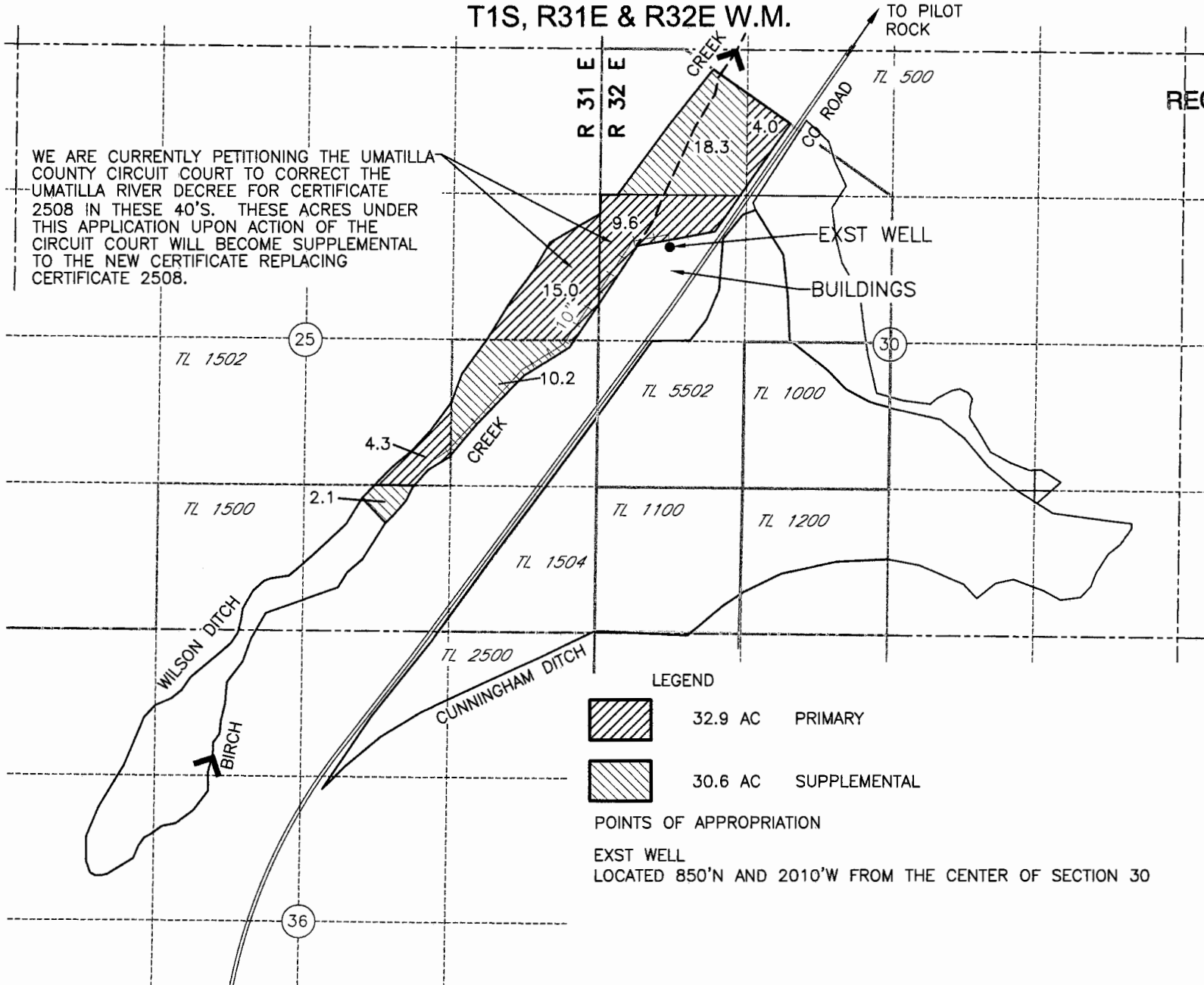
T1S, R31E & R32E W.M.

RECEIVED BY OWRD

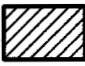
MAR 25 2013


SALEM, OR

WE ARE CURRENTLY PETITIONING THE UMATILLA COUNTY CIRCUIT COURT TO CORRECT THE UMATILLA RIVER DECREE FOR CERTIFICATE 2508 IN THESE 40'S. THESE ACRES UNDER THIS APPLICATION UPON ACTION OF THE CIRCUIT COURT WILL BECOME SUPPLEMENTAL TO THE NEW CERTIFICATE REPLACING CERTIFICATE 2508.



LEGEND

 32.9 AC PRIMARY

 30.6 AC SUPPLEMENTAL

POINTS OF APPROPRIATION

EXST WELL
LOCATED 850'N AND 2010'W FROM THE CENTER OF SECTION 30

N

0 500 1000

SCALE IN FEET

JUB

J-U-B ENGINEERS, INC.

G-1760