

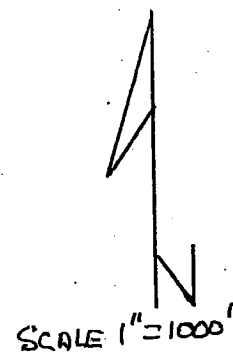
IMPORTANT  
This Map for Assessment  
and Taxation Purposes  
ONLY

SEC. 6 T8S R5W WM  
POLK COUNTY

Scale 1" = 400'

8.5.6

6-17-26



Canceled No.

- 102
- 104
- 106
- 108
- 109
- 113
- 200
- 201
- 202
- 209
- 204
- 208
- 280
- 281
- 282
- 300
- 401
- 402
- 500
- 600
- 801
- 803
- 805
- 1100
- 1200
- 1304
- 1307
- 1501
- 1502
- 1801

TANKS  
RESERVOIR  
(TWO CONNECTED  
ABOVE-GROUND  
TANKS)  
2600' NORTH  
1650' WEST  
FROM SE  
CORNER  
SECTION 6

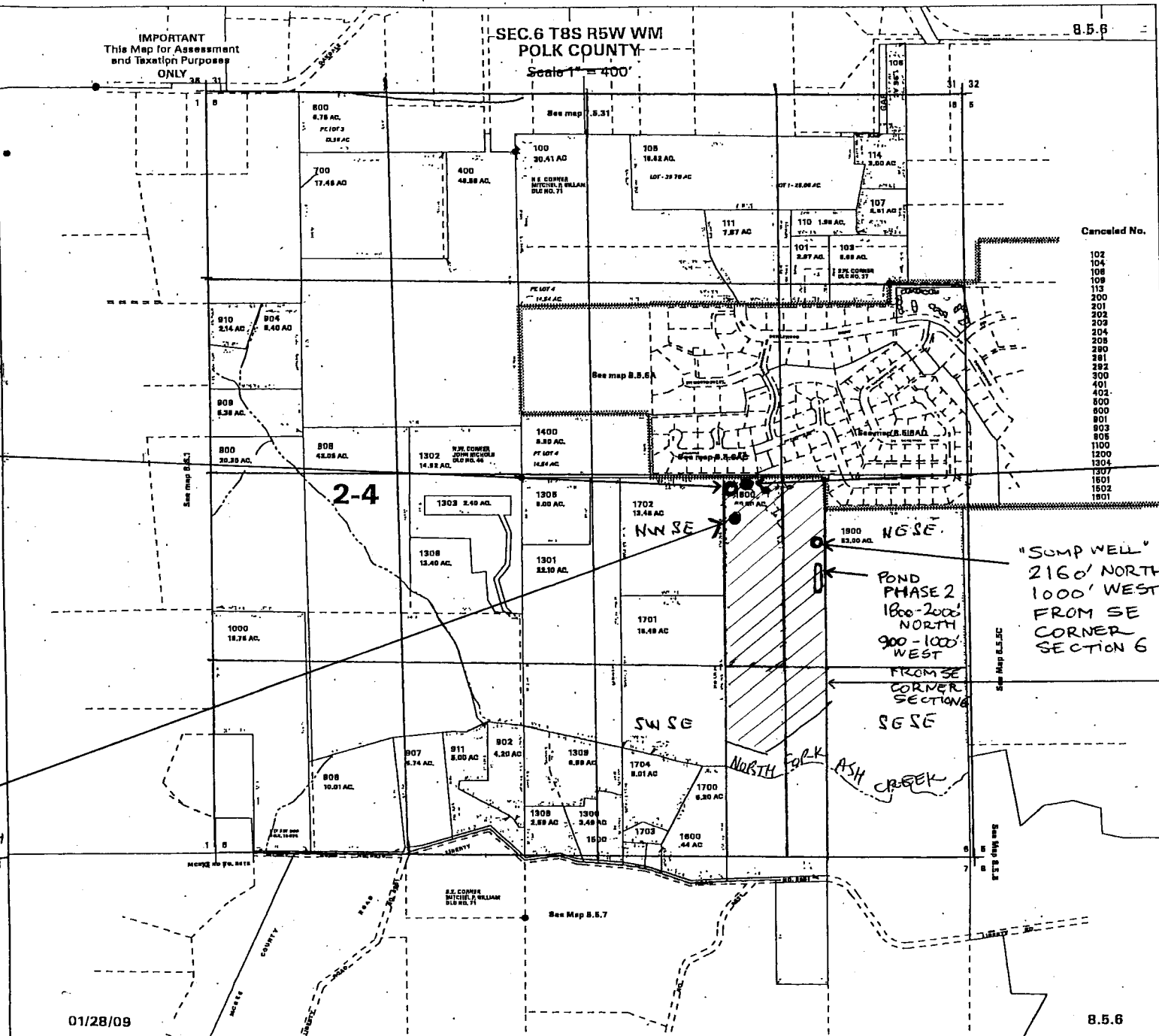
"SOUTH WELL"  
POLK 53022  
2350' NORTH  
1640' WEST  
FROM SE  
CORNER  
SECTION 6

"NORTH WELL"  
POLK 53096  
2600' NORTH  
1600' WEST  
FROM SE  
CORNER  
SECTION 6

"SUMP WELL"  
2160' NORTH  
1000' WEST  
FROM SE  
CORNER  
SECTION 6

POND  
PHASE 2  
1800-2000'  
NORTH  
900-1000'  
WEST  
FROM SE  
CORNER  
SECTION 6

SHADED  
AREA =  
30 ACRES  
PRIMARY  
ACRES  
TO BE  
IRRIGATED



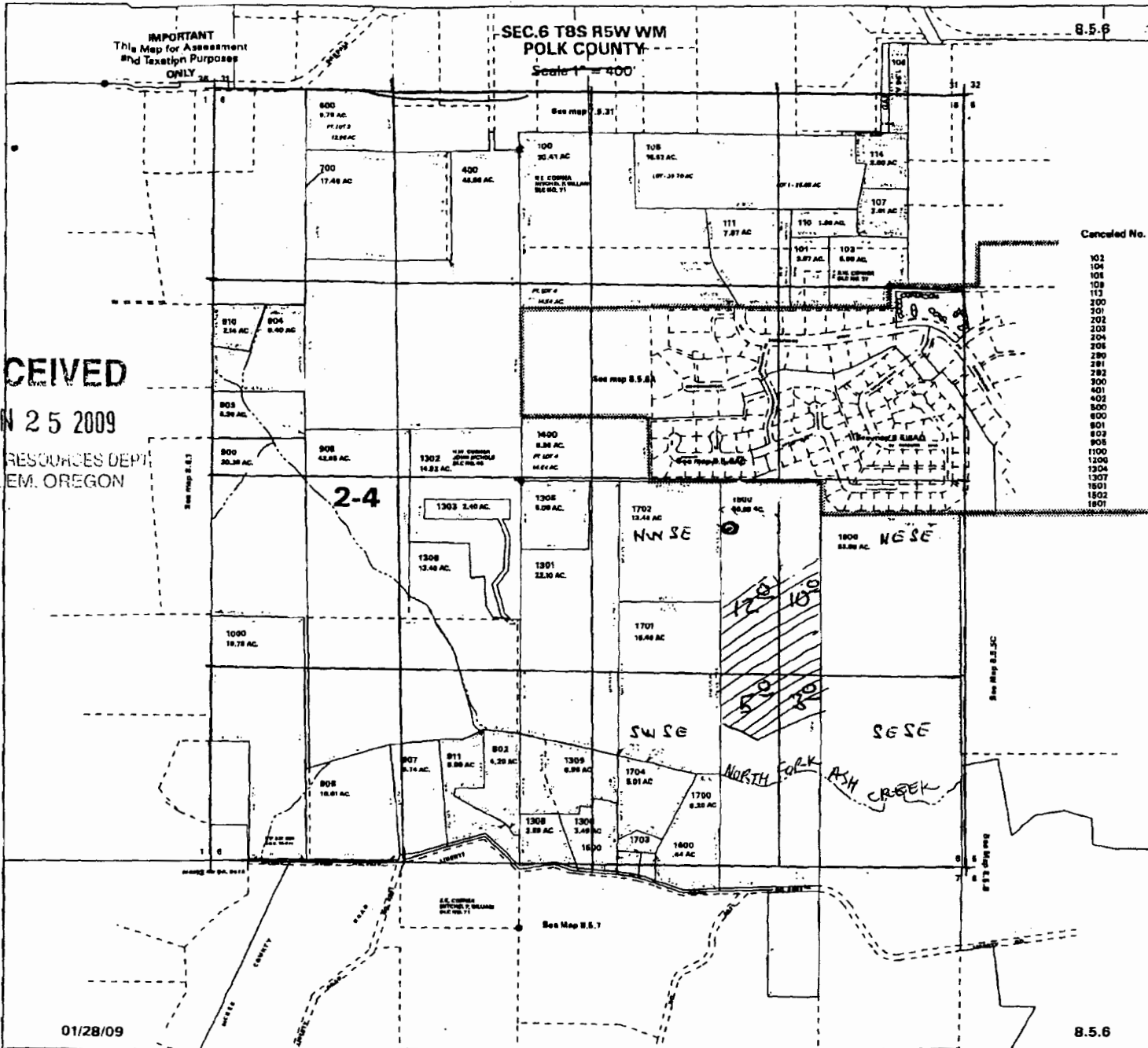
01/28/09

8.5.6

RECEIVED BY OWRD

FEB 06 2013

SALEM, OR



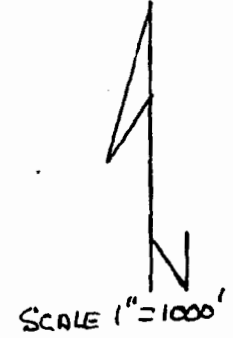
**IMPORTANT**  
This Map for Assessment  
and Taxation Purposes  
ONLY

**SEC. 6 T85 R5W WM  
POLK COUNTY**  
Scale 1" = 400'

8.5.6

Canceled No.

- 103
- 104
- 108
- 109
- 113
- 200
- 201
- 202
- 203
- 204
- 208
- 280
- 281
- 282
- 300
- 401
- 402
- 800
- 800
- 801
- 802
- 805
- 1100
- 1200
- 1304
- 1307
- 1501
- 1502
- 1507



**UPDATED**  
Proposed Well  
LOCATED  
2310' NORTH  
1640' WEST  
FROM SE CORNER  
SECTION 6.

**RECEIVED**

NOV 18 2009

WATER RESOURCES DEPT  
SALEM, OREGON

**RECEIVED**  
JUN 25 2009  
WATER RESOURCES DEPT  
SALEM, OREGON

ADDED TO FILE  
4/27/2013  
6-17289

BC