

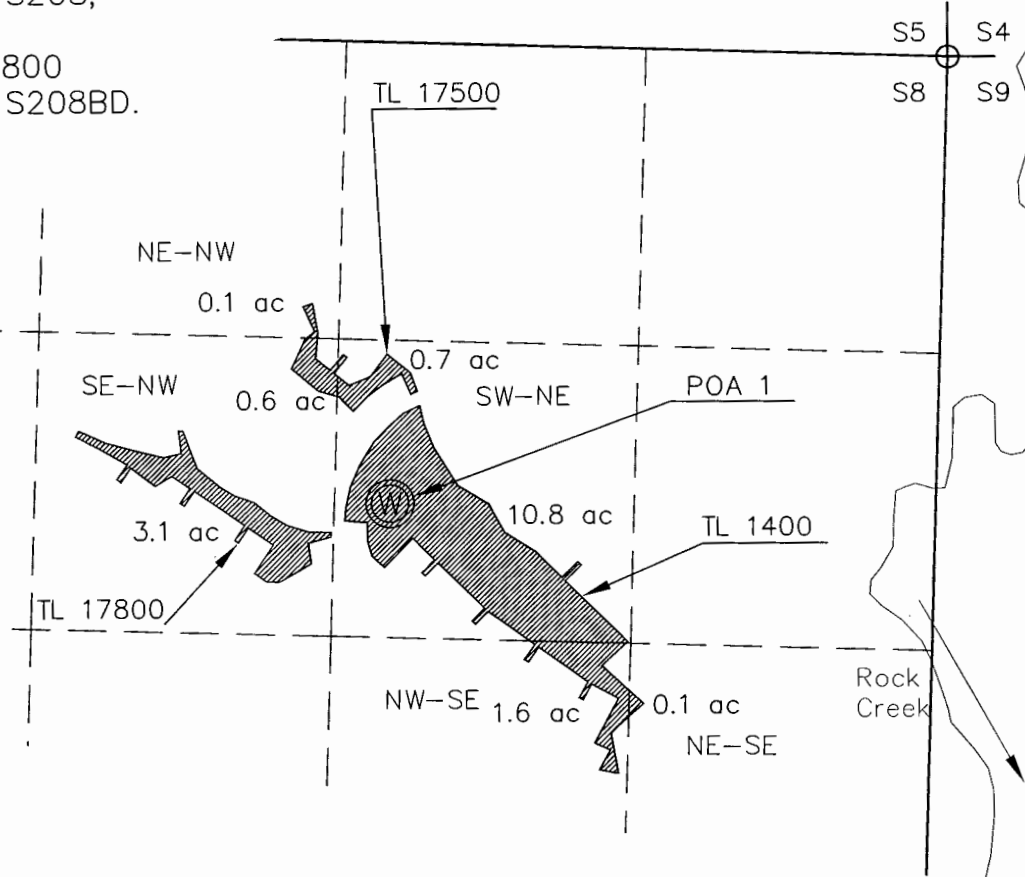
# WATER RIGHTS APPLICATION MAP

Section 8, T1S, R2W, WM  
WASHINGTON COUNTY, OREGON  
WILLAMETTE RIVER BASIN

PREPARED FOR:  
Edwards Meadows HOA  
PO Box 33  
Hillsboro, OR 97123



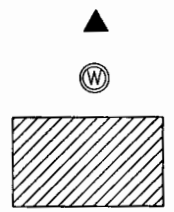
Tax Lots (TL):  
1400  
of Tax Map 1S208;  
  
17,500 & 17,800  
of Tax Map 1S208BD.



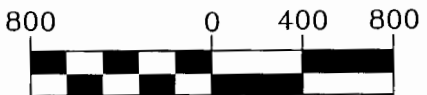
**RECEIVED**  
JUL 09 2012

WATER RESOURCES DEPT  
SALEM, OREGON

### LEGEND



▲ DLC CORNER  
⊙ WELL LOCATED 1970' SOUTH AND 2450' WEST OF THE NW COR. OF SECTION 8.  
NE updated by WRD per direction from Agent. JC 7/10/2012  
▨ PROPOSED IRRIGATION AREA



1 inch = 800 ft.



Z:\Support\Stunt1.tif

NOTE:  
THE PIPELINES LOCATIONS ARE NOT KNOWN, BUT ARE WELL WITHIN THE EDWARDS MEADOWS SUBDIVISIONS THAT ARE SERVED BY THE EDWARDS MEADOWS HOA, THE FUTURE RIGHT HOLDER.

THIS MAP WAS PREPARED FOR THE PURPOSE OF IDENTIFYING THE LOCATION OF A WATER RIGHT ONLY AND IS NOT INTENDED TO PROVIDE LEGAL DIMENSIONS OR LOCATION OF PROPERTY OWNERSHIP LINES.

Project: 312-2-025  
Drawing: 312025E.dwg  
By: EAU  
Checked by: EAU  
Date: 20JUN2012

G-17569