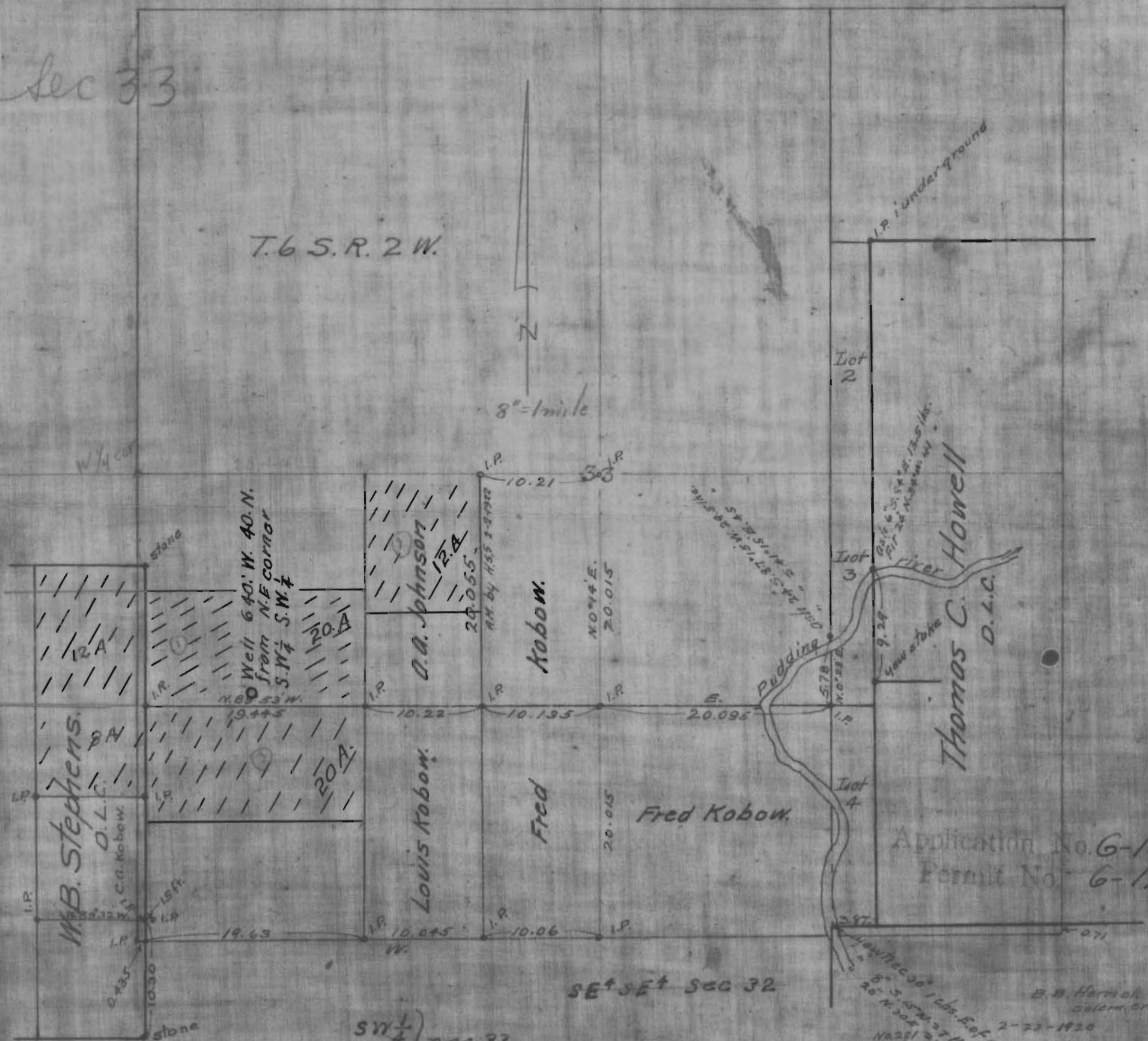
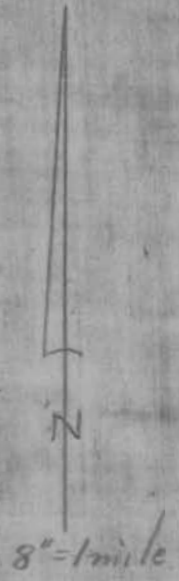


Sec 33

T.6 S. R. 2 W.



I.P. underground

Lot 2

Lot 3

Lot 4

Thomas C. Howell
D.L.C.

Application No. 6-1876
Permit No. 6-1719

SE 1/4 SE 1/4 SEC 32

SW 1/4 } SEC 33
SE 1/4 }

B.B. Herrick
surveyor
2-22-1920
No. 231 27 ft.
11-8-1919

Oct. 12-1923
B.B. Herrick

stone

stone

Well 640' W. 40' N.
from NE corner
S.W. 1/4 S.W. 1/4

W.B. Stephens.
D.L.C.
C.A. Kobow.

Louis Kobow.

O.A. Johnson
I.P.A.

Kobow.

Fred

Fred Kobow.

Pudding

river

New stone

N. 89° 53' W.
19.475

19.63

10.045

10.06

10.21

10.22

10.135

20.095

N. 0° 4' E.
20.015

20.015

9.29

5.78

N. 0° 23' E.

Dist. 6.35, 57.44, 13.5' less
Dist. 26' N. 39° W. 44'

Dist. 10.51, 13.5' less
Dist. 26' N. 39° W. 44'

257

071