

RECEIVED BY OWRD

MAP TO ACCOMPANY SUPPLEMENTAL GROUNDWATER APPLICATION

DEC 31 2013

WENDT FAMILY LLC

SALEM, OR

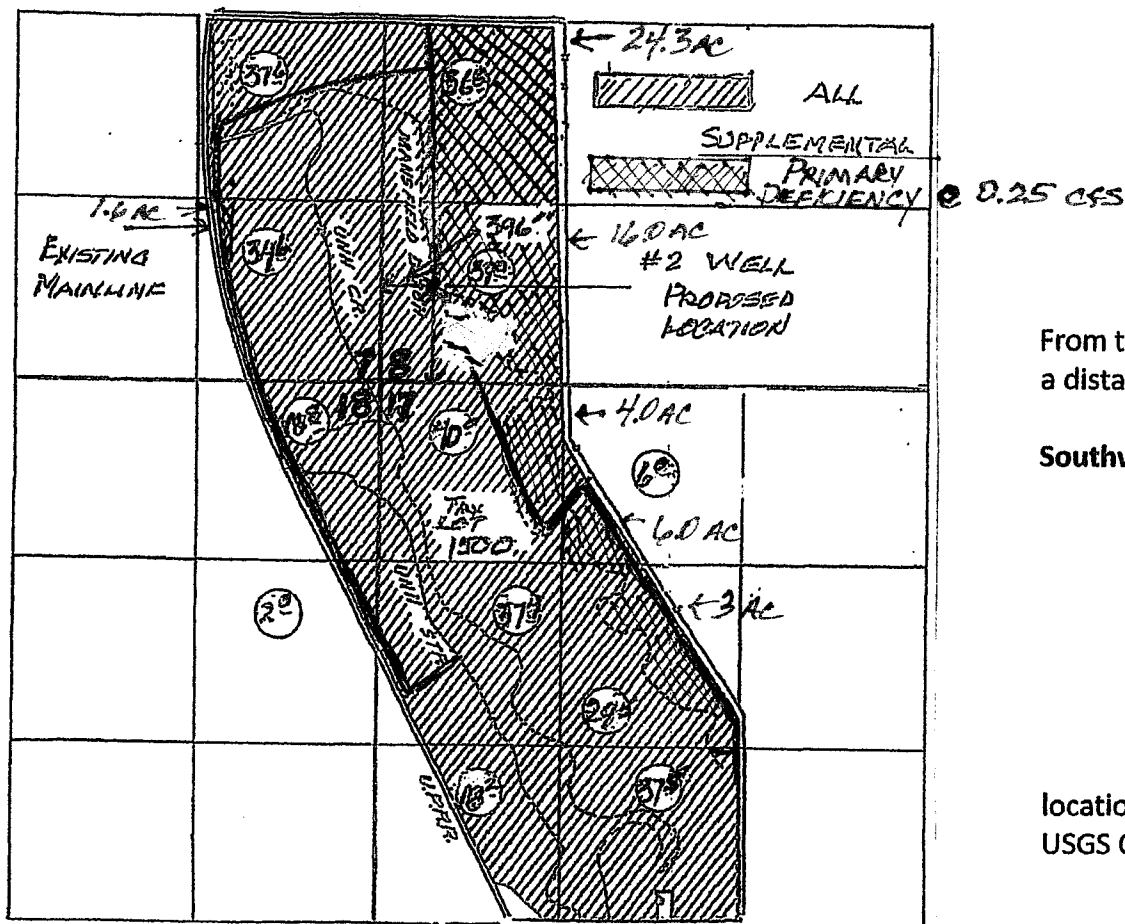
NORTH



T. 7 S. R. 39 E. W.M.

Scale: 1" = 1320'

Tax Lot 1500



Proposed well location:

From the Southwest corner of Sec. 8, T. 7 S., R. 39E., W.M., a distance of 764 feet, thence East, a distance of 396 feet

Southwest corner of Section 8 location: N. 44 57' 46.6"
W. 117 58' 21.4"

Well GPS location: N. 44 57' 52.1", W. 117 58' 15.8"

Location scaled from an approximate corner location of SE corner of Section 8, from the Haines USGS Quad map.