

THIS MAP WAS PREPARED FOR ASSESSMENT PURPOSE ONLY

SW 1/4 SEC. 2 T.2N. R.1W. W.M. MULTNOMAH COUNTY

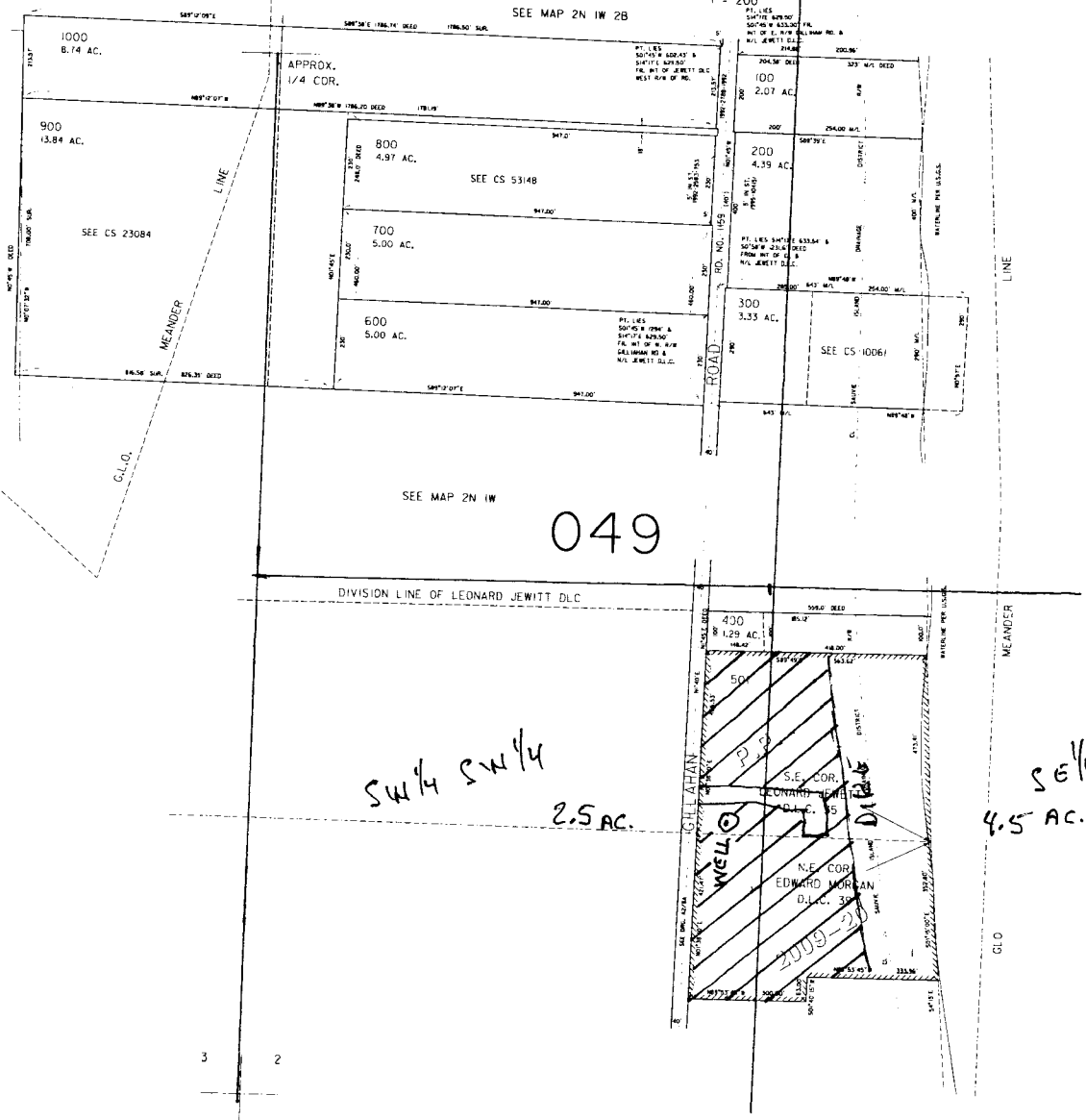
2N 1W 2C

1" = 200'

SEE MAP 2N 1W 2B

CANCELLED NO. 500

SEE MAP 2N 1W 3



SEE MAP 2N 1W

049

DIVISION LINE OF LEONARD JEWITT D.L.C.

SW 1/4 SW 1/4

2.5 AC.

SE 1/4 SW 1/4  
4.5 AC.

GILLAHAN

COLUMBIA RIVER

WATER RESOURCES DEPT  
SALMON CREEK WASHINGTON  
OREGON

FEB 11 2013

RECEIVED

3 2  
10 11

SEE MAP 2N 1W 11

WELL LOCATED 1150' E AND 700' NORTH FROM SW CORNER SECTION 2

SCALE = 1" = 200'  
2N 1W 2C

Handwritten signature or mark.