

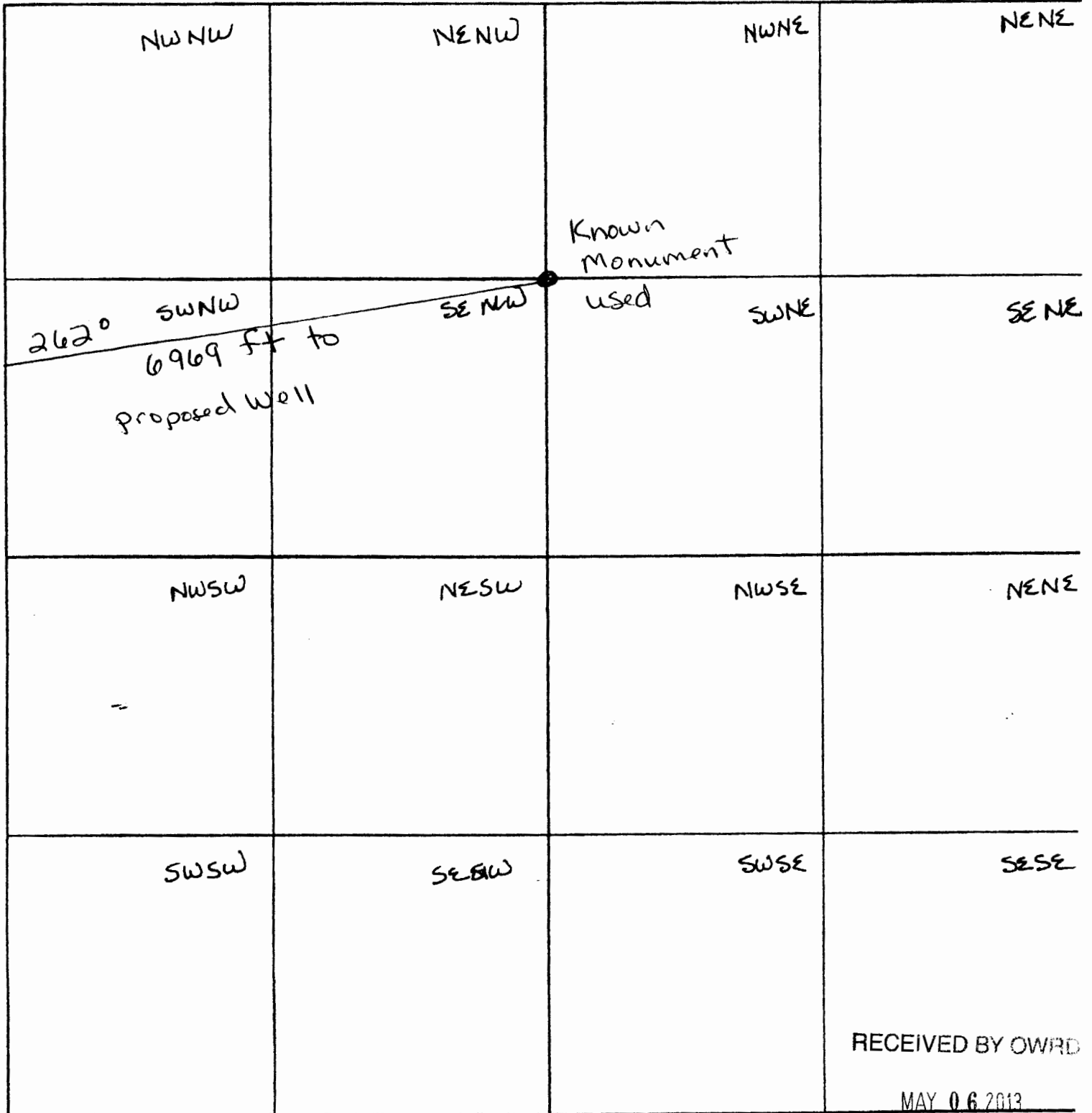
SECTION PLAT



Section 31 Township 19S Range 36E

County of Harney State of Oregon

NORTH



G-17669

4" = 1 mile

SALEM, OR



Oregon Water Resources Department
Water Rights by Type

MAY 06 2013

19 S 35 E 35

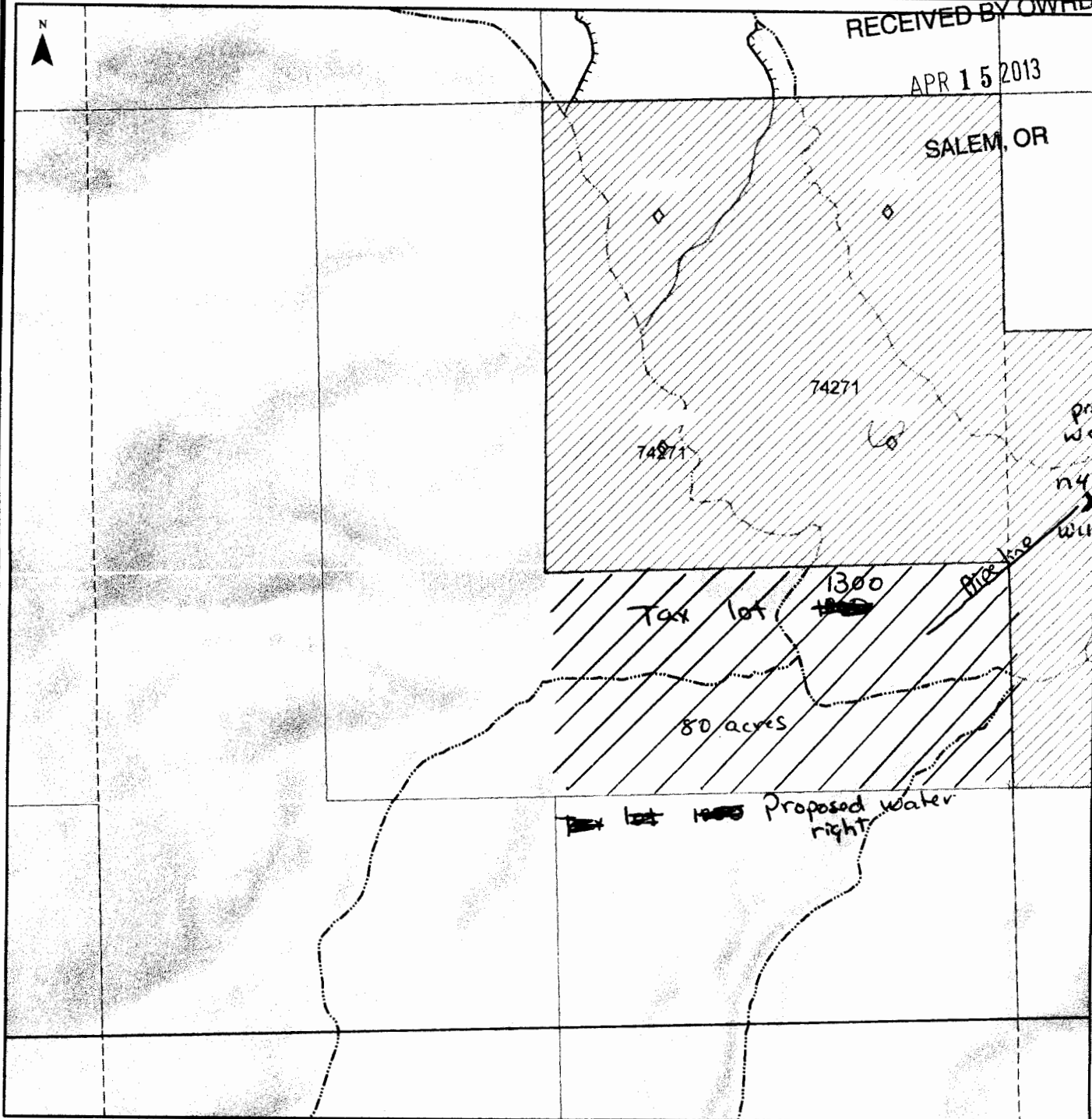
Map Date: July 17, 2012

SALEM, OR

RECEIVED BY OWRD

APR 15 2013

SALEM, OR



Proposed well site
n 40 s 74255
w 1/2 s 34507

0 1,000 Feet

Legend

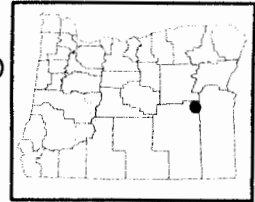
Index Map

For more information:
<http://www.wrd.state.or.us> and
<http://apps.wrd.state.or.us/apps/wr/wrinfo/>

This map is for informal purposes only.
It is not intended for legal, engineering or
surveying purposes. Municipal rights are
not included on this map.

Points of Diversion	Places of Use
● 75030	75030 Storage water
● 24883	24883 Surface water
● 24883	24883 Ground water

◇ Water Rights - Outline to be determined. (Applies to all colors)
Water right labels indicate certificate number or permit letter(s) and number. Municipality uses excluded.



Gc-17669



Oregon Water Resources Department

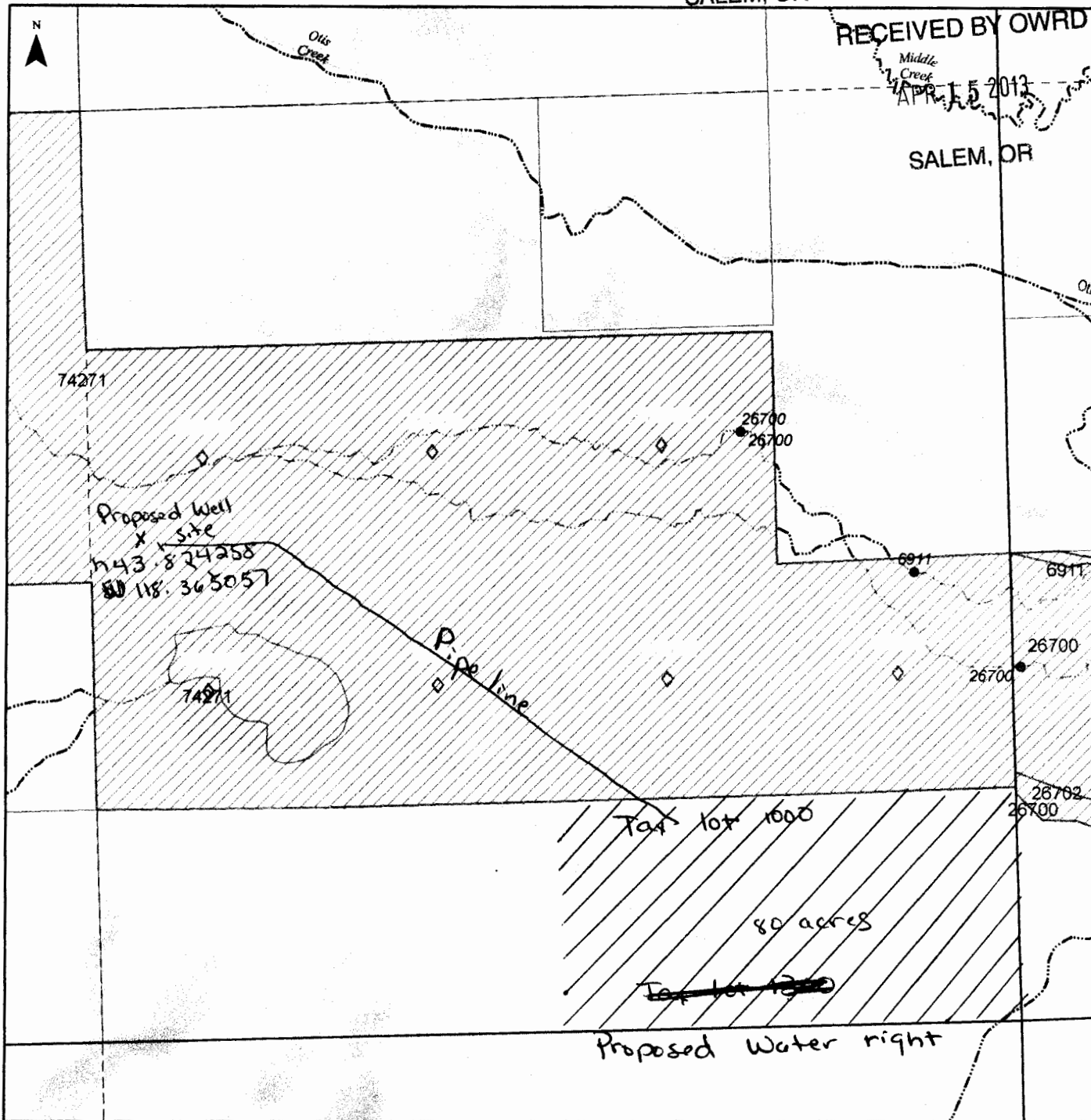
MAY 06 2013

19 S 35 E 36

Water Rights by Type

Map Date: July 17, 2012

SALEM, OR



0 1,000 Feet

Legend

Index Map

For more information:
<http://www.wrd.state.or.us> and
<http://apps.wrd.state.or.us/apps/wr/wrinfo/>

This map is for informal purposes only.
It is not intended for legal, engineering or
surveying purposes. Municipal rights are
not included on this map.

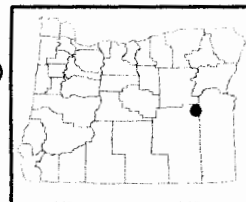
Points of Diversion Places of Use

- 75030
- 24883
- 24883

- 75030 Storage water
- 24883 Surface water
- 24883 Ground water

◇ Water Rights - Outline to be determined. (Applies to all colors)

Water right labels indicate certificate number or permit letter(s) and number. Municipality uses excluded.



Gr-17669

SECTION PLAT



Section 1 Township 20 Range 35

County of Harnes State of OR

NORTH

NW NW	NE NW	<p>Tax lot 80 acres 100 100</p>	
SW NW	SE NW	<p>Proposed water right SW NE</p> <p>RECEIVED BY OWRD APR 15 2013 SALEM, OR</p>	
NWSW	NESW	NWSE	NENE
SWSW	SESW	SWSE	SESE

RECEIVED BY OWRD
MAY 06 2013

G-17669

4" = 1 mile

SALEM, OR