

V
V

BOOTH - 10

Wells Loc:

- #1 - 350 feet N & 1300 feet west from the SE corner Section 6
- #2 - 350 feet N & 2600 feet west from the SE corner Section 6
- #3 - 600 feet South and 2600 feet West from the SE corner Section 6
- #4 - 1300 feet South and 2700 feet west from the SE corner Section 6
- #5 - 2000 feet South and 300 feet west from the

Well #6 - 3900 feet South and 3200 feet West from the SE corner of Section T41S, R12E, W1E.

RECEIVED

JUN 28 2001

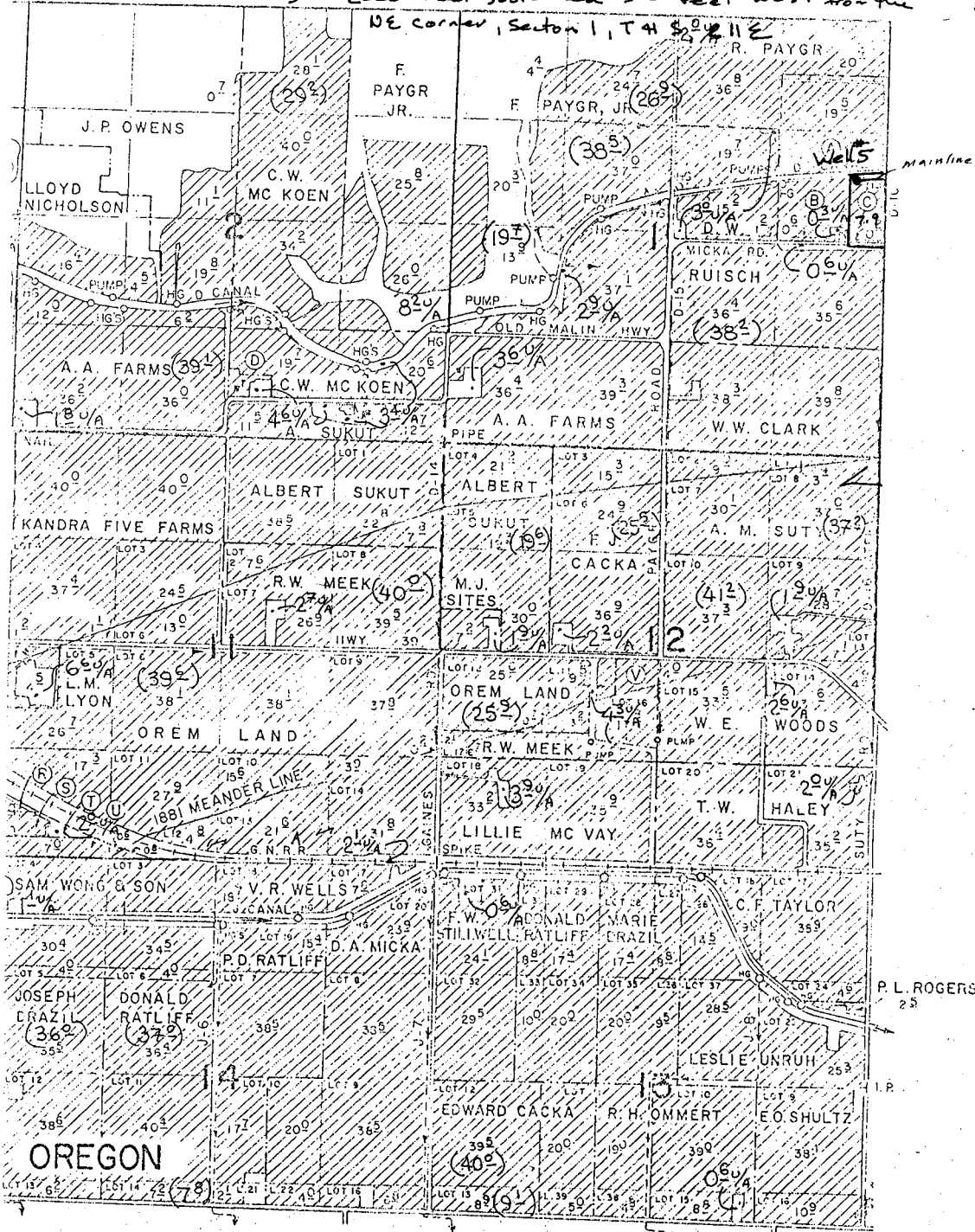
WATER RESOURCES DEPT. SALEM, OREGON

WATER RESOURCES DEPT. SALEM, OREGON

RECEIVED
FEB 14 2002

WATER RESOURCES DEPT. SALEM, OREGON

RECEIVED
FEB 14 2002



CALIFORNIA

Application No. 9,550
Permit No. G-15407

(34.5) Indicates corrected acreage for the area
 34.5 u/a Indicates unirrigated acreage under contract

T41S R12E

- © R. T. PARKER 8⁸
- © K. S. GENTRY 7⁰
- © RUBY GORDON 12³
- © A. J. PRESCOTT 1⁷
- © JOHN GUTHRIE 0³

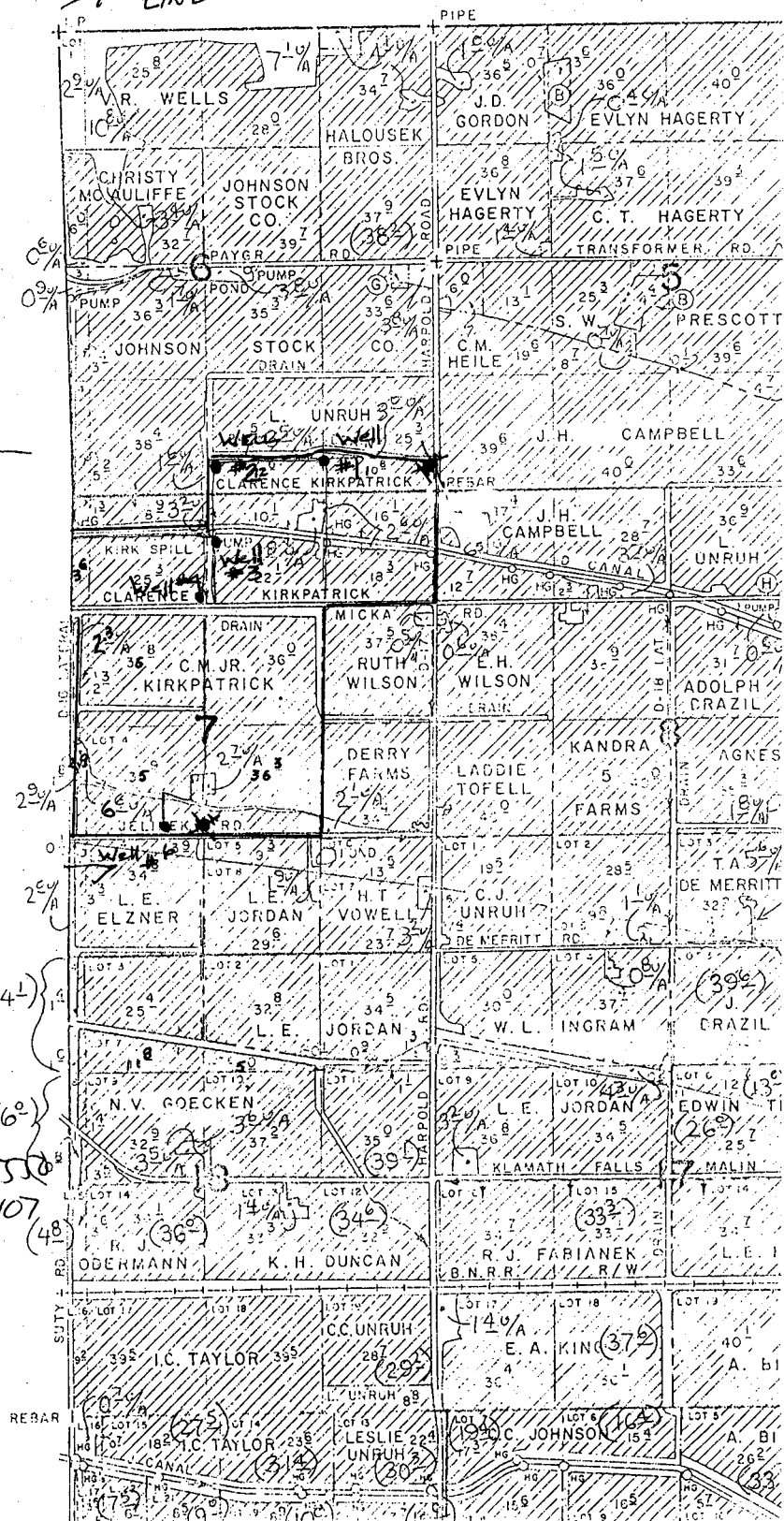
RECEIVED

JUN 28 2001

WATER RESOURCES DEPT.
SALEM, OREGON

MATCH
LINE

Mainlines



RECEIVED

FEB 14 2002

WATER RESOURCES DEPT.
SALEM, OREGON

Application No. 95550
Permit No. G. 95407