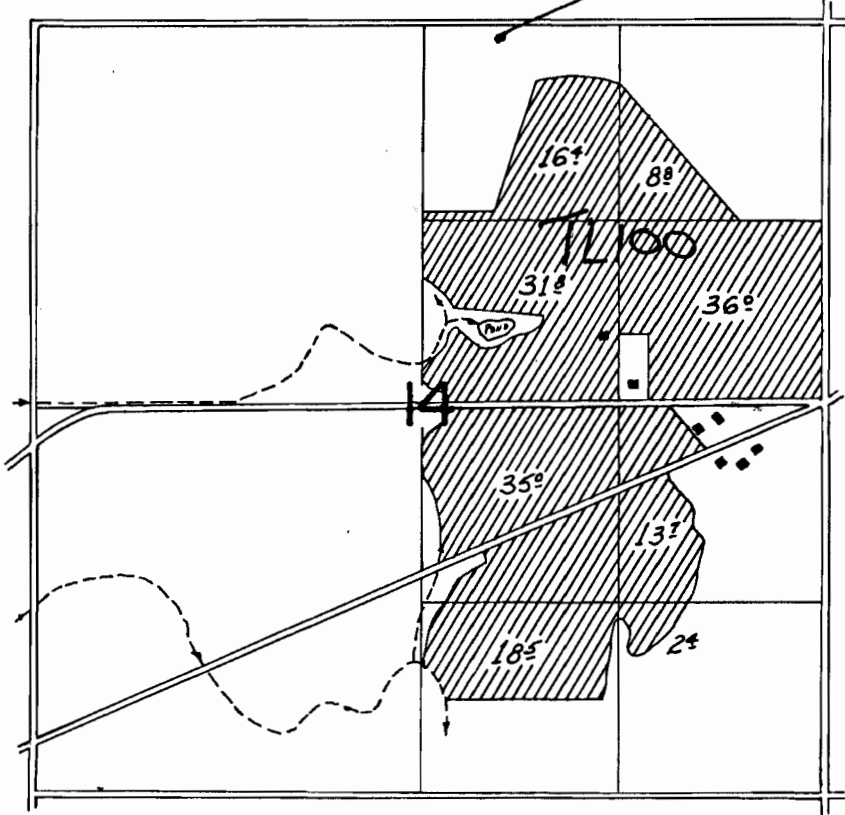


T 39 S, R 19 E, W.M.

well 1



well 1 2112 ft West and 132 ft South  
 of the NE quarter corner of Section  
 14, T39S, R19E, T100

Application No. ~~37002~~

~~\_\_\_\_\_~~

~~1" = 22'~~

1" = 1320'

RECEIVED BY OWRD

MAY 12 2014

SALEM, OR

G-7857