



**Well L111239 is a high capacity well that will irrigate 10 Acres of land and provide the site with potable water.**

**Well L111238 is a smaller well which will irrigate 5 Acres of Greenhouse Nursery and will also provide the site with potable water**

**Hash Lines indicate area of irrigation (field and greenhouses)**

G-17713

RECEIVED BY OWRD

AUG 15 2013

SALEM, OR



4-17-13



RECEIVED BY OWRD

AUG 15 2013

SALEM, OR




Clackamas County, OR  
Tax lots 1901 and 2601  
in section 14,  
Township 5 South,  
Range 1 West

Scale 1mi = 6in

Well #1: L111239  
Located in the SW 1/4 of the  
SE 1/4 of section 14. 715'  
North and 2255'  
West From the SE  
Corner of Section 14

Well #2: L111238  
Located in the SE 1/4 of  
The SE 1/4 of section 14.  
550' North and 1265' West  
From the SE corner of Section 14

 15 Acres Total  
Primary  
Irrigation  
Plus Potable  
Water

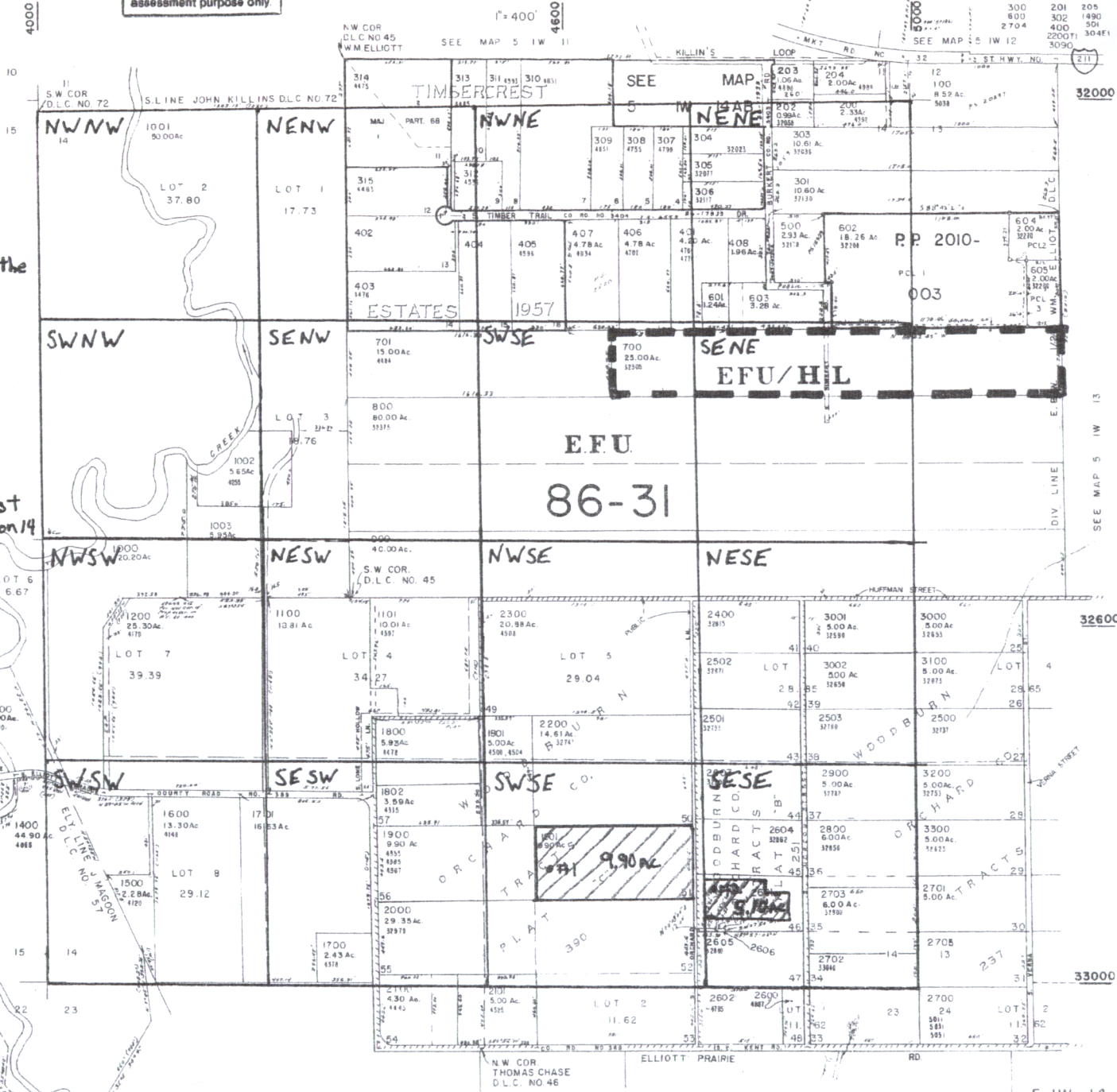
This map was prepared for  
assessment purpose only.

SECTION 14 T.5S. R.1W. W.M. D.L.C.'S 5 1W 14

CLACKAMAS COUNTY

WM. ELLIOTT NO. 45  
J. MAGOON NO. 57

Cancelled  
300 201 305  
800 302 190  
2704 400 501  
2200T 304E1  
3090



RECEIVED BY OWRD  
AUG 15 2013  
SALEM, OR

G-1745

SEE MAP 5 1W 23

5 1W 14  
BOOK 39