

RECEIVED

DEC 19 2013

WATER RESOURCES DEPT  
SALEM, OREGON

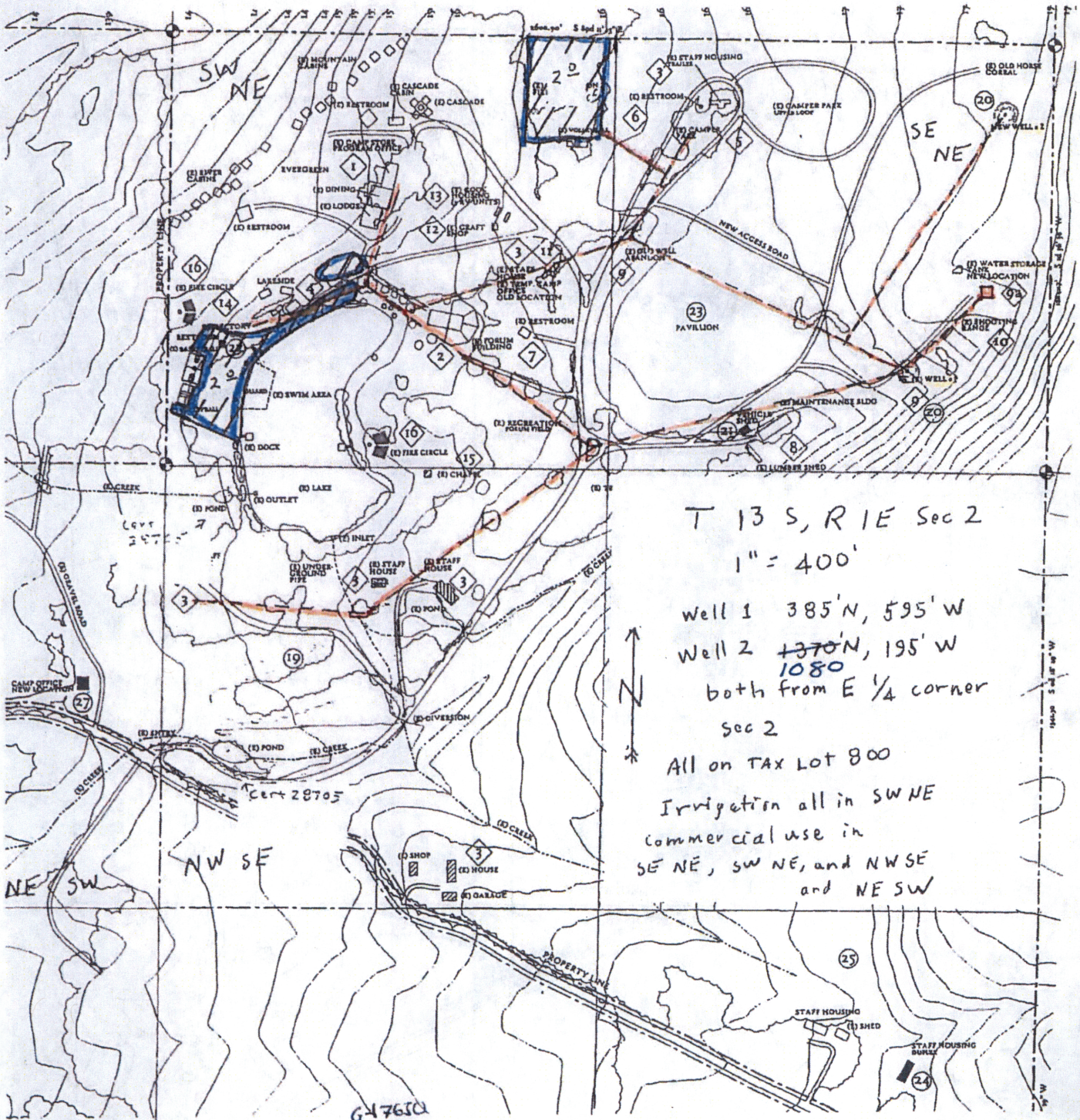
Camp Tadmor  
43943 McDowell Creek Dr.  
Lebanon, OR 97355

Approved as corrected  
by David R. B...  
12/19/13

RECEIVED

FEB 13 2013

WATER RESOURCES DEPT  
SALEM, OREGON



T 13 S, R 1 E Sec 2

1" = 400'

Well 1 385' N, 595' W

Well 2 1370' N, 195' W

both from E 1/4 corner

Sec 2

All on TAX LOT 800

Irrigation all in SW NE  
Commercial use in  
SE NE, SW NE, and NW SE  
and NE SW

PERMIT G-17305

G-17600



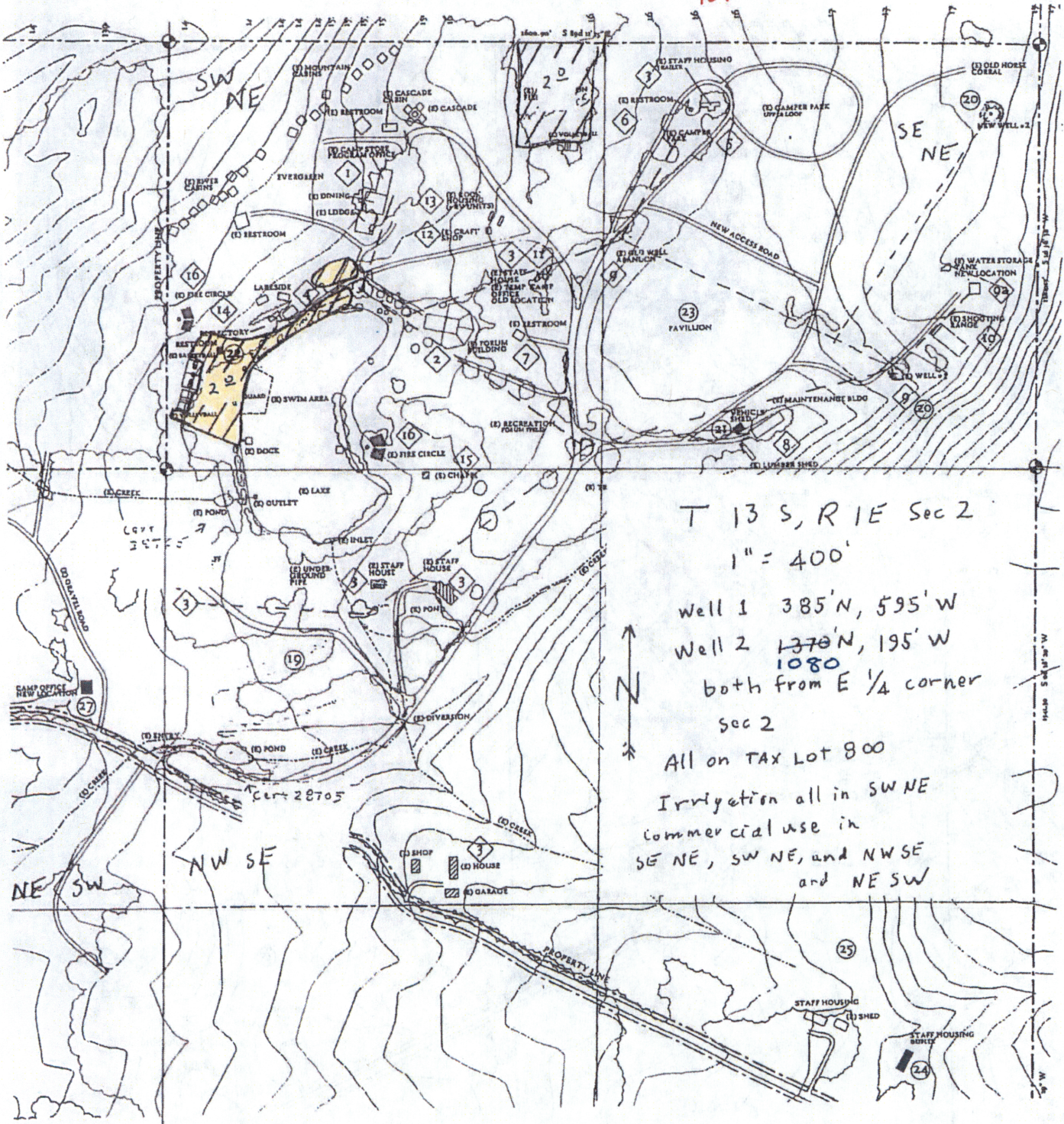
RECEIVED

DEC 19 2013

WATER RESOURCES DEPT  
SALEM, OREGON

Camp Tadmor  
43943 McDowell Creek Dr.  
Lebanon, OR 97355

Approved as collected  
by David R. [Signature]  
12/19/13



T 13 S, R 1 E Sec 2  
1" = 400'

Well 1 385' N, 595' W  
Well 2 1370' N, 195' W  
1080  
both from E 1/4 corner  
sec 2

All on TAX Lot 800  
Irrigation all in SW NE  
commercial use in  
SE NE, SW NE, and NWSE  
and NESW