

KERR
G-17843
PERMIT G-17309

05.08.14

TAX LOT 607
WELL ON TL 606
HOME ON TL 607

THIS MAP WAS PREPARED FOR
ASSESSMENT PURPOSE ONLY

SECTION 29 T26S R12W W.M.
COOS COUNTY

1" = 400'

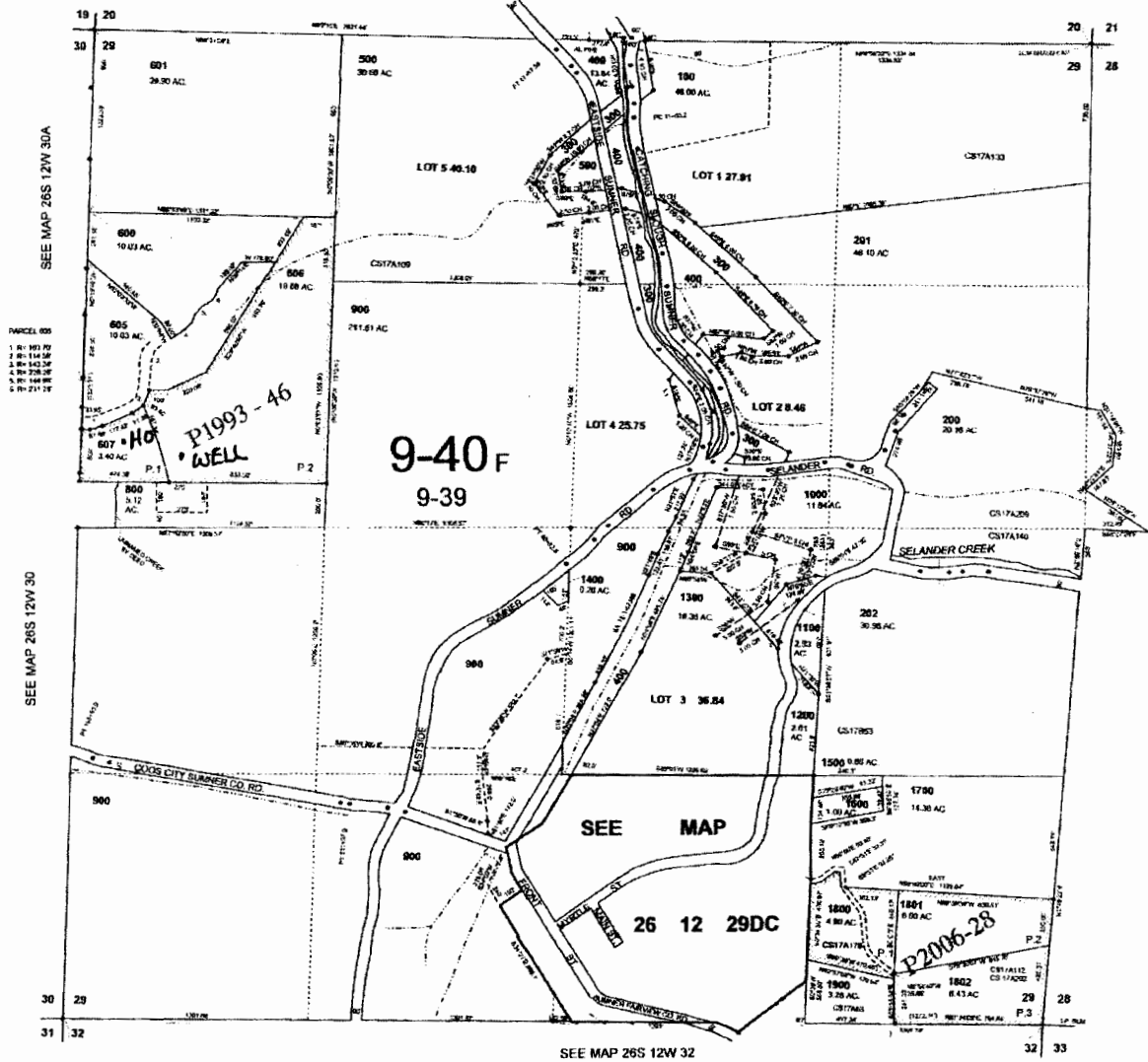
SEE MAP 26S 12W 20

SEE MAP 26S 12W 20D

26S 12W 29
& INDEX

CANCELLED NO.

602
603
604
700
703



SEE MAP 26S 12W 30A

PARCEL NO
1. 901 901 AC
2. 902 114.52 AC
3. 903 208.54 AC
4. 904 208.54 AC
5. 905 211.48 AC

SEE MAP 26S 12W 30

SEE MAP 26S 12W 28

SEE MAP 26S 12W 32

11-1-2006

House - 2310' S., & 400 FT. EAST OF
NW CORNER Sec. 29

Well - 2400 FT. S., & 640 FT. EAST
OF NW CORNER Sec. 29

26S 12W 29
& INDEX

RECEIVED

MAY 8 2014

WATER RESOURCES DEPT
SALEM, OREGON

M. LEWIS