

1,320 660 0 1,320 2,640
 Feet

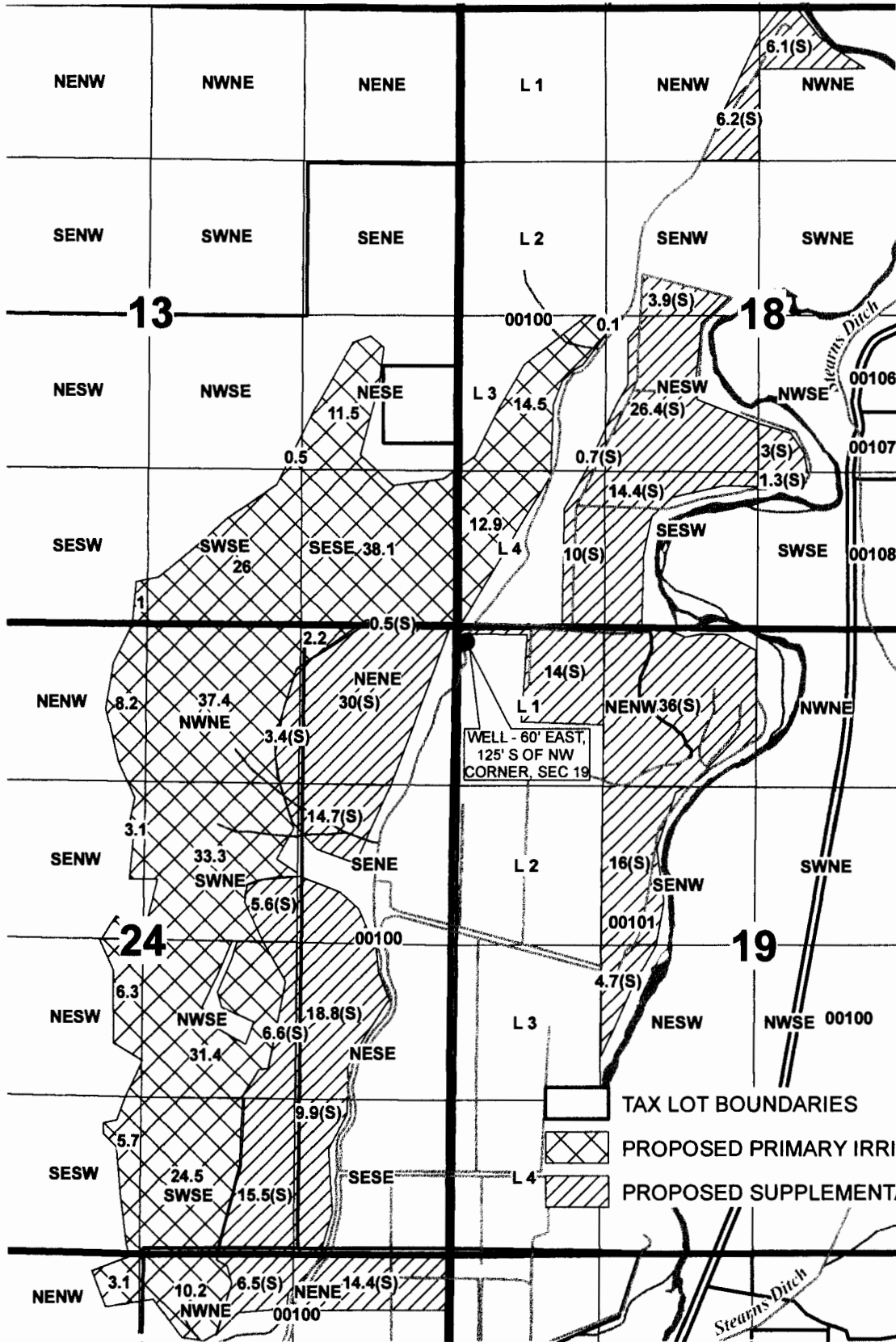


CROOK COUNTY, OREGON

1" = 1,320'

T 15 S, R 15 E, WM




T 15 S, R 16 E, WM



RECEIVED BY OWRD

SEP 15 2014

SALEM, OR

-  TAX LOT BOUNDARIES
-  PROPOSED PRIMARY IRRIGATION BY QQ
-  PROPOSED SUPPLEMENTAL IRRIGATION POU BY QQ



**WHITE DEER RANCH
 WATER RIGHT "TO" MAP**

PERMIT AMENDMENT FOR G-12895

This map is not intended to provide legal dimensions or locations of property ownership lines.
 MAY 29, 2014

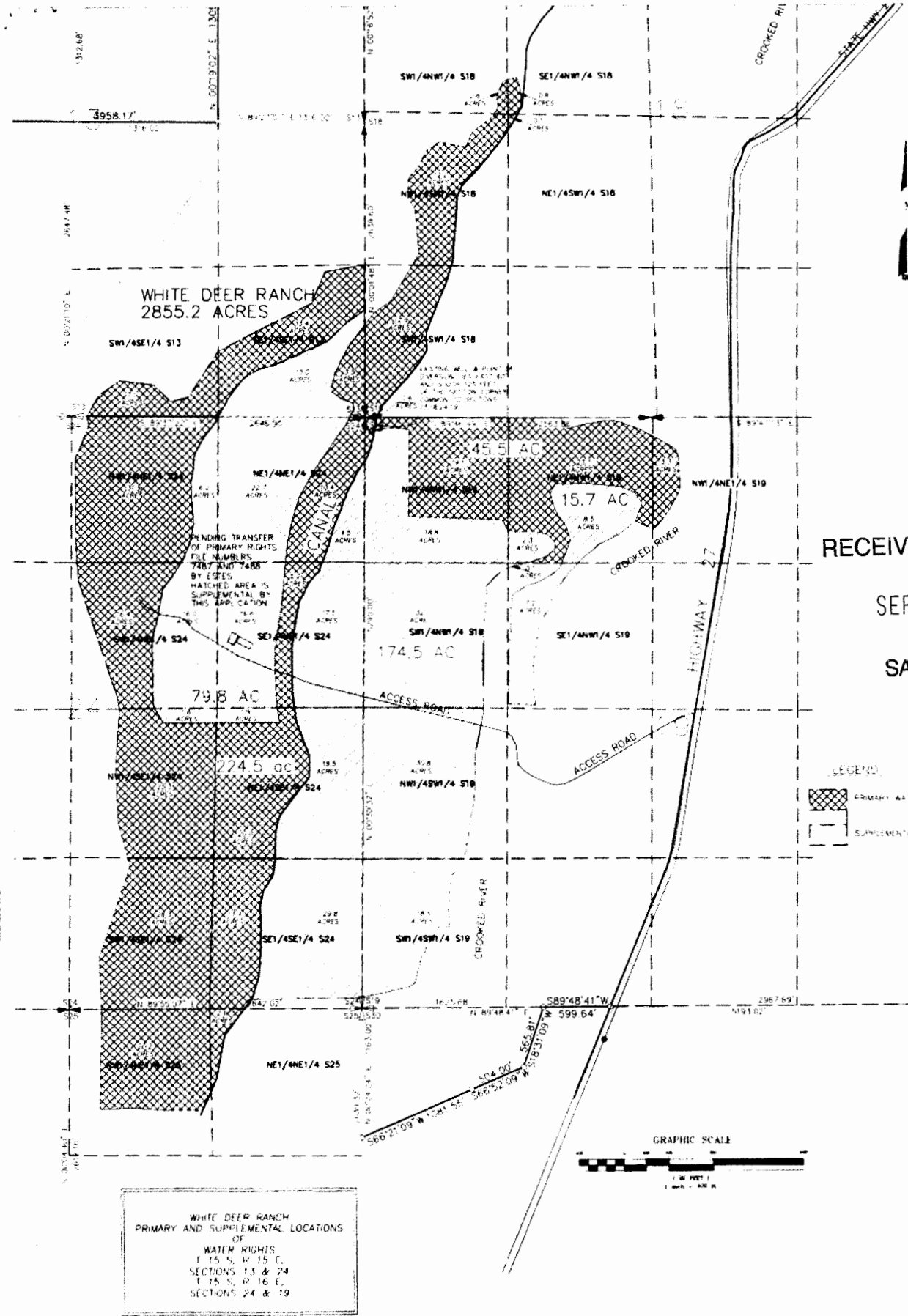
WATER RIGHT SERVICES, LLC

PO BOX 1830, BEND, OR 97709

WWW.OREGONWATER.US 541-389-2837

johnshort@usa.com

CCB # 197121



RECEIVED BY OWRD
 SEP 15 2014
 SALEM, OR

WHITE DEER RANCH
 PRIMARY AND SUPPLEMENTAL LOCATIONS
 OF
 WATER RIGHTS
 T. 15 S., R. 15 E.,
 SECTIONS 15 & 24
 T. 15 S., R. 16 E.,
 SECTIONS 24 & 29

DATE	NO.	REVISION	BY
1/1			



WHITE DEER RANCH **FILE NO. G-14150**
 WATER RIGHTS APPLICATION NO. G-14150
PRIMARY & SUPPLEMENTAL LOCATIONS
 FROM EXISTING WELL AS DIVERSION POINT



100
