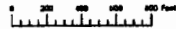
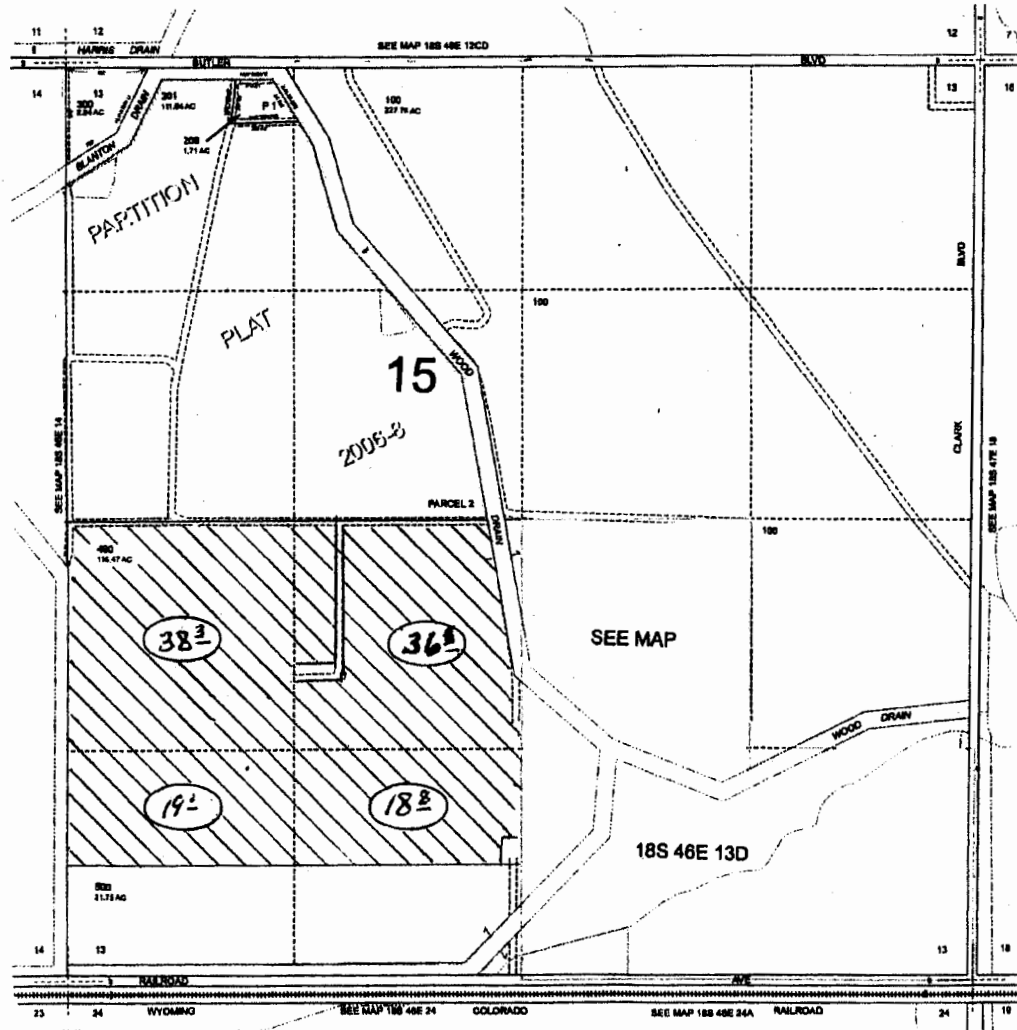


THIS MAP WAS PREPARED FOR
ASSESSMENT PURPOSE ONLY



SECTION 13 T.18S. R.46E. W.M.
MALHEUR COUNTY

18S46E13
& INDEX



1" = 1000' approx

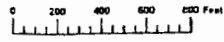
Revised: MA
10/01/2013
& INDEX
18S46E13

G-17703

RECEIVED
MAR 05 2014

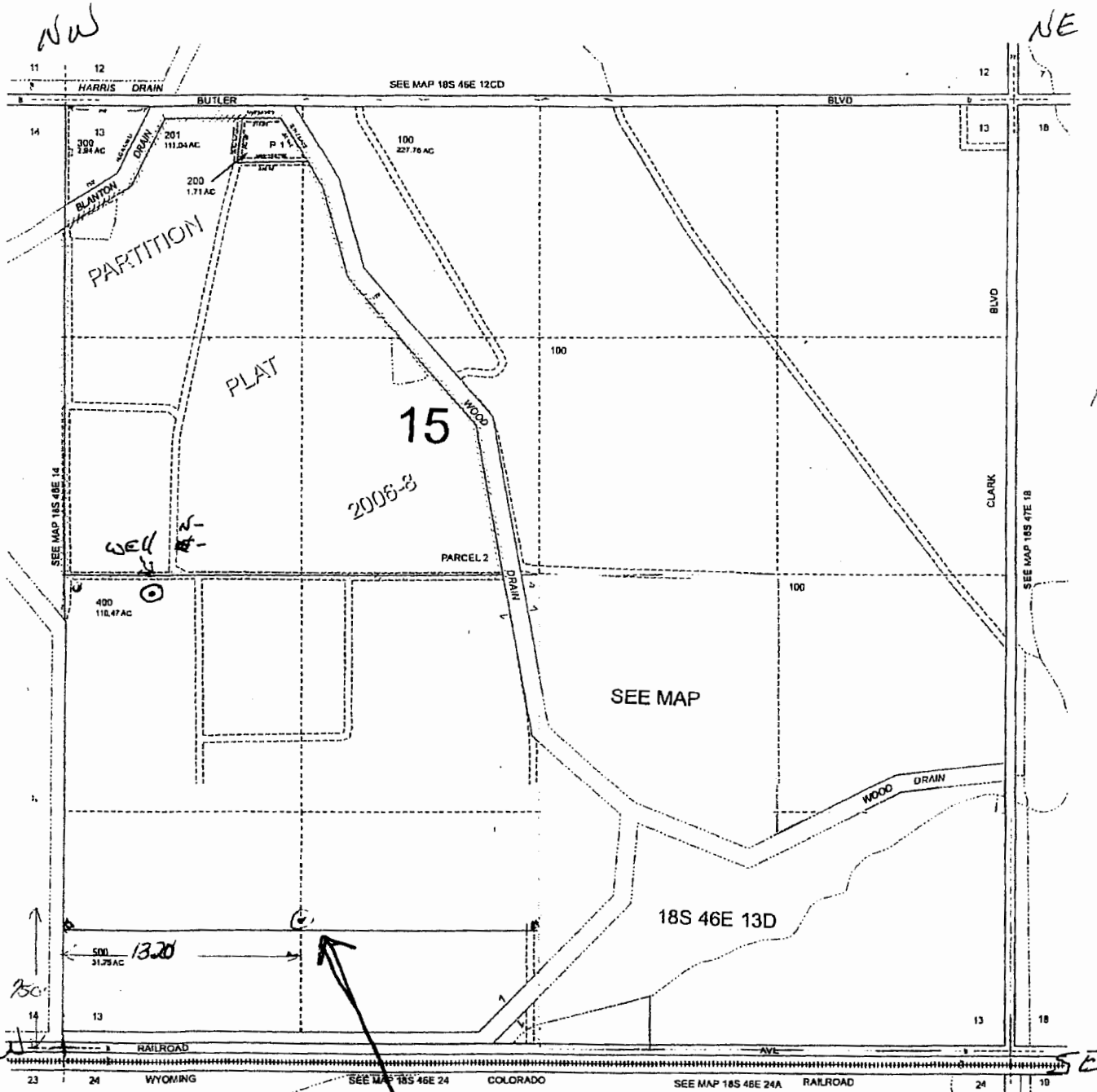
WATER RESOURCES DEPT
SALEM, OREGON

THIS MAP WAS PREPARED FOR
ASSESSMENT PURPOSE ONLY



SECTION 13 T.18S. R.46E. W.M.
MALHEUR COUNTY
1" = 400'

18S46E13
& INDEX



RECEIVED

MAR 05 2014

WATER RESOURCES DEPT
SALEM, OREGON

110' from each
mark

G-17703

SW CORNER
of SEC. 13

SW

Proposed well site.

Revised: MA
10/01/2013

& INDEX
18S46E13