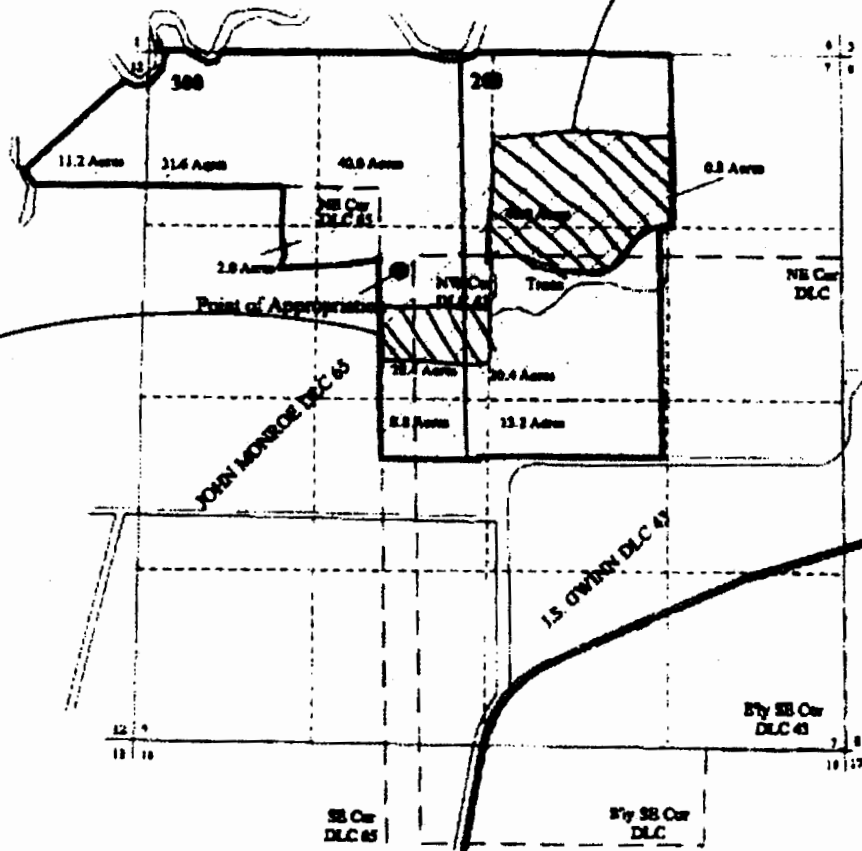


T5S R4W W.W.M.

24.0
ACRES

IRRIGATED
GROUND

5.0
ACRES



POINT OF APPROPRIATION
IS APPROXIMATELY 650 FEET
SOUTH AND 165 FEET EAST OF
NE CORNER D.C. 65

THIS MAP WAS PREPARED
FOR THE PURPOSE OF
IDENTIFYING THE LOCATIONS
PRESENTED ON AN APPLICATION
FOR A PERMIT TO USE GROUND
WATER AND IS NOT INTENDED TO
PROVIDE LEGAL DIMENSIONS OR
LOCATION OF PROPERTY
OWNERSHIP LINES.



APPROXIMATE SCALE IN FEET



OCT 2014

RECEIVED BY OWRD

DEC 16 2014

SALEM, OR