

**POA LOCATION DESCRIPTIONS**

**Well 1 (from Permit)**  
SW1/4 NE1/4, Section 26, T3N, R23E (W.M.)  
1,950 feet South and 2,320 feet West from the NE corner of Section 26.

**Well 2 (from Permit)**  
SE1/4 NE1/4, Section 26, T3N, R23E (W.M.)  
1,950 feet South and 1,060 feet West from the NE corner of Section 26.

**Well 3 (from Permit)**  
NW1/4 NW1/4, Section 19, T3N, R24E (W.M.)  
1,110 feet South and 265 feet East from the NW corner of Section 19.

**Well 4 (from Permit)**  
NW1/4 NW1/4, Section 19, T3N, R24E (W.M.)  
770 feet South and 320 feet East from the NW corner of Section 19.

**Well 1 M 50791**  
1,830 feet South and 2,555 feet West from the NE corner of Section 26, T3N, R23E (W.M.)

**Well 2 M 50828**  
1,845 feet South and 990 feet West from the NE corner of Section 26, T3N, R23E (W.M.)

**Well 3 M 50783**  
1,955 feet North and 510 feet West from the SE corner of Section 24, T3N, R23E (W.M.)

**Well 4 M 50821**  
1,020 feet South and 80 feet West from the NE corner of Section 24, T3N, R23E (W.M.)

**Well 5 M 51237**  
3,075 feet South and 2,600 feet West from the NE corner of Section 27, T3N, R23E (W.M.)

**Well 6 M 51371**  
1,800 feet South and 2,575 feet West from the NE corner of Section 26, T3N, R23E (W.M.)

**Application for a Permit Amendment**  
**Corrected Locations and Additional Points of Appropriation**  
**Application in the Name of Threemile Canyon Farms**  
Application G-15210, Permit G-15144  
Township 3 North, Range 23 & 24 East (W.M.)

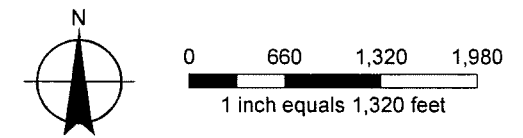
- LEGEND**
- Points of Appropriation (POAs)**
- Locations of Proposed POAs from Permit
  - Corrected Locations of Proposed POAs
  - △ Proposed Additional POAs
- All Other Features**
- ▨ Place of Use (POU)
  - ▭ Government Lots
  - Tax Lots
  - Streets
  - ~ Watercourses

**RECEIVED**

SEP 25 2013

WATER RESOURCES DEPT  
SALEM, OREGON

**DISCLAIMER**  
This map was prepared for the purpose of identifying the location of a water right only and it is not intended to provide legal dimensions or location of property ownership lines.



1011666

**MAP NOTES:**  
Date: September 23, 2013  
Data Sources: OWRD, OGIC, ESRI

