

RECEIVED

AUG 18 2014

WATER RESOURCES DEPT
SALEM, OREGON

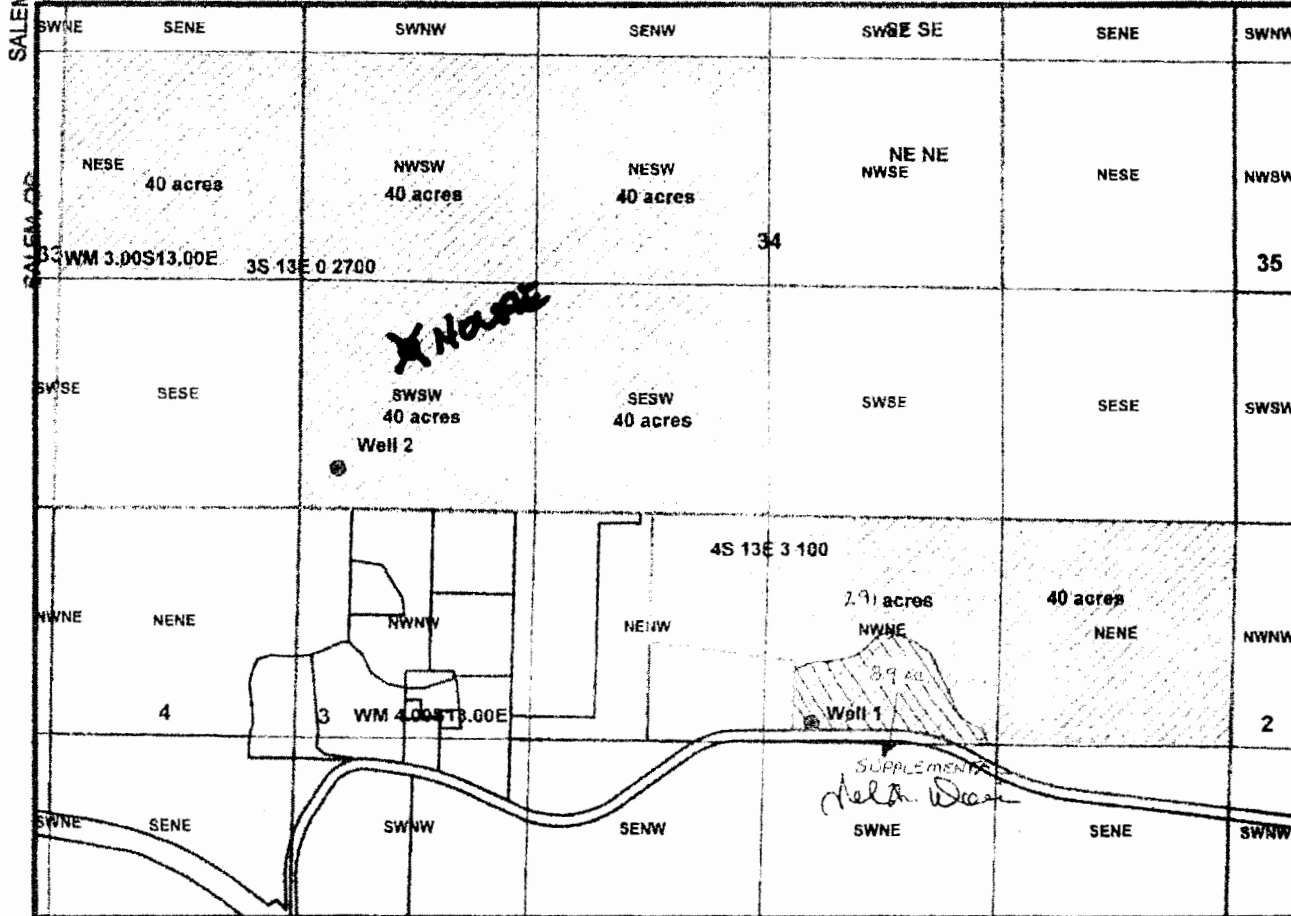
Davis GW Application Map
3S 13E 0 2700, 3S 13E 33 100, 4S 13E 3 100

RECEIVED BY OWRD

APR 08 2014

APR 26 2014

SALEM, OR



Well 1: 2,405 ft west and 1,128 ft south of the Northeast Corner, Section 3, being in the NW NE Section 3, T4S R13E WM. Well 2: 5,068 ft west and 227 ft north of the Southeast Corner, Section 34, being in the SW SW Section 34, T3S R13E WM. Scale: 1" = 800'

John W. Davis - CHAIRMAN APPROVED