

T 22S, R 20E

Authorized POA Gravel Pit 2  
Well does not exist

Approved, Not Changing

Taxlot 500

SECTION 4

SECTION 3

NWNW

NENW

NWNE

NENE

SECTION 9

SECTION 10

Taxlot 803

Taxlot 500

897'

Proposed POA Gravel Pit 2

Taxlot 500

9.20 acres

5.96 acres

1.99 ac

1997'

Power Ditch

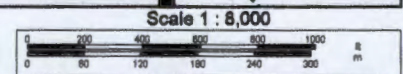
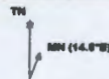
SALEM, OR

OCT 06 2014

Data use subject to license.

© DeLorme. Topo North America™ 9.

www.delorme.com



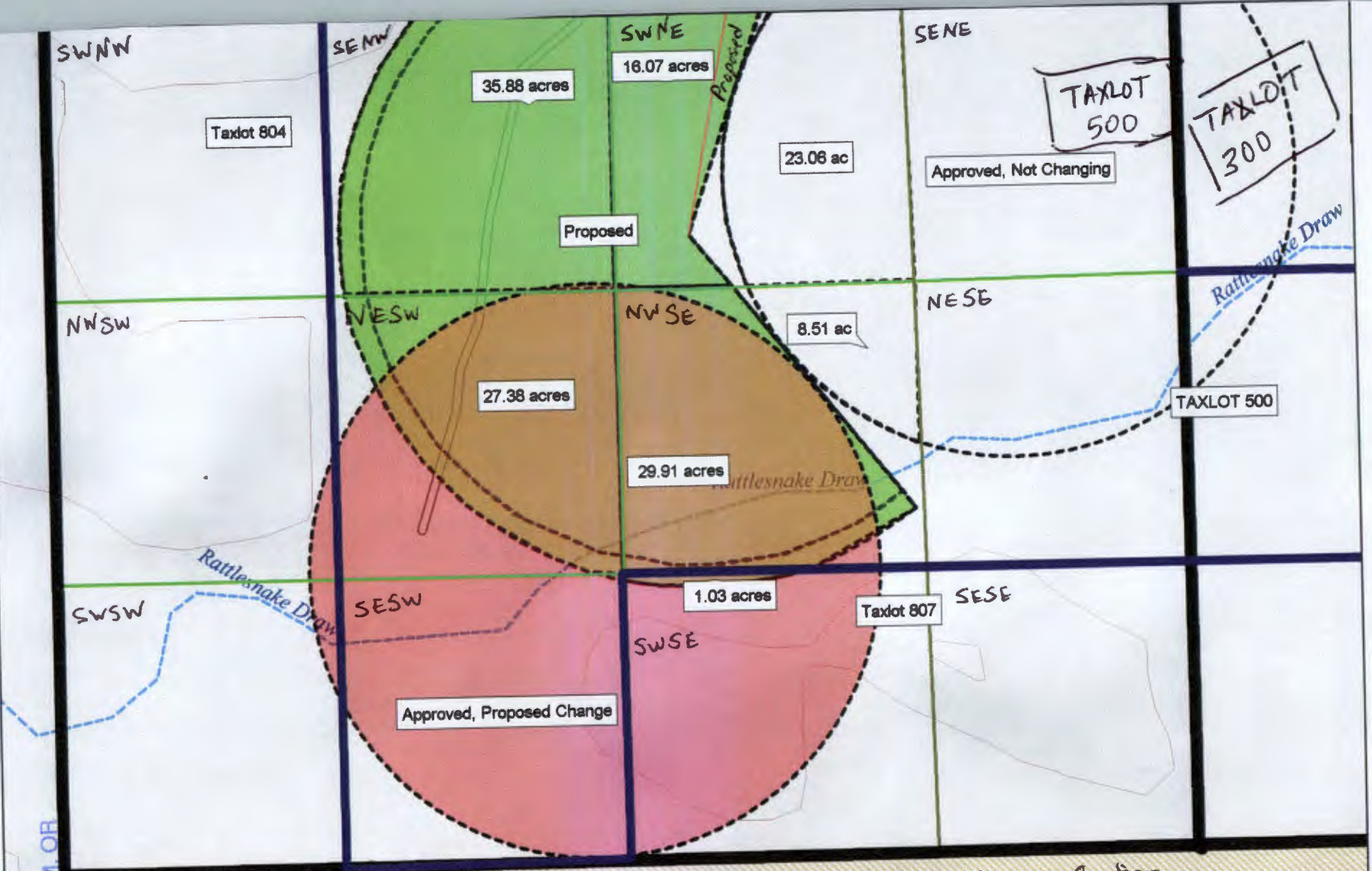
Scale 1 : 8,000  
1" = 666.7 ft Data Zoom 14-0



RECEIVED BY OWRD

OCT 06 2014

SALEM, OR



Permit G-17122  
 Priority Date 12-19-2011

Black Line - Section  
 Purple line - TAXLOT  
 Pink Hatching - Approved POW to Change  
 Brown Hatching - Approved POW No Change  
 Green Hatching - Proposed POW

BOTTOM HALF OF MAP

