

THIS MAP WAS PREPARED FOR ASSESSMENT PURPOSE ONLY

SECTION 19 T5S R4W W.M.
YAMHILL COUNTY

5 4 19

1" = 400'

SEE MAP 5 4 18

CANCELLED
2000 REF

20
RECEIVED

JUL 0 1 2014

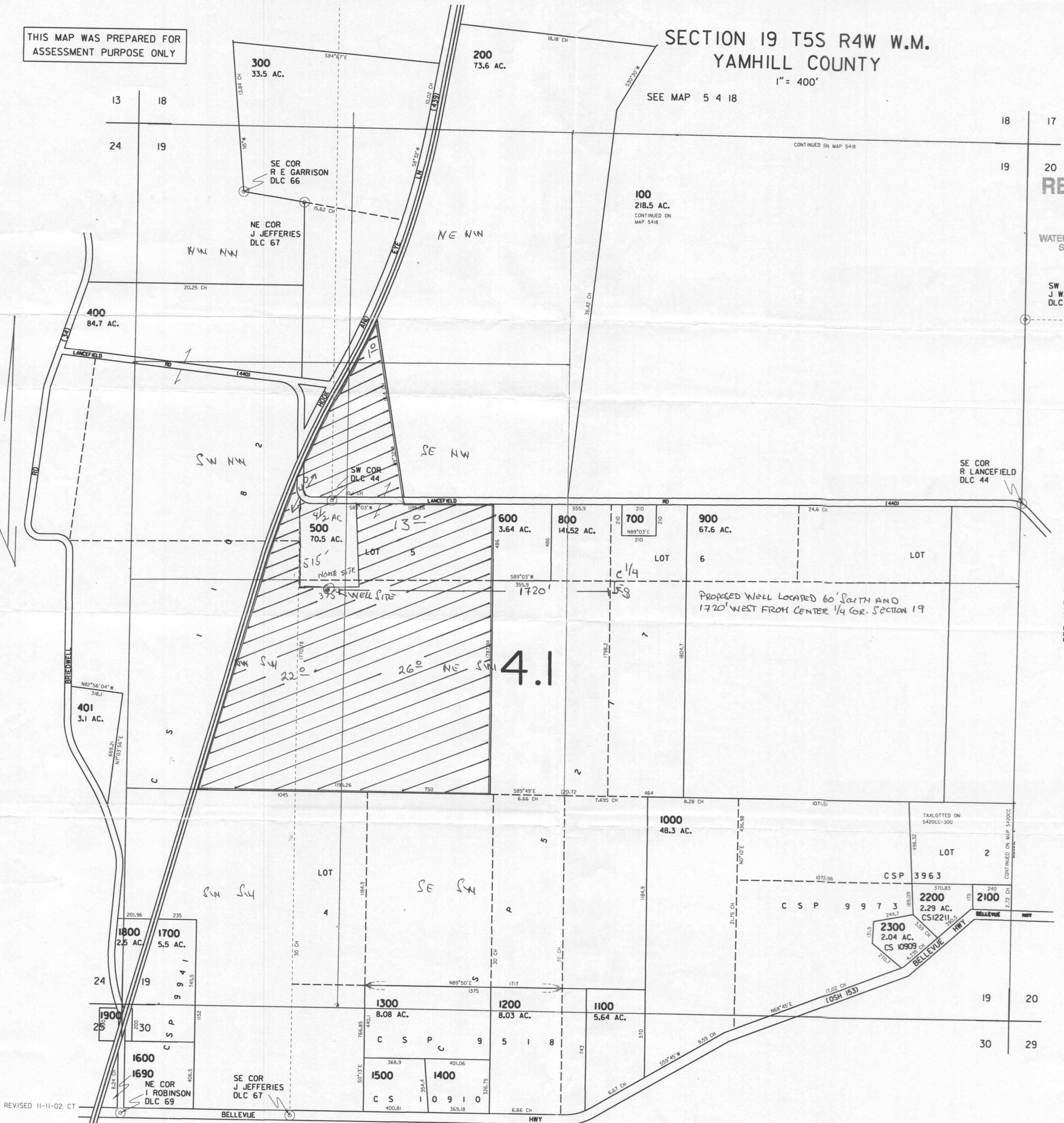
WATER RESOURCES DEPT
SALEM, OREGON

SW COR
J WALLING
DLC 42

SE COR
R LANCEFIELD
DLC 44

SEE MAP 5 5 24

SEE MAP 5 4 20



REVISED 11-11-02 CT

SEE MAP 5 4 30

5 4 19

G-17884

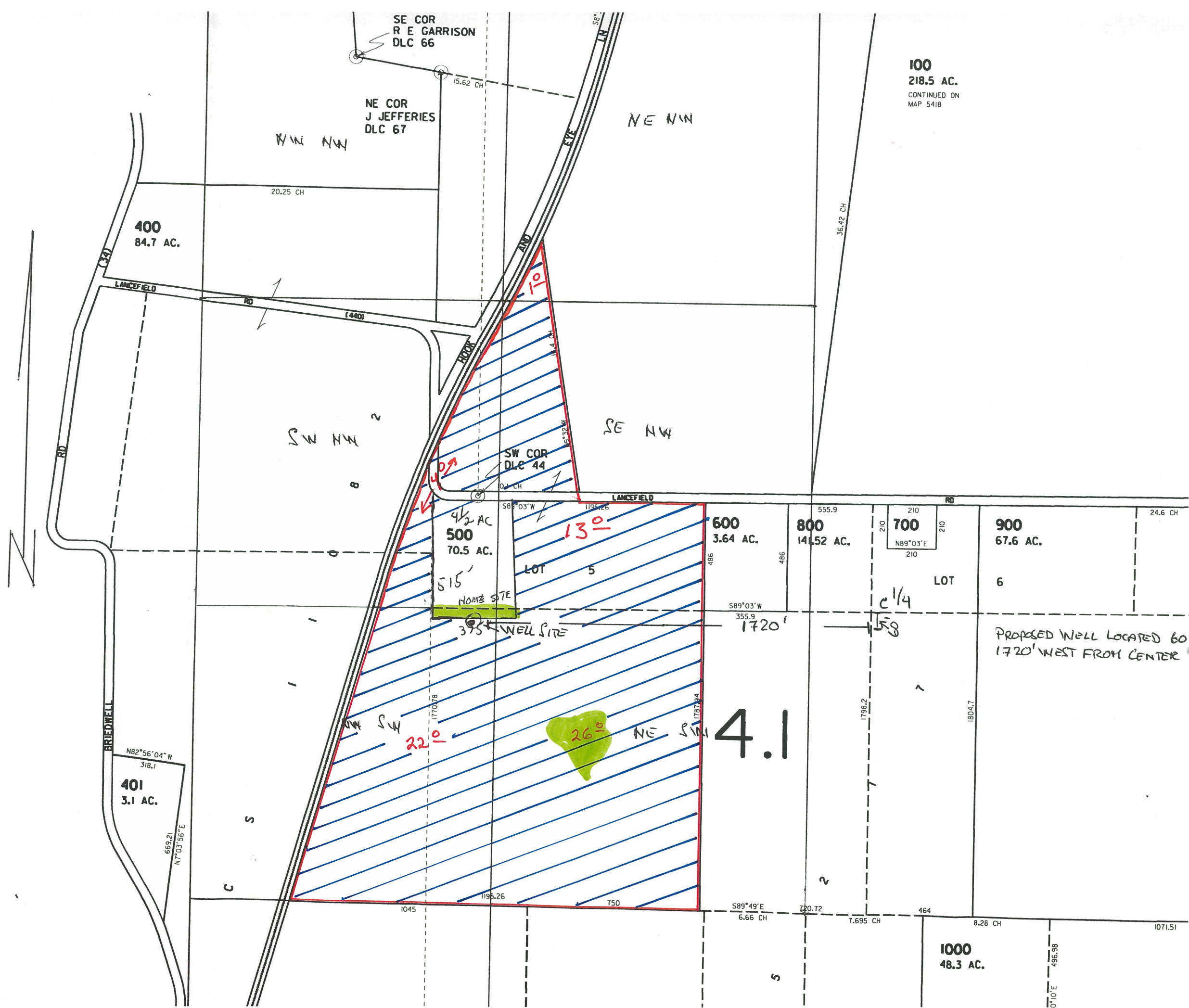
RECEIVED

MAR 17 2015

WATER RESOURCES DEPT
SALEM, OREGON

SEE MAP 5 5 24

2nd - lake in size
not as big as shown
on previous estimates.
-Green-Primary



100
218.5 AC.
CONTINUED ON
MAP 5418

PROPOSED WELL LOCATED 60
1720' WEST FROM CENTER